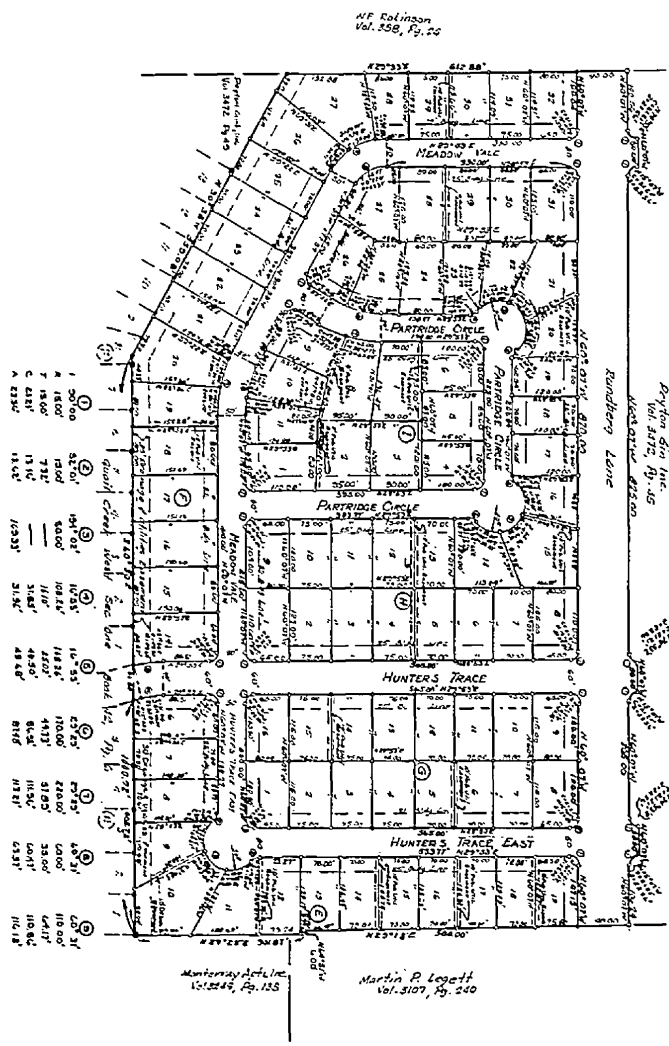


Aug 20-69 Re-CH-A 9352 7.50



SCALE - 1"=100'



**LEGEND**

- ROAD EASEMENT
- CONCRETE PAVEMENT EASEMENT
- CONCRETE PAVEMENT ROAD

# QUAIL CREEK WEST

## SECTION THREE

PREPARED BY  
**HALE AND ASSOCIATES, INC.**  
ENGINEERS PLANNERS  
AUSTIN, TEXAS

State of Texas  
County of Travis  
Know all men by these presents that I, Sidney L. Darden, County Clerk of Travis County, Texas, do hereby certify that the within and foregoing plat of subdivision of land and of the streets and alleys therein shown as being approved by the Board of Commissioners of Travis County, Texas, on the 10th day of August, 1969, and that the same are in accordance with the official records of said County, Texas, and that the same are in accordance with the public use of the streets and alleys therein shown and do hereby declare to be the true and correct copy of the original plat of subdivision of land and of the streets and alleys therein shown as being approved by the Board of Commissioners of Travis County, Texas, on the 10th day of August, 1969.

Sidney L. Darden, County Clerk of Travis County, Texas

State of Texas  
County of Travis  
Before me, the undersigned authority, on this day personally appeared Sidney L. Darden, President of the Board of Commissioners of Travis County, Texas, known to me to be the person whose name is subscribed to the foregoing instrument, and acknowledged to me that he executed the same for the purposes and considerations therein expressed, and in the capacity therein stated.

Notary Public for Travis County, Texas

Approved for acceptance: By Sidney L. Darden Mayor, Travis County, Texas, August 10, 1969.

Accepted and authorized for record: By the Planning Commission of Travis County, Texas, this 10th day of August, 1969.

Secretary

Filed for Record this 20th day of August 1969 and subject P.M. Miss Emily Limberg, Clerk County Court, Travis County, Texas.

Deputy

The State of Texas  
County of Travis  
I, Miss Emily Limberg, Clerk of the County Court, do hereby certify that the within and foregoing plat of subdivision of land and of the streets and alleys therein shown as being approved by the Board of Commissioners of Travis County, Texas, on the 10th day of August, 1969, and that the same are in accordance with the official records of said County, Texas, and that the same are in accordance with the public use of the streets and alleys therein shown and do hereby declare to be the true and correct copy of the original plat of subdivision of land and of the streets and alleys therein shown as being approved by the Board of Commissioners of Travis County, Texas, on the 10th day of August, 1969.

Miss Emily Limberg, Clerk County Court, Travis County, Texas

This is to certify that the within City Code Chapter 53-27 of 1957 has been complied with.

Secretary

