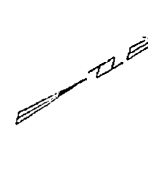


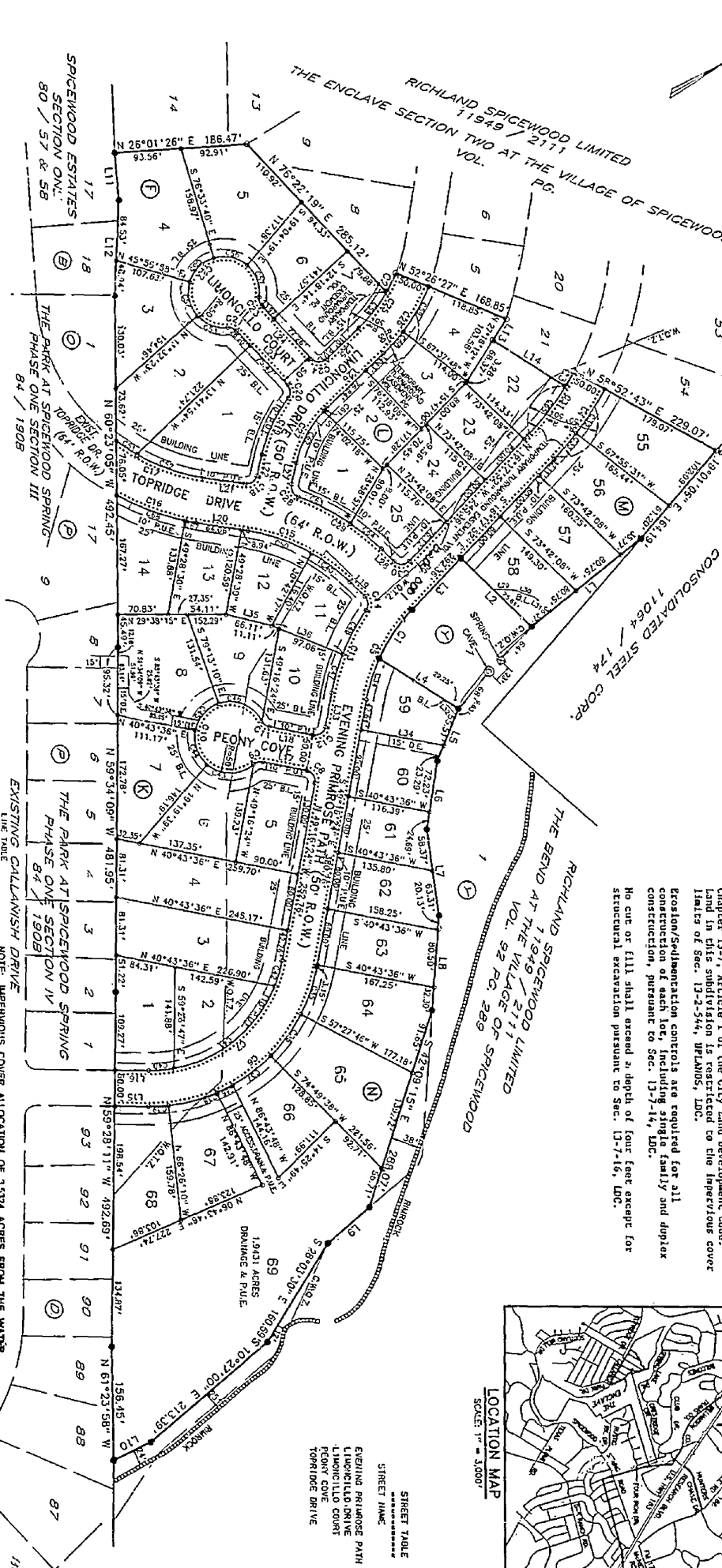
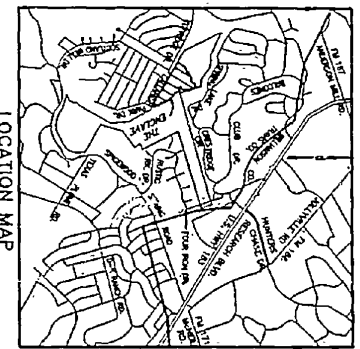
THE ENCLAVE SECTION ONE AT THE VILLAGES OF SPICEWOOD



WATERSHED STATUS- This subdivision is located in the Bull Creek watershed, is classified as water supply Suburban I and shall be developed, constructed, and maintained in conformance with the terms and conditions of Chapter 13-2, Article V and Chapter 13-7, Article I of the City Land Development Code. Land in this subdivision is restricted to the Impervious cover limits of Sec. 13-2-544, WPLADS, LLC.

Erosion/Sedimentation controls are required for all construction of a building, single family and duplex construction, pursuant to Sec. 13-7-14, DDC.

No cut or fill shall exceed a depth of four feet except for structural excavation pursuant to Sec. 13-7-16, DDC.



CREAK TABLE

Point	Station	Bearing	Distance	Point	Station	Bearing	Distance
1	1	N 26°01'26" E	166.47'	1	1	N 26°01'26" E	166.47'
2	2	S 26°01'26" W	166.47'	2	2	S 26°01'26" W	166.47'
3	3	N 26°01'26" E	166.47'	3	3	N 26°01'26" E	166.47'
4	4	S 26°01'26" W	166.47'	4	4	S 26°01'26" W	166.47'
5	5	N 26°01'26" E	166.47'	5	5	N 26°01'26" E	166.47'
6	6	S 26°01'26" W	166.47'	6	6	S 26°01'26" W	166.47'
7	7	N 26°01'26" E	166.47'	7	7	N 26°01'26" E	166.47'
8	8	S 26°01'26" W	166.47'	8	8	S 26°01'26" W	166.47'
9	9	N 26°01'26" E	166.47'	9	9	N 26°01'26" E	166.47'
10	10	S 26°01'26" W	166.47'	10	10	S 26°01'26" W	166.47'
11	11	N 26°01'26" E	166.47'	11	11	N 26°01'26" E	166.47'
12	12	S 26°01'26" W	166.47'	12	12	S 26°01'26" W	166.47'
13	13	N 26°01'26" E	166.47'	13	13	N 26°01'26" E	166.47'
14	14	S 26°01'26" W	166.47'	14	14	S 26°01'26" W	166.47'
15	15	N 26°01'26" E	166.47'	15	15	N 26°01'26" E	166.47'
16	16	S 26°01'26" W	166.47'	16	16	S 26°01'26" W	166.47'
17	17	N 26°01'26" E	166.47'	17	17	N 26°01'26" E	166.47'
18	18	S 26°01'26" W	166.47'	18	18	S 26°01'26" W	166.47'
19	19	N 26°01'26" E	166.47'	19	19	N 26°01'26" E	166.47'
20	20	S 26°01'26" W	166.47'	20	20	S 26°01'26" W	166.47'
21	21	N 26°01'26" E	166.47'	21	21	N 26°01'26" E	166.47'
22	22	S 26°01'26" W	166.47'	22	22	S 26°01'26" W	166.47'
23	23	N 26°01'26" E	166.47'	23	23	N 26°01'26" E	166.47'
24	24	S 26°01'26" W	166.47'	24	24	S 26°01'26" W	166.47'
25	25	N 26°01'26" E	166.47'	25	25	N 26°01'26" E	166.47'
26	26	S 26°01'26" W	166.47'	26	26	S 26°01'26" W	166.47'
27	27	N 26°01'26" E	166.47'	27	27	N 26°01'26" E	166.47'
28	28	S 26°01'26" W	166.47'	28	28	S 26°01'26" W	166.47'
29	29	N 26°01'26" E	166.47'	29	29	N 26°01'26" E	166.47'
30	30	S 26°01'26" W	166.47'	30	30	S 26°01'26" W	166.47'
31	31	N 26°01'26" E	166.47'	31	31	N 26°01'26" E	166.47'
32	32	S 26°01'26" W	166.47'	32	32	S 26°01'26" W	166.47'
33	33	N 26°01'26" E	166.47'	33	33	N 26°01'26" E	166.47'
34	34	S 26°01'26" W	166.47'	34	34	S 26°01'26" W	166.47'
35	35	N 26°01'26" E	166.47'	35	35	N 26°01'26" E	166.47'
36	36	S 26°01'26" W	166.47'	36	36	S 26°01'26" W	166.47'
37	37	N 26°01'26" E	166.47'	37	37	N 26°01'26" E	166.47'
38	38	S 26°01'26" W	166.47'	38	38	S 26°01'26" W	166.47'
39	39	N 26°01'26" E	166.47'	39	39	N 26°01'26" E	166.47'
40	40	S 26°01'26" W	166.47'	40	40	S 26°01'26" W	166.47'
41	41	N 26°01'26" E	166.47'	41	41	N 26°01'26" E	166.47'
42	42	S 26°01'26" W	166.47'	42	42	S 26°01'26" W	166.47'
43	43	N 26°01'26" E	166.47'	43	43	N 26°01'26" E	166.47'
44	44	S 26°01'26" W	166.47'	44	44	S 26°01'26" W	166.47'
45	45	N 26°01'26" E	166.47'	45	45	N 26°01'26" E	166.47'
46	46	S 26°01'26" W	166.47'	46	46	S 26°01'26" W	166.47'
47	47	N 26°01'26" E	166.47'	47	47	N 26°01'26" E	166.47'
48	48	S 26°01'26" W	166.47'	48	48	S 26°01'26" W	166.47'
49	49	N 26°01'26" E	166.47'	49	49	N 26°01'26" E	166.47'
50	50	S 26°01'26" W	166.47'	50	50	S 26°01'26" W	166.47'
51	51	N 26°01'26" E	166.47'	51	51	N 26°01'26" E	166.47'
52	52	S 26°01'26" W	166.47'	52	52	S 26°01'26" W	166.47'
53	53	N 26°01'26" E	166.47'	53	53	N 26°01'26" E	166.47'
54	54	S 26°01'26" W	166.47'	54	54	S 26°01'26" W	166.47'
55	55	N 26°01'26" E	166.47'	55	55	N 26°01'26" E	166.47'
56	56	S 26°01'26" W	166.47'	56	56	S 26°01'26" W	166.47'
57	57	N 26°01'26" E	166.47'	57	57	N 26°01'26" E	166.47'
58	58	S 26°01'26" W	166.47'	58	58	S 26°01'26" W	166.47'
59	59	N 26°01'26" E	166.47'	59	59	N 26°01'26" E	166.47'
60	60	S 26°01'26" W	166.47'	60	60	S 26°01'26" W	166.47'
61	61	N 26°01'26" E	166.47'	61	61	N 26°01'26" E	166.47'
62	62	S 26°01'26" W	166.47'	62	62	S 26°01'26" W	166.47'
63	63	N 26°01'26" E	166.47'	63	63	N 26°01'26" E	166.47'
64	64	S 26°01'26" W	166.47'	64	64	S 26°01'26" W	166.47'
65	65	N 26°01'26" E	166.47'	65	65	N 26°01'26" E	166.47'
66	66	S 26°01'26" W	166.47'	66	66	S 26°01'26" W	166.47'
67	67	N 26°01'26" E	166.47'	67	67	N 26°01'26" E	166.47'
68	68	S 26°01'26" W	166.47'	68	68	S 26°01'26" W	166.47'
69	69	N 26°01'26" E	166.47'	69	69	N 26°01'26" E	166.47'
70	70	S 26°01'26" W	166.47'	70	70	S 26°01'26" W	166.47'
71	71	N 26°01'26" E	166.47'	71	71	N 26°01'26" E	166.47'
72	72	S 26°01'26" W	166.47'	72	72	S 26°01'26" W	166.47'
73	73	N 26°01'26" E	166.47'	73	73	N 26°01'26" E	166.47'
74	74	S 26°01'26" W	166.47'	74	74	S 26°01'26" W	166.47'
75	75	N 26°01'26" E	166.47'	75	75	N 26°01'26" E	166.47'
76	76	S 26°01'26" W	166.47'	76	76	S 26°01'26" W	166.47'
77	77	N 26°01'26" E	166.47'	77	77	N 26°01'26" E	166.47'
78	78	S 26°01'26" W	166.47'	78	78	S 26°01'26" W	166.47'
79	79	N 26°01'26" E	166.47'	79	79	N 26°01'26" E	166.47'
80	80	S 26°01'26" W	166.47'	80	80	S 26°01'26" W	166.47'
81	81	N 26°01'26" E	166.47'	81	81	N 26°01'26" E	166.47'
82	82	S 26°01'26" W	166.47'	82	82	S 26°01'26" W	166.47'
83	83	N 26°01'26" E	166.47'	83	83	N 26°01'26" E	166.47'
84	84	S 26°01'26" W	166.47'	84	84	S 26°01'26" W	166.47'
85	85	N 26°01'26" E	166.47'	85	85	N 26°01'26" E	166.47'
86	86	S 26°01'26" W	166.47'	86	86	S 26°01'26" W	166.47'
87	87	N 26°01'26" E	166.47'	87	87	N 26°01'26" E	166.47'
88	88	S 26°01'26" W	166.47'	88	88	S 26°01'26" W	166.47'
89	89	N 26°01'26" E	166.47'	89	89	N 26°01'26" E	166.47'
90	90	S 26°01'26" W	166.47'	90	90	S 26°01'26" W	166.47'
91	91	N 26°01'26" E	166.47'	91	91	N 26°01'26" E	166.47'
92	92	S 26°01'26" W	166.47'	92	92	S 26°01'26" W	166.47'
93	93	N 26°01'26" E	166.47'	93	93	N 26°01'26" E	166.47'
94	94	S 26°01'26" W	166.47'	94	94	S 26°01'26" W	166.47'
95	95	N 26°01'26" E	166.47'	95	95	N 26°01'26" E	166.47'
96	96	S 26°01'26" W	166.47'	96	96	S 26°01'26" W	166.47'
97	97	N 26°01'26" E	166.47'	97	97	N 26°01'26" E	166.47'
98	98	S 26°01'26" W	166.47'	98	98	S 26°01'26" W	166.47'
99	99	N 26°01'26" E	166.47'	99	99	N 26°01'26" E	166.47'
100	100	S 26°01'26" W	166.47'	100	100	S 26°01'26" W	166.47'
101	101	N 26°01'26" E	166.47'	101	101	N 26°01'26" E	166.47'
102	102	S 26°01'26" W	166.47'	102	102	S 26°01'26" W	166.47'
103	103	N 26°01'26" E	166.47'	103	103	N 26°01'26" E	166.47'
104	104	S 26°01'26" W	166.47'	104	104	S 26°01'26" W	166.47'
105	105	N 26°01'26" E	166.47'	105	105	N 26°01'26" E	166.47'
106	106	S 26°01'26" W	166.47'	106	106	S 26°01'26" W	166.47'

CREAK TABLE

Point	Station	Bearing	Distance	Point	Station	Bearing	Distance
1	1	N 26°01'26" E	166.47'	1	1	N 26°01'26" E	166.47'
2	2	S 26°01'26" W	166.47'	2	2	S 26°01'26" W	166.47'
3	3	N 26°01'26" E	166.47'	3	3	N 26°01'26" E	166.47'
4	4	S 26°01'26" W	166.47'	4	4	S 26°01'26" W	166.47'
5	5	N 26°01'26" E	166.47'	5	5	N 26°01'26" E	166.47'
6	6	S 26°01'26" W	166.47'	6	6	S 26°01'26" W	166.47'
7	7	N 26°01'26" E	166.47'	7	7	N 26°01'26" E	166.47'
8	8	S 26°01'26" W	166.47'	8	8	S 26°01'26" W	166.47'
9	9	N 26°01'26" E	166.47'	9	9	N 26°01'26" E	166.47'
10	10	S 26°01'26" W	166.47'	10	10	S 26°01'26" W	166.47'
11	11	N 26°01'26" E	166.47'	11	11	N 26°01'26" E	166.47'
12	12	S 26°01'26" W	166.47'	12	12	S 26°01'26" W	166.47'
13	13	N 26°01'26" E	166.47'				

