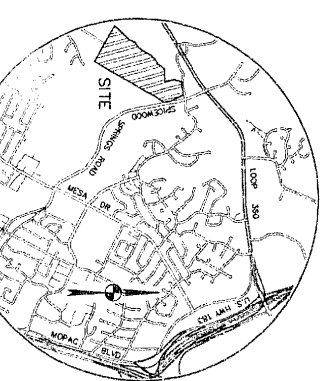
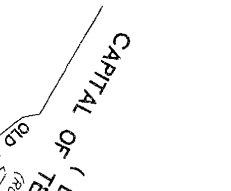
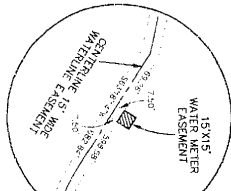
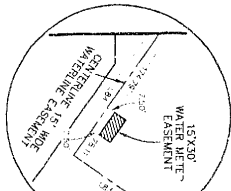
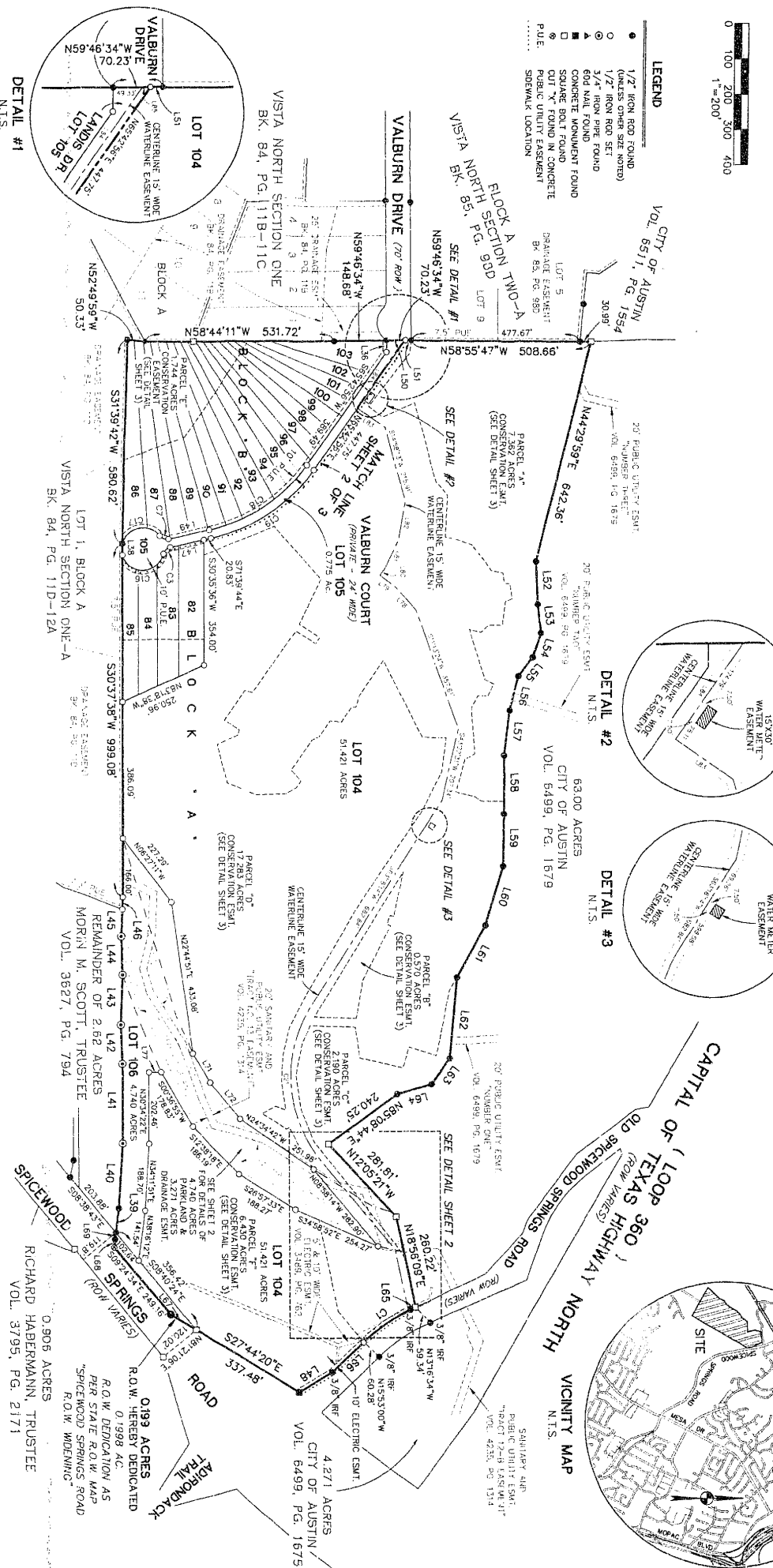


TREETOPS SUBDIVISION



- LEGEND**
- 1/2" IRON ROD FOUND (UNLESS OTHERWISE NOTED)
 - 1/2" IRON ROD SET
 - ▲ 60# GAL. ROUND
 - 60# GAL. ROUND
 - SQUARE BOLT FOUND
 - ◇ CUT "X" FOUND IN CONCRETE
 - PUBLIC UTILITY EASEMENT
 - SEWER/PAVEMENT LOCATION



DETAIL #1

CURVE TABLE

LINE TABLE

No.	Bearing	Distance	No.	Bearing	Distance
01	N59°46'34\"/>	70.23	121	N59°46'34\"/>	70.23
02	N59°46'34\"/>	70.23	122	N59°46'34\"/>	70.23
03	N59°46'34\"/>	70.23	123	N59°46'34\"/>	70.23
04	N59°46'34\"/>	70.23	124	N59°46'34\"/>	70.23
05	N59°46'34\"/>	70.23	125	N59°46'34\"/>	70.23
06	N59°46'34\"/>	70.23	126	N59°46'34\"/>	70.23
07	N59°46'34\"/>	70.23	127	N59°46'34\"/>	70.23
08	N59°46'34\"/>	70.23	128	N59°46'34\"/>	70.23
09	N59°46'34\"/>	70.23	129	N59°46'34\"/>	70.23
10	N59°46'34\"/>	70.23	130	N59°46'34\"/>	70.23
11	N59°46'34\"/>	70.23	131	N59°46'34\"/>	70.23
12	N59°46'34\"/>	70.23	132	N59°46'34\"/>	70.23
13	N59°46'34\"/>	70.23	133	N59°46'34\"/>	70.23
14	N59°46'34\"/>	70.23	134	N59°46'34\"/>	70.23
15	N59°46'34\"/>	70.23	135	N59°46'34\"/>	70.23
16	N59°46'34\"/>	70.23	136	N59°46'34\"/>	70.23
17	N59°46'34\"/>	70.23	137	N59°46'34\"/>	70.23
18	N59°46'34\"/>	70.23	138	N59°46'34\"/>	70.23
19	N59°46'34\"/>	70.23	139	N59°46'34\"/>	70.23
20	N59°46'34\"/>	70.23	140	N59°46'34\"/>	70.23
21	N59°46'34\"/>	70.23	141	N59°46'34\"/>	70.23

No.	Bearing	Distance	No.	Bearing	Distance
1	N59°46'34\"/>	70.23	142	N59°46'34\"/>	70.23
2	N59°46'34\"/>	70.23	143	N59°46'34\"/>	70.23
3	N59°46'34\"/>	70.23	144	N59°46'34\"/>	70.23
4	N59°46'34\"/>	70.23	145	N59°46'34\"/>	70.23
5	N59°46'34\"/>	70.23	146	N59°46'34\"/>	70.23
6	N59°46'34\"/>	70.23	147	N59°46'34\"/>	70.23
7	N59°46'34\"/>	70.23	148	N59°46'34\"/>	70.23
8	N59°46'34\"/>	70.23	149	N59°46'34\"/>	70.23
9	N59°46'34\"/>	70.23	150	N59°46'34\"/>	70.23
10	N59°46'34\"/>	70.23	151	N59°46'34\"/>	70.23
11	N59°46'34\"/>	70.23	152	N59°46'34\"/>	70.23
12	N59°46'34\"/>	70.23	153	N59°46'34\"/>	70.23
13	N59°46'34\"/>	70.23	154	N59°46'34\"/>	70.23
14	N59°46'34\"/>	70.23	155	N59°46'34\"/>	70.23
15	N59°46'34\"/>	70.23	156	N59°46'34\"/>	70.23
16	N59°46'34\"/>	70.23	157	N59°46'34\"/>	70.23
17	N59°46'34\"/>	70.23	158	N59°46'34\"/>	70.23
18	N59°46'34\"/>	70.23	159	N59°46'34\"/>	70.23
19	N59°46'34\"/>	70.23	160	N59°46'34\"/>	70.23
20	N59°46'34\"/>	70.23	161	N59°46'34\"/>	70.23
21	N59°46'34\"/>	70.23	162	N59°46'34\"/>	70.23

No.	Bearing	Distance	No.	Bearing	Distance
1	N59°46'34\"/>	70.23	163	N59°46'34\"/>	70.23
2	N59°46'34\"/>	70.23	164	N59°46'34\"/>	70.23
3	N59°46'34\"/>	70.23	165	N59°46'34\"/>	70.23
4	N59°46'34\"/>	70.23	166	N59°46'34\"/>	70.23
5	N59°46'34\"/>	70.23	167	N59°46'34\"/>	70.23
6	N59°46'34\"/>	70.23	168	N59°46'34\"/>	70.23
7	N59°46'34\"/>	70.23	169	N59°46'34\"/>	70.23
8	N59°46'34\"/>	70.23	170	N59°46'34\"/>	70.23
9	N59°46'34\"/>	70.23	171	N59°46'34\"/>	70.23
10	N59°46'34\"/>	70.23	172	N59°46'34\"/>	70.23
11	N59°46'34\"/>	70.23	173	N59°46'34\"/>	70.23
12	N59°46'34\"/>	70.23	174	N59°46'34\"/>	70.23
13	N59°46'34\"/>	70.23	175	N59°46'34\"/>	70.23
14	N59°46'34\"/>	70.23	176	N59°46'34\"/>	70.23
15	N59°46'34\"/>	70.23	177	N59°46'34\"/>	70.23
16	N59°46'34\"/>	70.23	178	N59°46'34\"/>	70.23
17	N59°46'34\"/>	70.23	179	N59°46'34\"/>	70.23
18	N59°46'34\"/>	70.23	180	N59°46'34\"/>	70.23
19	N59°46'34\"/>	70.23	181	N59°46'34\"/>	70.23
20	N59°46'34\"/>	70.23	182	N59°46'34\"/>	70.23
21	N59°46'34\"/>	70.23	183	N59°46'34\"/>	70.23

TREETOPS SUBDIVISION

DATE: AUGUST, 1995
 PREPARED BY:

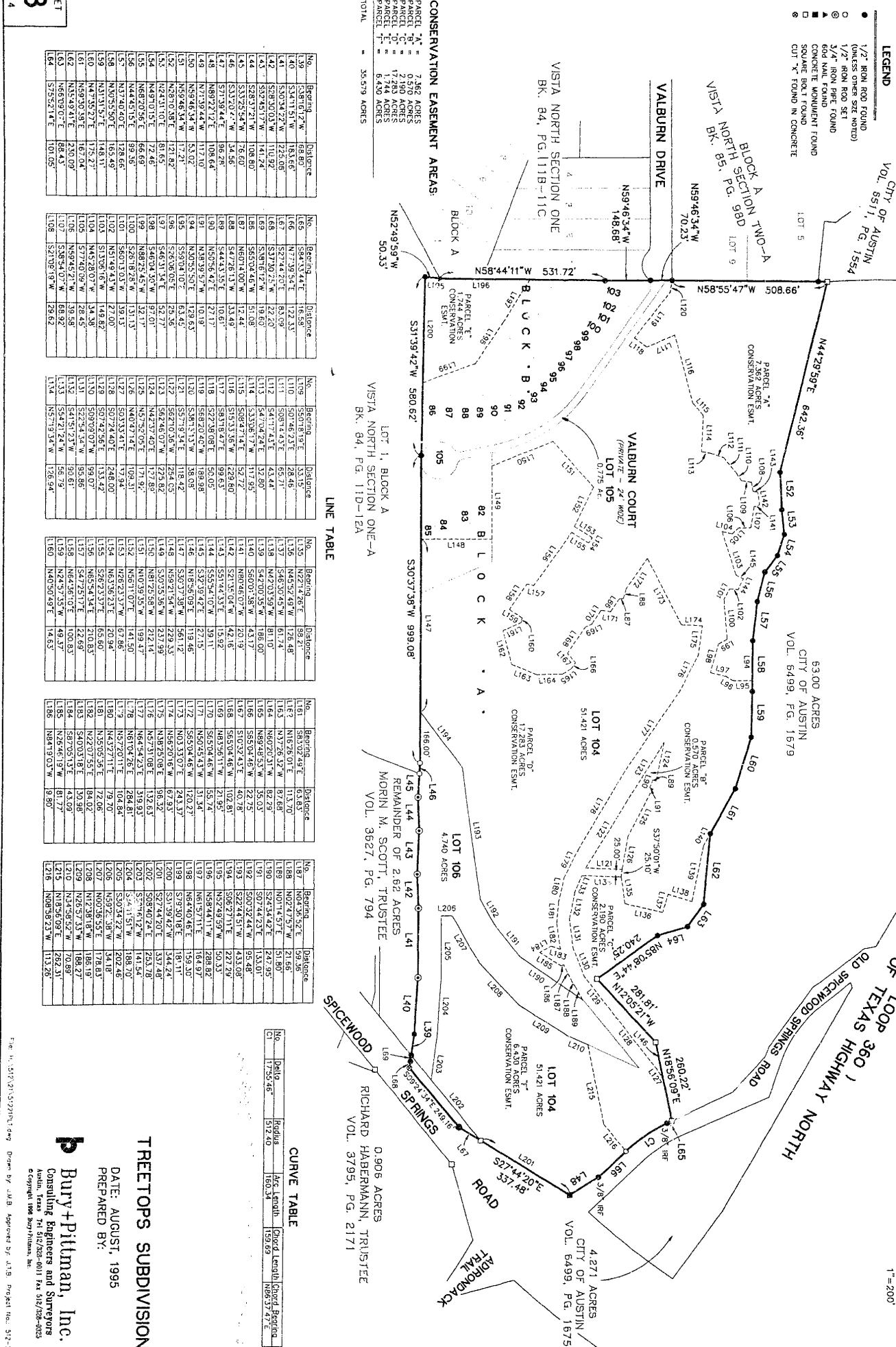
Bury+Pittman, Inc.
 Consulting Engineers and Surveyors
 Austin, Texas Tel 512/788-0011 Fax 512/788-8355
 © Copyright 1995 Bury+Pittman, Inc.

Project No: 512-71-58
 Date: 2/9/95

00009606120

TREETOPS SUBDIVISION

- LEGEND**
- 1/2" IRON ROD FOUND (UNLESS OTHER SIZE NOTED)
 - 1/2" IRON ROD SET
 - ⊙ 3/4" IRON PIPE FOUND
 - ⊠ 60d NAIL FOUND
 - ⊡ CONCRETE MONUMENT FOUND
 - ⊞ SQUARE EJECT FOUND
 - ⊞ CUT X FOUND IN CONCRETE



CONSERVATION EASEMENT AREAS:

Parcel	Acres
Parcel "A"	7.262
Parcel "B"	2.904
Parcel "C"	1.748
Parcel "D"	1.748
Parcel "E"	6.539
TOTAL	35.579

LINE TABLE

No.	Bearing	Distance	No.	Bearing	Distance
101	S81°11'41"W	185.66'	111	S81°11'41"W	185.66'
102	S81°11'41"W	185.66'	112	S81°11'41"W	185.66'
103	S81°11'41"W	185.66'	113	S81°11'41"W	185.66'
104	S81°11'41"W	185.66'	114	S81°11'41"W	185.66'
105	S81°11'41"W	185.66'	115	S81°11'41"W	185.66'
106	S81°11'41"W	185.66'	116	S81°11'41"W	185.66'
107	S81°11'41"W	185.66'	117	S81°11'41"W	185.66'
108	S81°11'41"W	185.66'	118	S81°11'41"W	185.66'
109	S81°11'41"W	185.66'	119	S81°11'41"W	185.66'
110	S81°11'41"W	185.66'	120	S81°11'41"W	185.66'

LINE TABLE

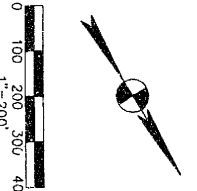
No.	Bearing	Distance	No.	Bearing	Distance
121	S81°11'41"W	185.66'	131	S81°11'41"W	185.66'
122	S81°11'41"W	185.66'	132	S81°11'41"W	185.66'
123	S81°11'41"W	185.66'	133	S81°11'41"W	185.66'
124	S81°11'41"W	185.66'	134	S81°11'41"W	185.66'
125	S81°11'41"W	185.66'	135	S81°11'41"W	185.66'
126	S81°11'41"W	185.66'	136	S81°11'41"W	185.66'
127	S81°11'41"W	185.66'	137	S81°11'41"W	185.66'
128	S81°11'41"W	185.66'	138	S81°11'41"W	185.66'
129	S81°11'41"W	185.66'	139	S81°11'41"W	185.66'
130	S81°11'41"W	185.66'	140	S81°11'41"W	185.66'

LINE TABLE

No.	Bearing	Distance	No.	Bearing	Distance
141	S81°11'41"W	185.66'	151	S81°11'41"W	185.66'
142	S81°11'41"W	185.66'	152	S81°11'41"W	185.66'
143	S81°11'41"W	185.66'	153	S81°11'41"W	185.66'
144	S81°11'41"W	185.66'	154	S81°11'41"W	185.66'
145	S81°11'41"W	185.66'	155	S81°11'41"W	185.66'
146	S81°11'41"W	185.66'	156	S81°11'41"W	185.66'
147	S81°11'41"W	185.66'	157	S81°11'41"W	185.66'
148	S81°11'41"W	185.66'	158	S81°11'41"W	185.66'
149	S81°11'41"W	185.66'	159	S81°11'41"W	185.66'
150	S81°11'41"W	185.66'	160	S81°11'41"W	185.66'

CURVE TABLE

No.	Date	Radius	Arc Length	Chord Length	Chord Bearing
1	1/25/48	512.40	180.34	159.69	N68°37'47"E



TREETOPS SUBDIVISION

DATE: AUGUST, 1995
 PREPARED BY:

Bury + Pitman, Inc.
 Consulting Engineers and Surveyors
 Austin, Texas, Tel: 512/225-0011 Fax: 512/258-0653
 © Copyright 1995 Bury Pitman, Inc.

956⁰⁰ A0631 5/19/97

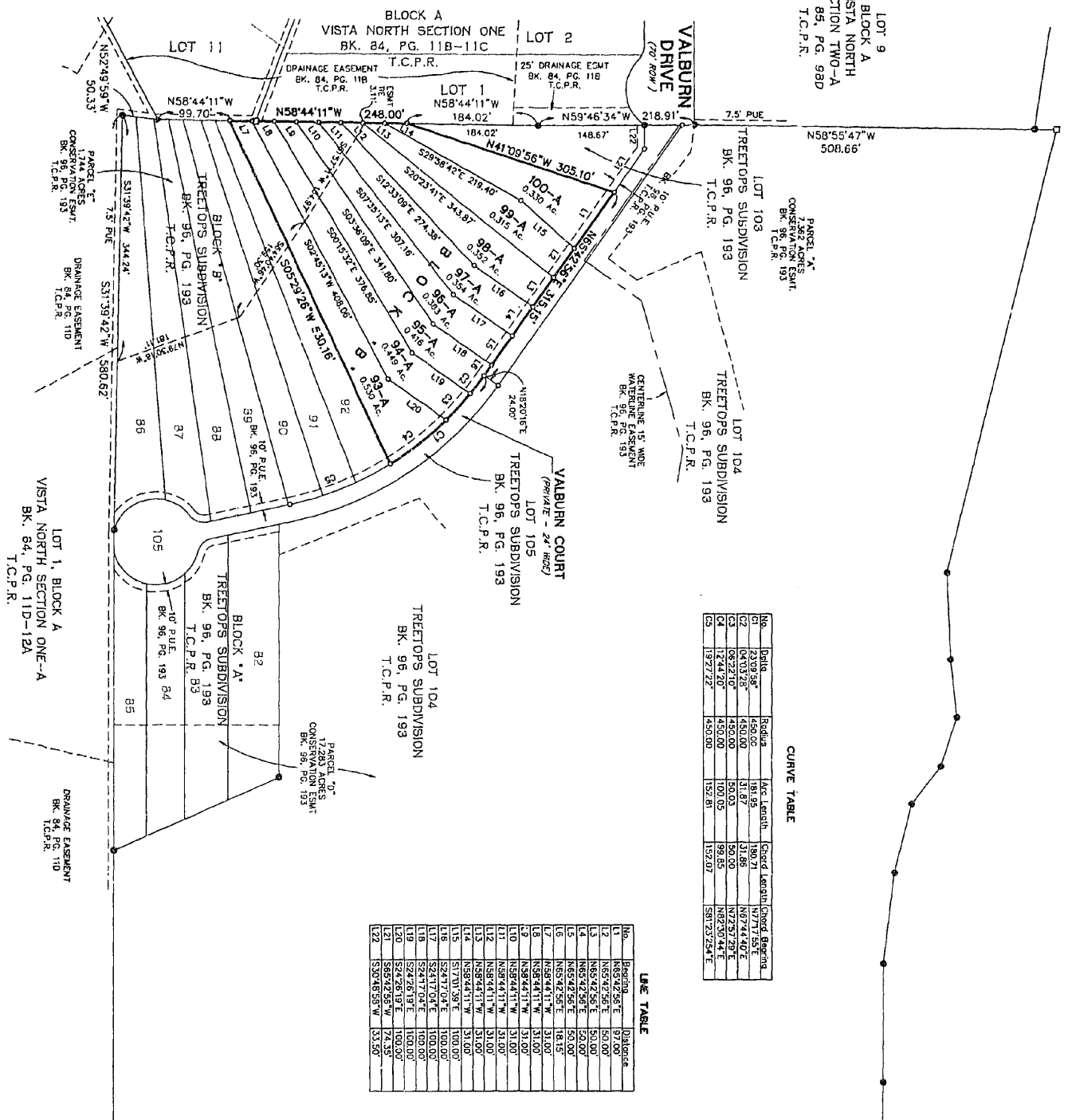
MISC FILM CODE
00009715029

99 52

LOT 9
BLOCK A
VISTA NORTH
SECTION TWO-A
BK. 85, PG. 98D
T.C.P.R.

AMENDED PLAT OF LOTS 93 - 102, BLOCK B
TREETOPS SUBDIVISION

TRAVIS COUNTY PLAT VOL: 99 PAGE 52

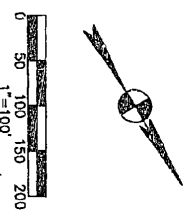
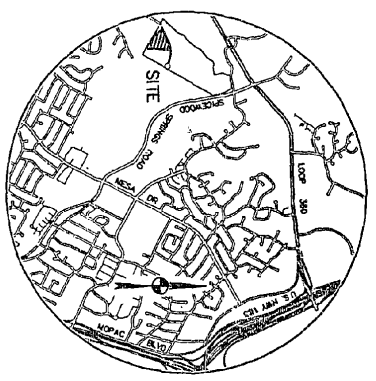


CURVE TABLE

No.	Bearing	Radius	Arc Length	Chord Length	Chord Bearing
01	S23°09'36"	450.00	181.95	190.71	N77°17'53"E
02	S64°03'28"	450.00	31.87	31.86	N67°44'40"E
03	S72°42'28"	450.00	120.00	99.80	N62°30'24"E
04	S27°22'22"	450.00	152.81	152.07	S81°25'24"E

LINE TABLE

No.	Bearing	Distance
01	N58°44'11"W	99.70
02	S52°42'28"E	50.00
03	N58°44'11"W	184.02
04	S65°42'56"E	50.00
05	N59°46'34"W	218.91
06	S59°42'56"E	18.15
07	N58°44'11"W	31.00
08	S58°44'11"W	31.00
09	N58°44'11"W	31.00
10	N58°44'11"W	31.00
11	N58°44'11"W	31.00
12	N58°44'11"W	31.00
13	N58°44'11"W	31.00
14	N58°44'11"W	31.00
15	S17°01'38"E	100.00
16	S24°17'04"E	100.00
17	S24°17'04"E	100.00
18	S24°17'04"E	100.00
19	S24°26'19"E	100.00
20	S24°26'19"E	14.35
21	S59°42'56"E	17.50
22	S59°42'56"W	53.50



- LEGEND
- 1/2" IRON ROD FOUND (UNLESS OTHERWISE NOTED)
 - △ 5/8" IRON FOUND
 - ▲ 5/8" NAIL FOUND
 - SQUARE EGG FOUND
 - ◇ PUBLIC UTILITY FOUND
 - T.C.P.R. TRANS COUNTY PLAT RECORDS

AMENDED PLAT OF
LOTS 93 - 102
BLOCK B
TREETOPS SUBDIVISION

DATE: NOVEMBER, 1996
PREPARED BY:

B Bury+Pittman, Inc.
Consulting Engineers and Surveyors
Austin, Texas Tel 512/228-0011 Fax 512/228-0025
© Copyright 1997 Bury+Pittman, Inc.

CG-96-0254.0A

File H 512VAV122193.dwg Drawn by JTB/RJW Approved by JTB Project No: 37-2126

