

PLAT MAP RECORDING SHEET

INSTRUMENT # --

2000025623 12 PGS

DEDICATOR – 452 LTD

SUBDIVISION NAME – GABRIELS OVERLOOK SECTION ONE

**MAP RECORDED IN - CABINET S, SLIDES 218, 219, 220, 221, 222, 223, 224, 225,
226, 227, 228 & 229**

**PROPERTY FORMERLY KNOWN AS – 267.8745 AC FISK G SVY ABST 5 AND
MANLOVE B SVY ABST 420**

HAND TO – STEVE SORENSON 244-4279

INSTRUMENT DATE – APRIL 7, 2000

FILE DATE – APRIL 25, 2000

**FILED AND RECORDED
OFFICIAL PUBLIC RECORDS**

Nancy E. Rister

04-25-2000 03:33 PM 2000025623
ANDERSON \$606.00
NANCY E. RISTER, COUNTY CLERK
WILLIAMSON COUNTY, TEXAS

CURVE	RADIUS	LENGTH	CHORD	BEARING	DEFLTA
C101	530.00'	78.24'	78.17'	S 03°09'16" E	08°37'29"
C102	530.00'	1.59'	1.59'	S 07°28'10" E	00°07'01"
C103	18.00'	23.91'	21.46'	N 46°44'48" E	91°20'19"
C104	470.00'	141.44'	141.44'	N 00°00'00" E	00°00'00"
C105	530.00'	170.22'	168.45'	N 05°39'00" E	18°24'05"
C106	470.00'	209.98'	208.24'	N 13°35'58" E	25°55'51"
C107	530.00'	28.62'	28.62'	N 16°33'58" E	02°52'39"
C108	530.00'	28.62'	28.62'	N 07°52'53" E	03°14'35"
C109	530.00'	167.62'	166.92'	N 06°05'02" E	18°07'17"
C110	530.00'	39.39'	39.29'	S 19°01'05" W	04°57'26"
C111	470.00'	182.78'	181.45'	S 01°27'05" W	22°16'55"
C112	470.00'	182.78'	181.45'	S 01°27'05" W	22°16'55"
C113	470.00'	182.78'	181.45'	S 01°27'05" W	22°16'55"
C114	15.00'	23.29'	21.02'	N 80°45'48" W	68°56'53"
C115	15.00'	23.29'	21.02'	N 80°45'48" W	68°56'53"
C116	15.00'	23.29'	21.02'	N 80°45'48" W	68°56'53"
C117	15.00'	23.29'	21.02'	N 80°45'48" W	68°56'53"
C118	15.00'	23.29'	21.02'	N 80°45'48" W	68°56'53"
C119	15.00'	23.29'	21.02'	N 80°45'48" W	68°56'53"
C120	15.00'	23.29'	21.02'	N 80°45'48" W	68°56'53"

Cabinet S Slide 218

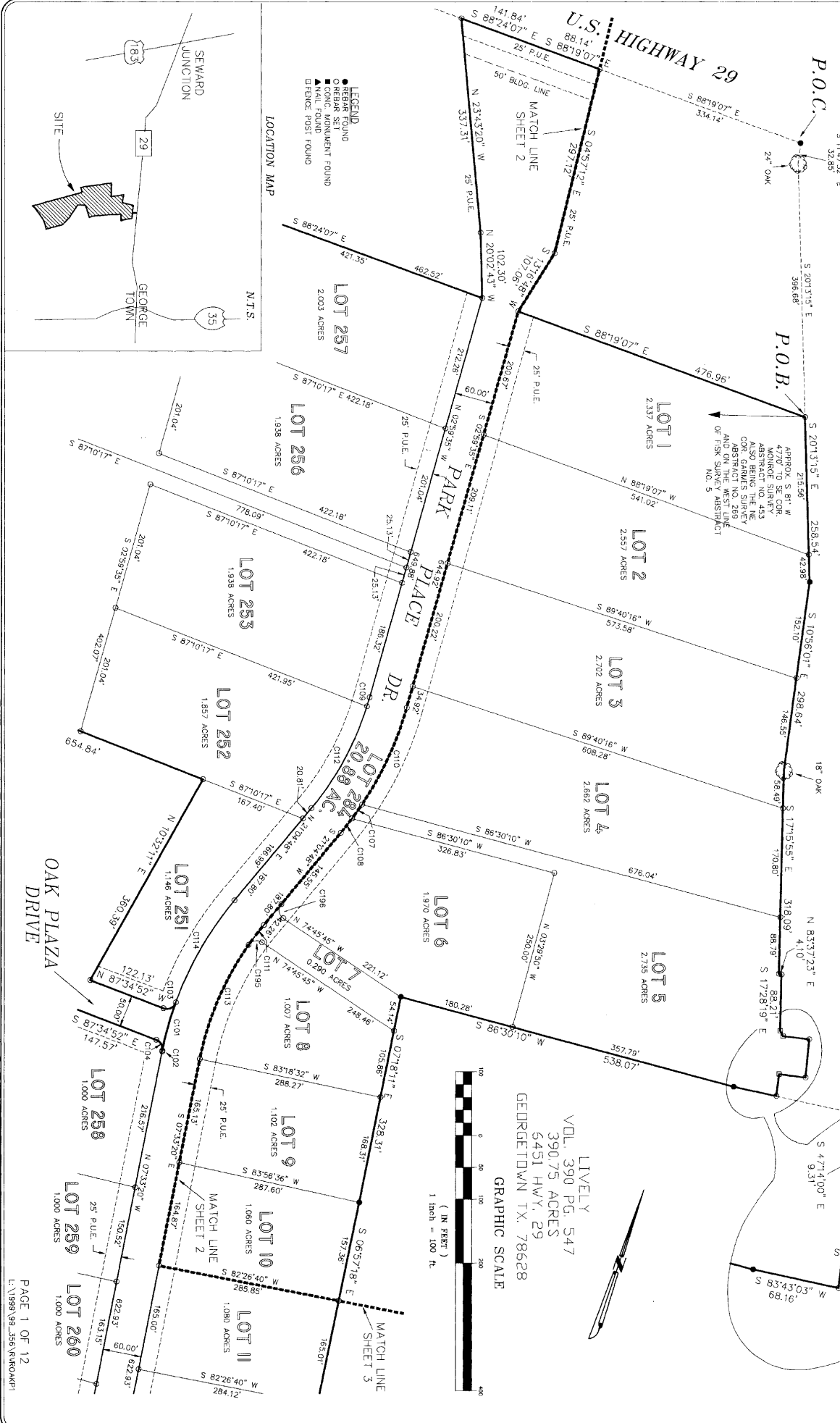
Doc # 2000025623

GABRIELS OVERLOOK - SECTION ONE

A PRIVATE SUBDIVISION IN PERMITTY
(NOT TO BE MAINTAINED BY WILLAMSON COUNTY)

MAUND TRUST
V.L. 908 PG. 203
48,567 ACRES
8400 RESEARCH BLVD.
AUSTIN TX. 78758

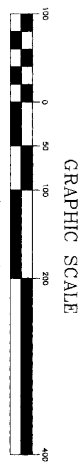
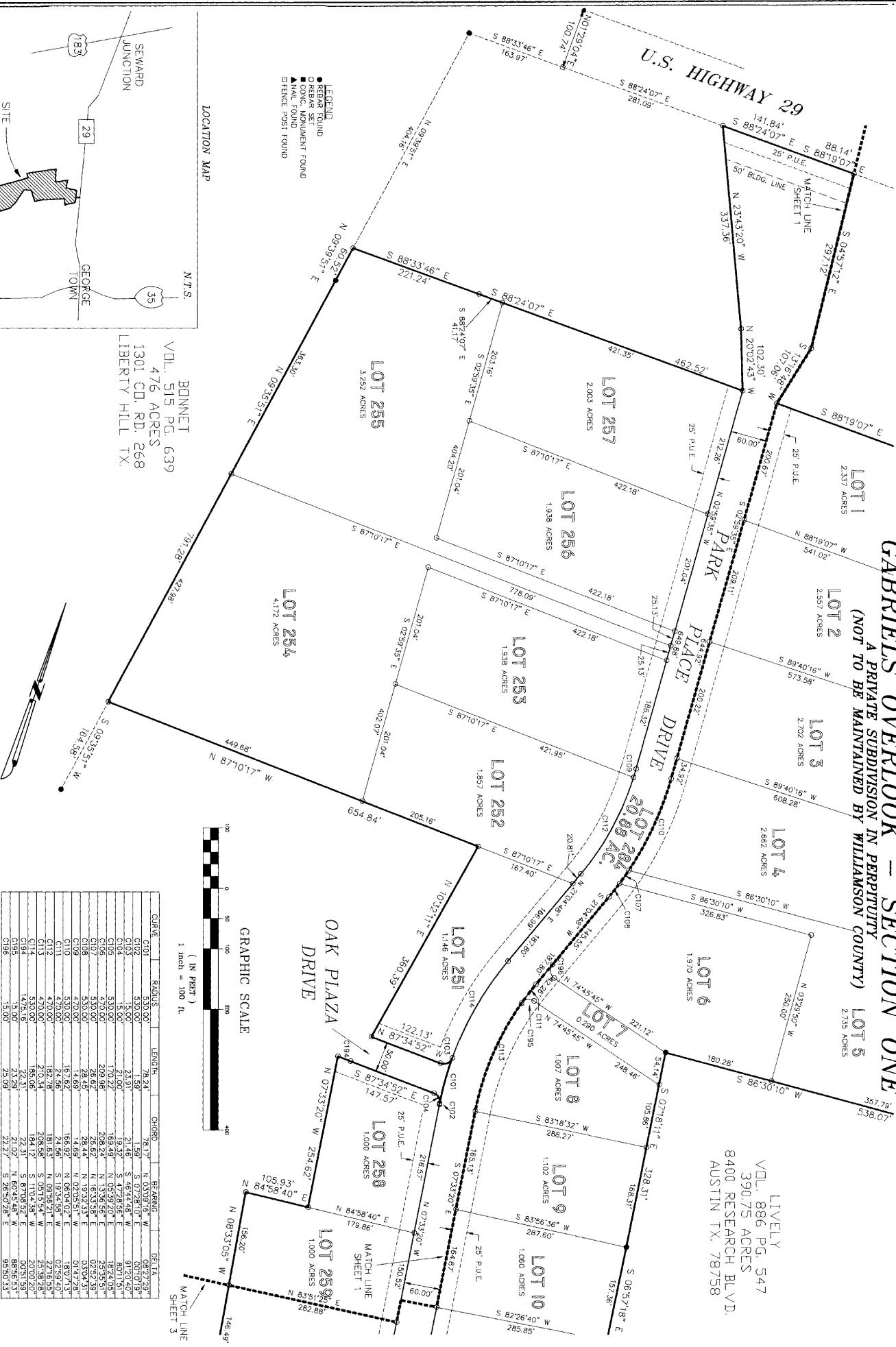
See Document #2006032604
Variance
For Lot 219, Gabriels Overlook
Section One



Cabinet S Side 219

GABRIELS OVERLOOK - SECTION ONE
 A PRIVATE SUBDIVISION IN PERPETUITY
 (NOT TO BE MAINTAINED BY WILLAMSON COUNTY) LOT 5

LIVELY
 VOL. 886 PG. 547
 390.75 ACRES
 8400 RESEARCH BLVD.
 AUSTIN TX. 78758



CHAVE	RADIUS	LENGTH	CHORD	BEARING	DELTA
C101	530.00'	78.24'	78.17'	N 07°18'16" W	082°27'29"
C102	530.00'	1.59'	1.59'	S 07°28'10" E	007°07'19"
C103	15.00'	23.91'	23.48'	S 74°14'48" W	91°21'40"
C104	15.00'	23.91'	23.48'	S 74°14'48" W	91°21'40"
C105	530.00'	1.7022'	1.6849'	N 05°59'20" E	182°24'03"
C106	470.00'	209.98'	209.98'	N 13°56'58" E	253°53'51"
C107	530.00'	26.62'	26.62'	N 16°53'58" E	07°47'39"
C108	530.00'	28.45'	28.44'	N 19°52'33" E	07°03'35"
C109	530.00'	167.62'	166.92'	N 06°04'02" E	180°7'13"
C110	470.00'	24.56'	24.56'	S 19°32'58" W	02°59'40"
C111	470.00'	182.78'	181.63'	N 09°58'21" E	180°7'13"
C112	470.00'	210.34'	208.93'	S 07°13'54" W	253°53'51"
C113	470.00'	210.34'	208.93'	S 07°13'54" W	253°53'51"
C114	470.00'	210.34'	208.93'	S 07°13'54" W	253°53'51"
C115	15.00'	23.29'	23.29'	S 28°50'28" E	95°50'33"
C116	15.00'	23.29'	23.27'	S 28°50'28" E	95°50'33"

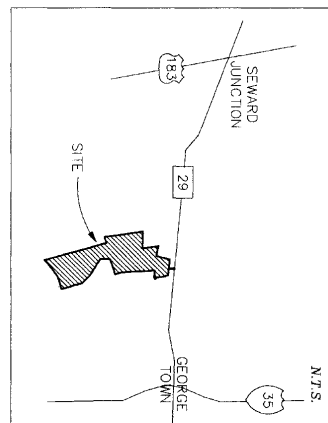
Cabinet S Slide 220

GABRIELS OVERLOOK - SECTION ONE

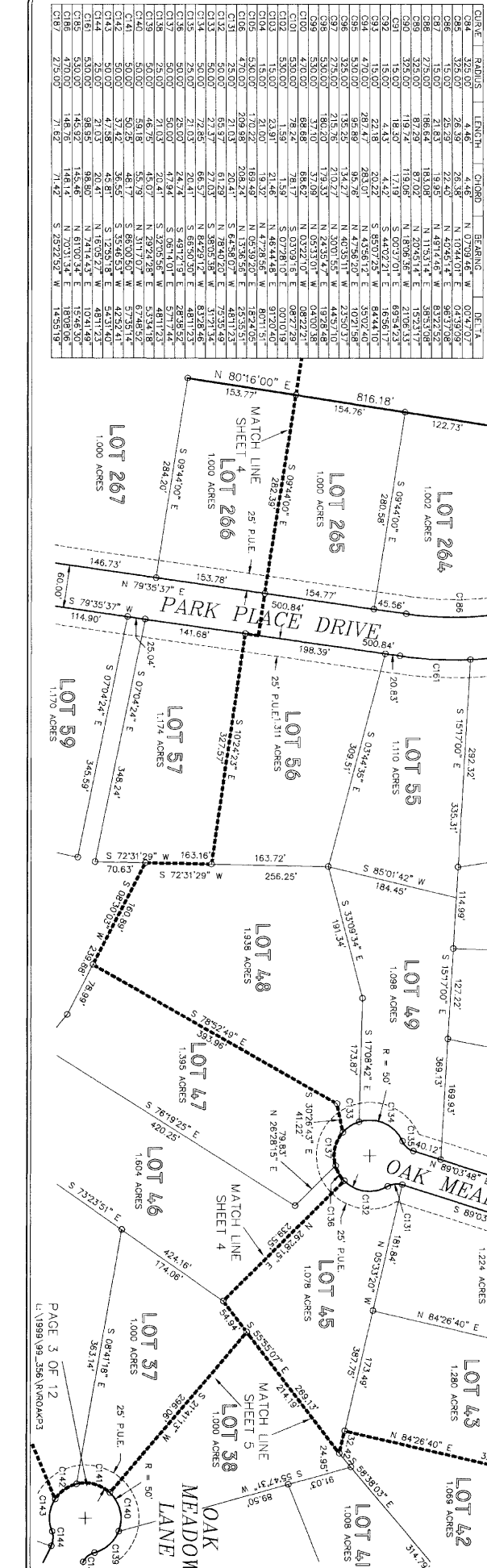
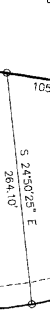
A PRIVATE SUBDIVISION IN PERPETUITY
(NOT TO BE MAINTAINED BY WILLIAMSON COUNTY)

LIVELY
VOL. 886 PG. 547
390.75 ACRES

- LEGEND
- REBAR FOUND
 - REBAR SET
 - CONC. MONUMENT FOUND
 - ▲ NAIL FOUND
 - ▼ BRONZE POST FOUND



CURVE	RADIUS	LENGTH	CHORD	BEARING	DTY	TA
C04	325.00	2.46	4.46	N 07°09'46" W	0.94	1.77
C05	325.00	2.46	4.46	N 07°09'46" W	0.94	1.77
C06	325.00	2.46	4.46	N 07°09'46" W	0.94	1.77
C07	325.00	2.46	4.46	N 07°09'46" W	0.94	1.77
C08	325.00	2.46	4.46	N 07°09'46" W	0.94	1.77
C09	325.00	2.46	4.46	N 07°09'46" W	0.94	1.77
C10	325.00	2.46	4.46	N 07°09'46" W	0.94	1.77
C11	325.00	2.46	4.46	N 07°09'46" W	0.94	1.77
C12	325.00	2.46	4.46	N 07°09'46" W	0.94	1.77
C13	325.00	2.46	4.46	N 07°09'46" W	0.94	1.77
C14	325.00	2.46	4.46	N 07°09'46" W	0.94	1.77
C15	325.00	2.46	4.46	N 07°09'46" W	0.94	1.77
C16	325.00	2.46	4.46	N 07°09'46" W	0.94	1.77
C17	325.00	2.46	4.46	N 07°09'46" W	0.94	1.77
C18	325.00	2.46	4.46	N 07°09'46" W	0.94	1.77
C19	325.00	2.46	4.46	N 07°09'46" W	0.94	1.77
C20	325.00	2.46	4.46	N 07°09'46" W	0.94	1.77
C21	325.00	2.46	4.46	N 07°09'46" W	0.94	1.77
C22	325.00	2.46	4.46	N 07°09'46" W	0.94	1.77
C23	325.00	2.46	4.46	N 07°09'46" W	0.94	1.77
C24	325.00	2.46	4.46	N 07°09'46" W	0.94	1.77
C25	325.00	2.46	4.46	N 07°09'46" W	0.94	1.77
C26	325.00	2.46	4.46	N 07°09'46" W	0.94	1.77
C27	325.00	2.46	4.46	N 07°09'46" W	0.94	1.77
C28	325.00	2.46	4.46	N 07°09'46" W	0.94	1.77
C29	325.00	2.46	4.46	N 07°09'46" W	0.94	1.77
C30	325.00	2.46	4.46	N 07°09'46" W	0.94	1.77
C31	325.00	2.46	4.46	N 07°09'46" W	0.94	1.77
C32	325.00	2.46	4.46	N 07°09'46" W	0.94	1.77
C33	325.00	2.46	4.46	N 07°09'46" W	0.94	1.77
C34	325.00	2.46	4.46	N 07°09'46" W	0.94	1.77
C35	325.00	2.46	4.46	N 07°09'46" W	0.94	1.77
C36	325.00	2.46	4.46	N 07°09'46" W	0.94	1.77
C37	325.00	2.46	4.46	N 07°09'46" W	0.94	1.77
C38	325.00	2.46	4.46	N 07°09'46" W	0.94	1.77
C39	325.00	2.46	4.46	N 07°09'46" W	0.94	1.77
C40	325.00	2.46	4.46	N 07°09'46" W	0.94	1.77
C41	325.00	2.46	4.46	N 07°09'46" W	0.94	1.77
C42	325.00	2.46	4.46	N 07°09'46" W	0.94	1.77
C43	325.00	2.46	4.46	N 07°09'46" W	0.94	1.77
C44	325.00	2.46	4.46	N 07°09'46" W	0.94	1.77
C45	325.00	2.46	4.46	N 07°09'46" W	0.94	1.77
C46	325.00	2.46	4.46	N 07°09'46" W	0.94	1.77
C47	325.00	2.46	4.46	N 07°09'46" W	0.94	1.77
C48	325.00	2.46	4.46	N 07°09'46" W	0.94	1.77
C49	325.00	2.46	4.46	N 07°09'46" W	0.94	1.77
C50	325.00	2.46	4.46	N 07°09'46" W	0.94	1.77
C51	325.00	2.46	4.46	N 07°09'46" W	0.94	1.77
C52	325.00	2.46	4.46	N 07°09'46" W	0.94	1.77
C53	325.00	2.46	4.46	N 07°09'46" W	0.94	1.77
C54	325.00	2.46	4.46	N 07°09'46" W	0.94	1.77
C55	325.00	2.46	4.46	N 07°09'46" W	0.94	1.77
C56	325.00	2.46	4.46	N 07°09'46" W	0.94	1.77
C57	325.00	2.46	4.46	N 07°09'46" W	0.94	1.77
C58	325.00	2.46	4.46	N 07°09'46" W	0.94	1.77
C59	325.00	2.46	4.46	N 07°09'46" W	0.94	1.77
C60	325.00	2.46	4.46	N 07°09'46" W	0.94	1.77
C61	325.00	2.46	4.46	N 07°09'46" W	0.94	1.77
C62	325.00	2.46	4.46	N 07°09'46" W	0.94	1.77
C63	325.00	2.46	4.46	N 07°09'46" W	0.94	1.77
C64	325.00	2.46	4.46	N 07°09'46" W	0.94	1.77
C65	325.00	2.46	4.46	N 07°09'46" W	0.94	1.77
C66	325.00	2.46	4.46	N 07°09'46" W	0.94	1.77
C67	325.00	2.46	4.46	N 07°09'46" W	0.94	1.77
C68	325.00	2.46	4.46	N 07°09'46" W	0.94	1.77
C69	325.00	2.46	4.46	N 07°09'46" W	0.94	1.77
C70	325.00	2.46	4.46	N 07°09'46" W	0.94	1.77
C71	325.00	2.46	4.46	N 07°09'46" W	0.94	1.77
C72	325.00	2.46	4.46	N 07°09'46" W	0.94	1.77
C73	325.00	2.46	4.46	N 07°09'46" W	0.94	1.77
C74	325.00	2.46	4.46	N 07°09'46" W	0.94	1.77
C75	325.00	2.46	4.46	N 07°09'46" W	0.94	1.77
C76	325.00	2.46	4.46	N 07°09'46" W	0.94	1.77
C77	325.00	2.46	4.46	N 07°09'46" W	0.94	1.77
C78	325.00	2.46	4.46	N 07°09'46" W	0.94	1.77
C79	325.00	2.46	4.46	N 07°09'46" W	0.94	1.77
C80	325.00	2.46	4.46	N 07°09'46" W	0.94	1.77
C81	325.00	2.46	4.46	N 07°09'46" W	0.94	1.77
C82	325.00	2.46	4.46	N 07°09'46" W	0.94	1.77
C83	325.00	2.46	4.46	N 07°09'46" W	0.94	1.77
C84	325.00	2.46	4.46	N 07°09'46" W	0.94	1.77
C85	325.00	2.46	4.46	N 07°09'46" W	0.94	1.77
C86	325.00	2.46	4.46	N 07°09'46" W	0.94	1.77
C87	325.00	2.46	4.46	N 07°09'46" W	0.94	1.77
C88	325.00	2.46	4.46	N 07°09'46" W	0.94	1.77
C89	325.00	2.46	4.46	N 07°09'46" W	0.94	1.77
C90	325.00	2.46	4.46	N 07°09'46" W	0.94	1.77
C91	325.00	2.46	4.46	N 07°09'46" W	0.94	1.77
C92	325.00	2.46	4.46	N 07°09'46" W	0.94	1.77
C93	325.00	2.46	4.46	N 07°09'46" W	0.94	1.77
C94	325.00	2.46	4.46	N 07°09'46" W	0.94	1.77
C95	325.00	2.46	4.46	N 07°09'46" W	0.94	1.77
C96	325.00	2.46	4.46	N 07°09'46" W	0.94	1.77
C97	325.00	2.46	4.46	N 07°09'46" W	0.94	1.77
C98	325.00	2.46	4.46	N 07°09'46" W	0.94	1.77
C99	325.00	2.46	4.46	N 07°09'46" W	0.94	1.77
C100	325.00	2.46	4.46	N 07°09'46" W	0.94	1.77

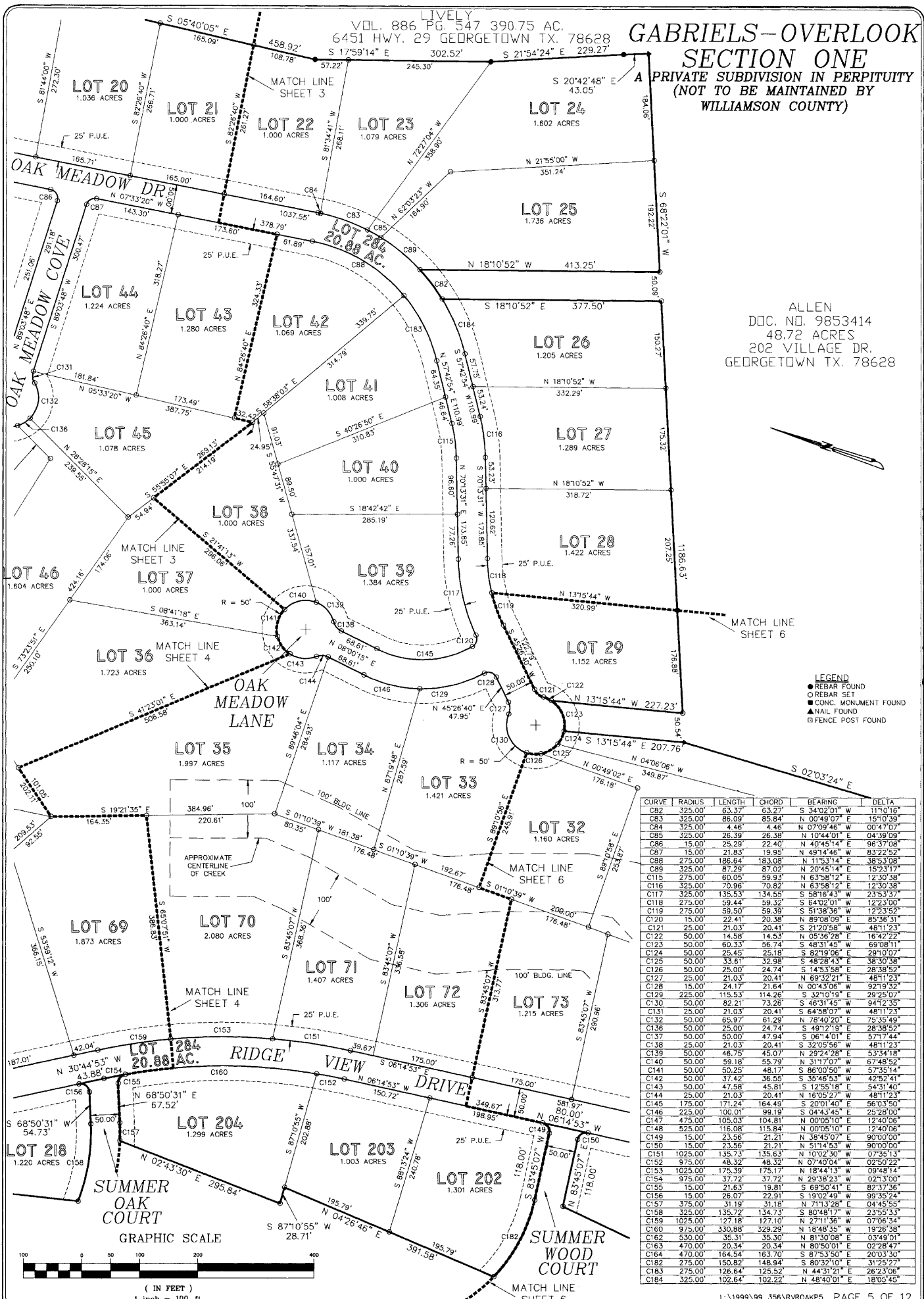


LIVELY
VOL. 886 PG. 547 390.75 AC.
6451 HWY. 29 GEORGETOWN TX. 78628

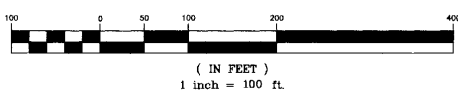
GABRIELS-OVERLOOK
SECTION ONE
A PRIVATE SUBDIVISION IN PERPETUITY
(NOT TO BE MAINTAINED BY
WILLIAMSON COUNTY)

ALLEN
DOC. NO. 9853414
48.72 ACRES
202 VILLAGE DR.
GEORGETOWN TX. 78628

Cabinet S Slide 222



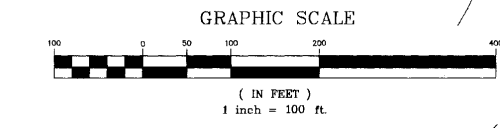
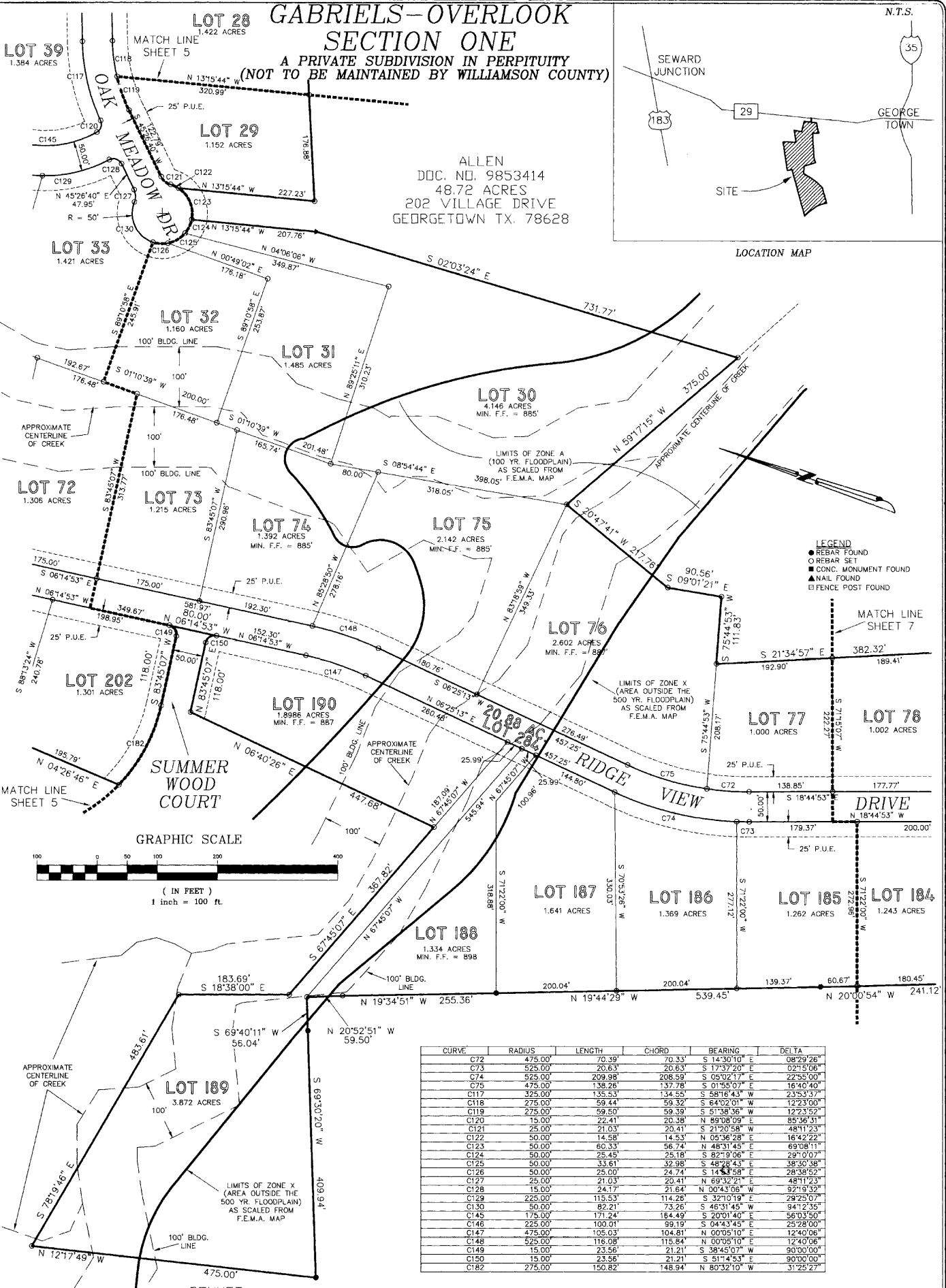
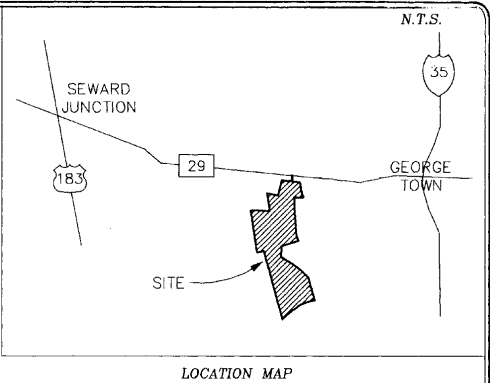
CURVE	RADIUS	LENGTH	CHORD	BEARING	DELTA
C82	325.00'	63.37'	63.27'	S 34°02'01" W	11°10'16"
C83	325.00'	86.09'	85.84'	N 00°48'07" E	151°0'59"
C84	325.00'	4.46'	4.46'	N 07°09'46" W	00°47'07"
C85	325.00'	26.39'	26.38'	N 10°44'01" E	04°39'09"
C86	15.00'	25.29'	22.40'	N 40°45'14" E	96°37'08"
C87	15.00'	21.83'	19.95'	N 49°14'46" W	83°22'52"
C88	275.00'	186.64'	183.08'	N 11°53'14" E	385°3'08"
C89	325.00'	87.25'	87.02'	N 20°45'14" E	189°3'17"
C115	275.00'	60.05'	59.93'	N 63°58'12" E	12°30'38"
C116	325.00'	70.96'	70.82'	N 63°58'12" E	12°30'38"
C117	325.00'	135.53'	134.55'	S 58°18'43" W	23°53'37"
C118	275.00'	59.44'	59.32'	N 11°53'14" E	122°3'00"
C119	275.00'	59.50'	59.39'	S 51°38'36" W	12°23'52"
C120	15.00'	22.41'	20.38'	N 89°08'09" E	85°38'31"
C121	25.00'	21.03'	20.41'	S 21°20'58" W	48°11'23"
C122	50.00'	14.58'	14.53'	N 05°36'28" E	16°42'22"
C123	50.00'	60.33'	56.74'	S 48°31'45" W	69°08'11"
C124	50.00'	25.45'	25.18'	S 82°19'06" E	29°10'07"
C125	50.00'	33.61'	32.98'	S 48°28'43" E	38°30'38"
C126	50.00'	25.00'	24.74'	S 14°53'58" E	28°38'52"
C127	25.00'	21.03'	20.41'	N 69°32'21" E	48°11'23"
C128	15.00'	24.17'	21.64'	N 00°43'06" W	92°9'32"
C129	225.00'	115.53'	114.26'	S 32°10'19" E	29°25'07"
C130	50.00'	82.21'	73.26'	S 46°31'45" W	94°12'35"
C131	25.00'	21.03'	20.41'	S 64°58'07" W	48°11'23"
C132	50.00'	65.97'	61.29'	N 78°40'20" E	75°35'49"
C136	50.00'	25.00'	24.74'	S 48°28'43" E	28°38'52"
C137	50.00'	50.25'	47.94'	S 06°14'01" E	57°17'44"
C138	25.00'	21.03'	20.41'	S 32°05'56" W	48°11'23"
C139	50.00'	46.75'	45.07'	N 29°24'28" E	53°34'18"
C140	50.00'	59.18'	55.79'	N 31°17'07" W	67°48'52"
C141	50.00'	50.25'	48.17'	S 86°00'50" E	57°35'14"
C142	50.00'	37.42'	36.55'	S 35°46'53" W	42°52'41"
C143	50.00'	47.58'	45.81'	S 12°55'18" E	54°31'40"
C144	25.00'	21.03'	20.41'	N 16°05'27" W	48°11'23"
C145	975.00'	171.24'	164.49'	S 20°01'40" E	56°03'50"
C146	225.00'	100.01'	99.19'	S 04°43'45" E	29°28'00"
C147	475.00'	105.03'	104.81'	N 00°05'10" E	12°40'06"
C148	525.00'	116.08'	115.84'	N 00°05'10" E	12°40'06"
C149	15.00'	23.56'	21.21'	N 38°45'07" E	90°00'00"
C150	15.00'	23.56'	21.21'	N 51°14'53" W	90°00'00"
C151	1025.00'	135.73'	135.63'	N 10°02'30" W	57°35'14"
C152	975.00'	48.32'	48.32'	N 07°40'04" W	02°50'22"
C153	1025.00'	175.39'	175.17'	N 18°44'13" W	09°48'14"
C154	975.00'	37.72'	37.72'	N 29°38'23" E	02°13'00"
C155	15.00'	21.63'	19.81'	S 69°50'41" E	82°37'36"
C156	350.00'	35.31'	35.30'	N 19°02'49" W	57°35'14"
C157	375.00'	31.19'	31.18'	N 71°13'28" E	04°45'55"
C158	325.00'	135.72'	134.73'	S 80°48'17" W	23°55'33"
C159	1025.00'	127.18'	127.10'	N 27°11'36" W	07°06'34"
C160	975.00'	330.88'	329.29'	N 18°48'55" W	19°36'38"
C162	530.00'	35.31'	35.30'	N 81°30'08" E	03°49'01"
C163	475.00'	20.34'	20.34'	N 80°50'01" E	02°28'47"
C164	475.00'	164.54'	163.70'	S 87°53'50" E	20°03'30"
C182	275.00'	150.82'	148.94'	S 80°32'10" E	31°25'27"
C183	275.00'	126.64'	125.52'	N 44°31'21" E	28°35'04"
C184	325.00'	102.64'	102.22'	N 48°40'01" E	18°55'45"



GABRIELS-OVERLOOK SECTION ONE

A PRIVATE SUBDIVISION IN PERPETUITY
(NOT TO BE MAINTAINED BY WILLIAMSON COUNTY)

ALLEN
DOC. NO. 9853414
48.72 ACRES
202 VILLAGE DRIVE
GEORGETOWN TX. 78628



- LEGEND
- REBAR FOUND
 - REBAR SET
 - CONC. MONUMENT FOUND
 - ▲ NAIL FOUND
 - FENCE POST FOUND

CURVE	RADIUS	LENGTH	CHORD	BEARING	DELTA
C72	475.00'	70.39'	70.33'	S 14°30'10" E	08°29'26"
C73	525.00'	20.63'	20.63'	S 17°37'00" E	02°15'06"
C74	525.00'	209.98'	208.59'	S 05°02'17" E	22°55'00"
C75	475.00'	138.26'	137.78'	S 01°55'07" E	16°40'40"
C117	325.00'	135.53'	134.55'	S 58°16'43" W	23°53'37"
C118	275.00'	59.44'	59.32'	S 64°02'01" W	12°23'00"
C119	275.00'	59.50'	59.39'	S 63°18'16" W	12°23'52"
C120	15.00'	22.41'	20.38'	S 89°08'09" E	85°36'31"
C121	25.00'	21.03'	20.41'	S 21°20'58" W	48°11'23"
C122	50.00'	14.58'	14.53'	N 05°36'28" E	16°42'22"
C123	50.00'	60.33'	96.74'	N 48°31'45" E	69°08'11"
C124	50.00'	25.45'	25.18'	S 82°19'06" E	29°10'07"
C125	50.00'	33.61'	32.98'	S 48°28'43" E	38°30'38"
C126	50.00'	25.00'	24.74'	S 14°53'58" E	28°38'52"
C127	25.00'	21.03'	20.41'	N 69°32'21" E	48°11'23"
C128	15.00'	24.17'	21.64'	N 00°43'06" W	92°19'32"
C129	225.00'	115.53'	114.28'	S 32°10'19" E	29°25'07"
C130	50.00'	82.21'	73.26'	S 46°31'45" W	94°12'35"
C145	175.00'	171.24'	164.49'	S 20°01'40" E	56°03'50"
C146	225.00'	100.01'	99.19'	S 04°43'45" E	25°28'00"
C147	475.00'	105.03'	104.81'	N 00°05'10" E	12°40'06"
C148	525.00'	116.08'	115.84'	N 00°05'10" E	12°40'06"
C149	15.00'	23.56'	21.21'	S 38°45'07" W	90°00'00"
C150	15.00'	23.56'	21.21'	S 51°14'53" E	90°00'00"
C182	275.00'	150.82'	148.94'	N 80°32'10" W	31°25'27"

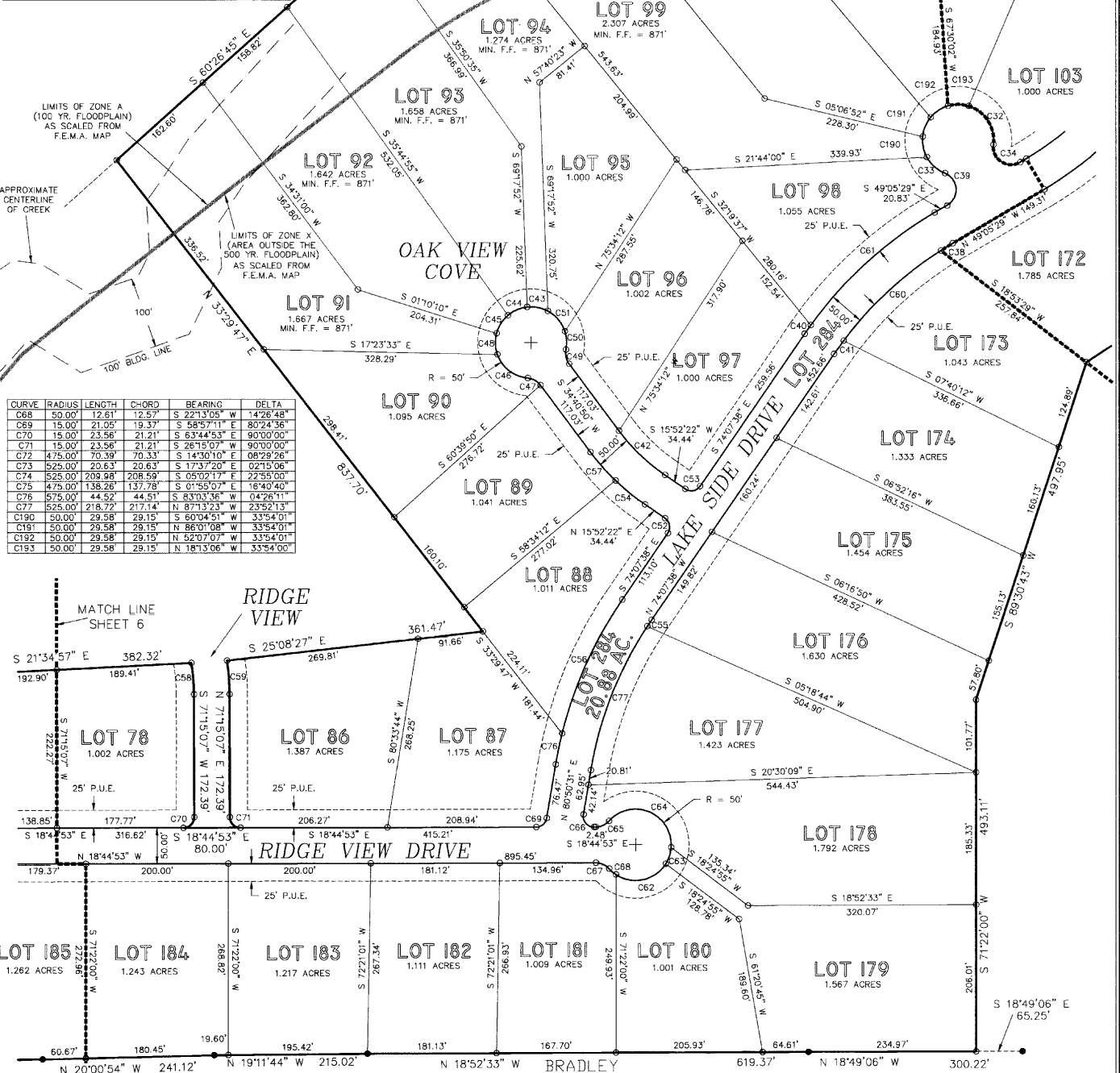
Cabinet S Side 223

BONNET
VOL. 515 PG. 639
476 ACRES
1301 CD. RD. 268 LIBERTY HILL TX.

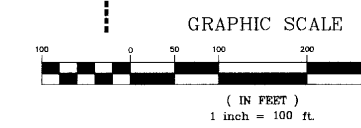
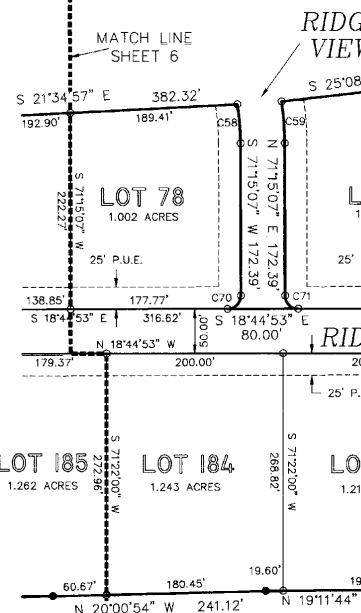
ALLEN
 DOC. NO. 9853414
 48.72 ACRES
 202 VILLAGE DRIVE
 GEORGETOWN TX. 78628

C32	50.00	69.74	64.22	N 38°41'17" E	79°54'47"
C33	50.00	34.87	34.17	S 23°09'06" W	39°57'29"
C34	25.00	55.74	44.89	S 14°46'36" W	127°44'09"
C35	425.00	236.53	233.49	S 63°09'08" E	33°33'53"
C36	425.00	68.71	68.64	N 88°10'09" E	09°15'47"
C37	475.00	174.91	173.93	S 85°54'54" E	21°05'55"
C38	525.00	19.41	19.40	N 50°09'01" W	02°07'04"
C39	25.00	55.74	44.89	N 67°02'26" E	127°44'09"
C40	575.00	14.71	14.71	N 73°23'59" W	34°22'39"
C41	925.00	23.02	23.02	N 72°52'15" W	02°30'46"
C42	275.00	90.27	89.87	S 25°16'56" W	184°28'29"
C43	50.00	30.00	29.55	N 07°40'46" W	34°22'39"
C44	50.00	30.00	29.55	N 42°03'25" W	34°22'39"
C45	50.00	30.00	29.55	N 76°28'04" W	34°22'39"
C46	50.00	57.17	54.10	S 19°14'43" W	65°30'30"
C47	25.00	21.03	20.41	N 10°35'09" E	48°11'23"
C48	50.00	30.00	29.55	S 69°11'17" W	34°22'39"
C49	25.00	21.03	20.41	S 58°46'32" W	48°11'23"
C50	50.00	26.01	25.72	N 67°58'07" E	01°09'38"
C51	50.00	38.01	37.10	N 31°17'17" E	43°33'26"
C52	15.00	23.56	21.21	N 60°52'22" E	90°00'00"
C53	15.00	23.56	21.21	S 28°07'38" E	90°00'00"
C54	325.00	53.34	53.28	S 20°34'29" W	09°24'14"
C55	525.00	10.63	10.63	N 74°42'23" W	01°09'38"
C56	575.00	206.68	205.57	N 84°25'28" W	20°35'40"
C57	325.00	53.34	53.28	S 29°58'43" W	09°24'14"
C58	275.00	44.44	44.39	N 66°37'20" E	09°15'54"
C59	325.00	47.45	47.41	N 67°04'09" E	08°21'55"
C60	525.00	186.97	185.99	N 67°24'43" W	20°22'19"
C61	575.00	236.54	234.87	N 60°52'35" W	23°34'12"
C62	50.00	80.08	71.79	S 30°53'09" E	91°45'40"
C63	50.00	24.35	24.11	N 89°17'04" E	27°53'54"
C64	50.00	124.16	94.63	N 04°11'55" E	142°16'23"
C65	25.00	21.03	20.41	S 42°50'35" E	48°11'23"
C66	15.00	26.07	22.91	S 31°02'49" W	99°35'24"
C67	25.00	21.03	20.41	N 05°20'48" E	48°11'23"

- LEGEND
 ● REBAR FOUND
 ○ REBAR SET
 ■ CONC. MONUMENT FOUND
 ▲ NAIL FOUND
 □ FENCE POST FOUND



CURVE	RADIUS	LENGTH	CHORD	BEARING	DELTA
C68	50.00	12.61	12.57	S 22°33'05" W	14°28'48"
C69	15.00	23.56	21.21	S 58°57'11" E	80°24'36"
C70	15.00	23.56	21.21	S 63°44'53" E	90°00'00"
C71	15.00	23.56	21.21	S 26°15'07" W	90°00'00"
C72	475.00	70.39	70.33	S 14°30'10" E	08°29'26"
C73	525.00	20.63	20.63	S 173°37'20" E	02°15'06"
C74	525.00	209.88	208.98	S 05°07'17" E	27°25'00"
C75	475.00	138.28	137.78	S 01°55'07" E	16°40'40"
C76	575.00	44.52	44.51	S 83°03'36" W	04°26'11"
C77	525.00	218.72	217.14	N 87°13'23" W	23°52'13"
C190	50.00	29.58	29.15	S 60°04'51" W	33°54'01"
C191	50.00	29.58	29.15	N 86°01'08" W	33°54'01"
C192	50.00	29.58	29.15	N 52°07'07" W	33°54'01"
C193	50.00	29.58	29.15	N 181°3'06" W	33°54'00"



BRADLEY
 VOL. 472 PG. 21
 176.83 ACRES
 RT. 4 BOX 99 GEORGETOWN TX. 78628

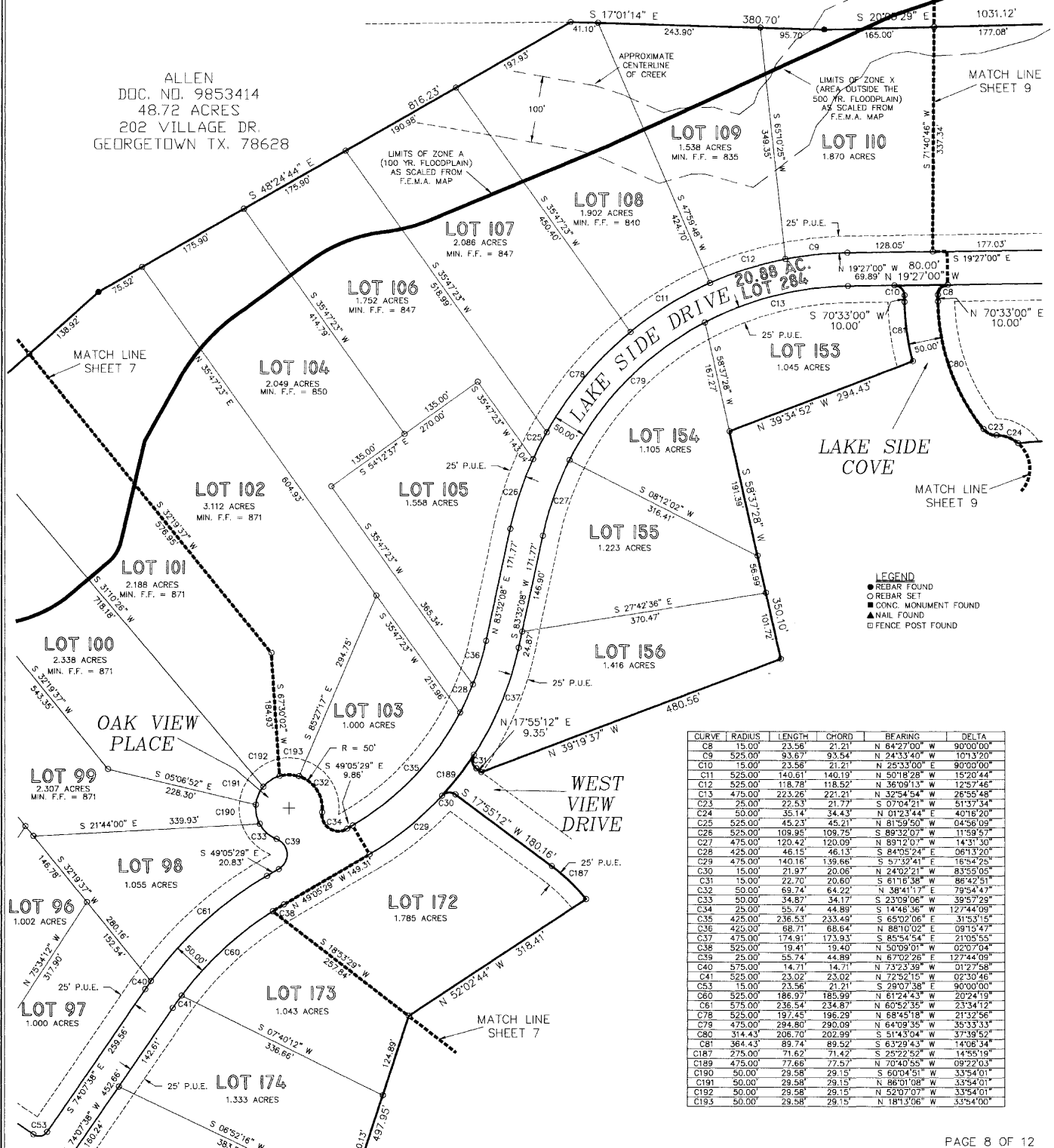
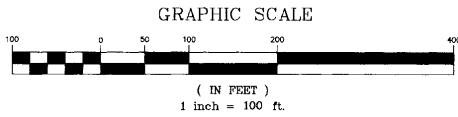
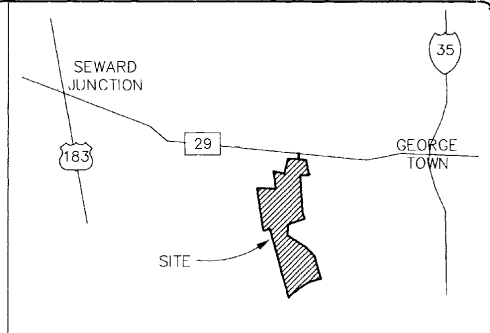
GABRIEL'S OVERLOOK—SECTION ONE
 A PRIVATE SUBDIVISION IN PERPETUITY
 (NOT TO BE MAINTAINED BY WILLIAMSON COUNTY)

Cabinet S Side 229

GABRIELS OVERLOOK-SECTION ONE

A PRIVATE SUBDIVISION IN PERPETUITY
(NOT TO BE MAINTAINED BY WILLIAMSON COUNTY)

LIVELY
VOL. 886 PG. 547
390.75 ACRES
6451 W. HWY. 29
GEORGETOWN TX. 78628

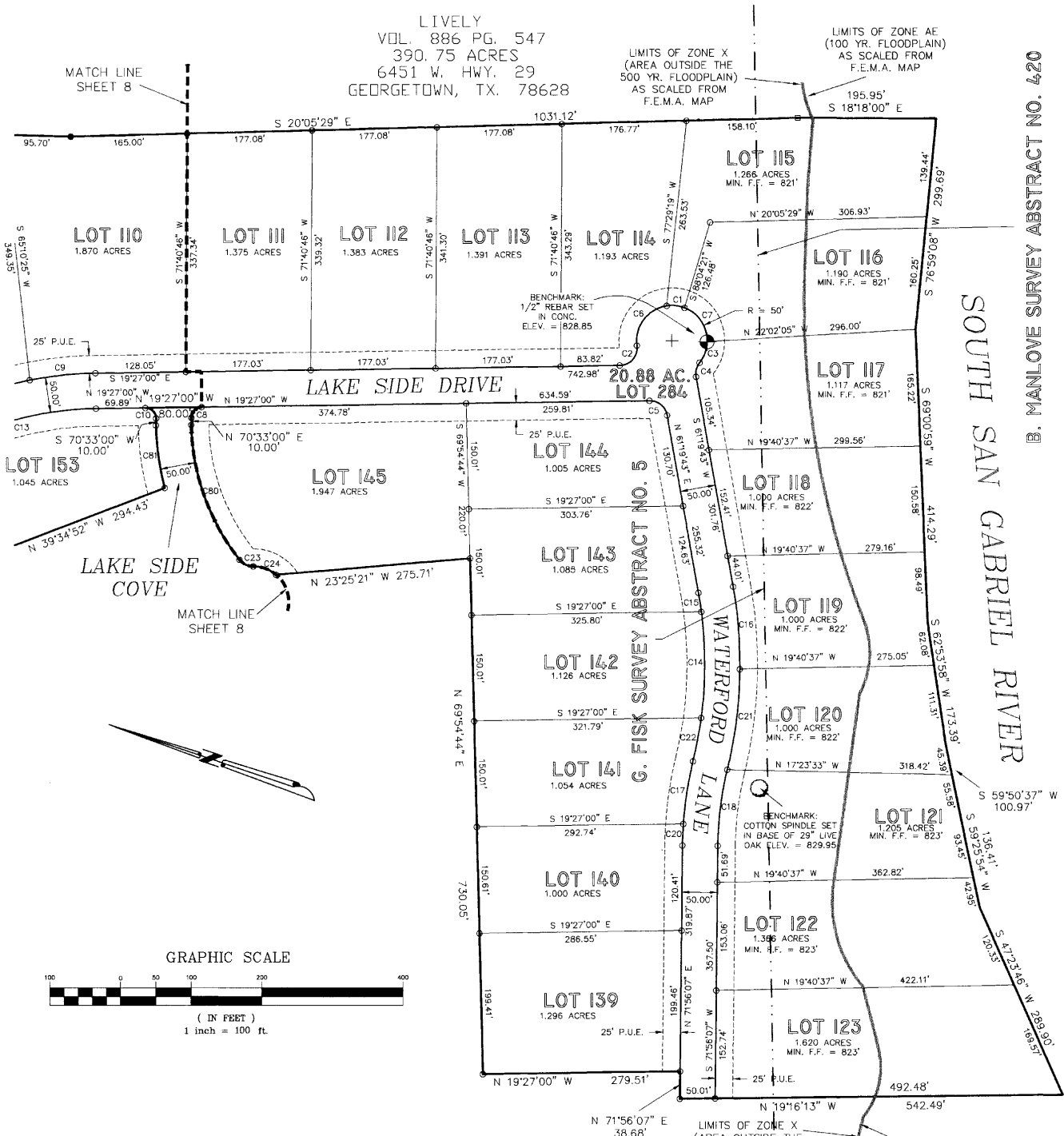


LEGEND
 ● REBAR FOUND
 ○ REBAR SET
 ■ CONC. MONUMENT FOUND
 ▲ NAIL FOUND
 □ FENCE POST FOUND

CURVE	RADIUS	LENGTH	CHORD	BEARING	DELTA
C8	15.00	23.56	21.21	N 64°27'00" W	90°00'00"
C9	525.00	93.87	93.54	N 24°33'40" W	10°13'20"
C10	15.00	23.56	21.21	N 25°33'00" E	90°00'00"
C11	525.00	140.61	140.19	N 50°18'28" W	15°20'44"
C12	525.00	118.78	118.52	N 36°09'13" W	12°57'46"
C13	475.00	223.26	221.21	N 32°54'54" W	26°55'48"
C23	25.00	22.83	21.77	S 07°04'21" W	51°37'34"
C24	50.00	35.14	34.43	N 01°23'44" E	40°16'20"
C25	525.00	45.23	45.21	N 81°59'50" W	04°56'09"
C26	525.00	109.95	109.75	S 89°32'07" W	11°59'57"
C27	475.00	120.42	120.09	N 83°32'01" W	14°31'30"
C28	425.00	46.15	46.13	S 84°05'24" E	06°13'20"
C29	475.00	140.16	139.66	S 57°32'41" E	16°54'25"
C30	15.00	21.97	20.06	N 24°02'21" W	83°55'05"
C31	15.00	22.70	20.60	S 61°16'38" W	86°42'51"
C32	475.00	69.74	64.22	N 38°41'17" E	79°54'47"
C33	50.00	34.87	34.17	S 23°09'06" W	39°57'29"
C34	25.00	55.74	44.89	S 14°46'36" W	127°44'09"
C35	425.00	236.53	233.49	S 65°02'06" E	31°53'15"
C36	425.00	68.71	68.64	N 86°10'02" E	09°15'47"
C37	475.00	174.91	173.93	S 85°54'54" E	21°05'55"
C38	525.00	19.41	19.40	N 50°09'01" W	02°07'04"
C39	25.00	55.74	44.89	N 67°02'26" E	127°44'09"
C40	575.00	14.71	14.71	N 73°23'39" W	01°27'58"
C41	525.00	23.02	23.02	N 72°52'15" W	02°30'46"
C43	15.00	23.56	21.21	N 29°07'36" E	90°00'00"
C60	525.00	186.97	185.99	N 61°24'43" W	20°24'19"
C61	575.00	236.54	234.87	N 60°52'35" W	23°34'12"
C78	525.00	197.45	196.29	N 68°45'18" W	21°32'56"
C79	475.00	294.80	290.09	N 64°09'35" W	35°33'33"
C80	314.43	206.70	202.99	S 51°43'04" W	37°59'52"
C81	364.43	89.74	89.52	S 63°29'43" W	14°06'34"
C187	275.00	71.62	71.42	S 25°22'52" W	14°55'19"
C189	475.00	77.66	77.57	N 70°40'55" W	09°22'03"
C190	50.00	29.58	29.15	S 60°04'51" W	33°54'01"
C191	50.00	29.58	29.15	N 86°01'08" W	33°54'01"
C192	50.00	29.58	29.15	N 52°07'07" W	33°54'01"
C193	50.00	29.58	29.15	N 18°13'06" W	33°54'00"

Cabinet S Side 225

LIVELY
VOL. 886 PG. 547
390.75 ACRES
6451 W. HWY. 29
GEORGETOWN, TX. 78628

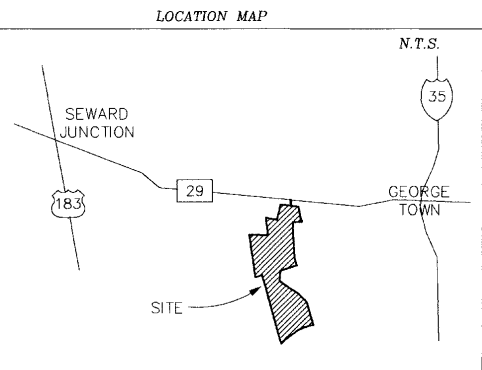


B. MANLOVE SURVEY ABSTRACT NO. 420

SOUTH SAN GABRIEL RIVER

Cabinet S Slide 22b

GABRIELS OVERLOOK SECTION ONE
A PRIVATE SUBDIVISION IN PERPETUITY
(NOT TO BE MAINTAINED BY WILLIAMSON COUNTY)



- LEGEND**
- REBAR FOUND
 - REBAR SET
 - CONC. MONUMENT FOUND
 - ▲ NAIL FOUND
 - FENCE POST FOUND
 - ⊕ BENCHMARK

CURVE	RADIUS	LENGTH	CHORD	BEARING	DELTA
C1	50.00'	25.70'	25.42'	N 12°18'21" W	29°28'51"
C2	25.00'	42.29'	37.42'	S 67°54'30" E	96°54'59"
C3	50.00'	31.86'	31.32'	S 88°44'05" E	36°30'21"
C4	25.00'	21.03'	20.41'	S 85°25'24" W	48°11'23"
C5	25.00'	35.25'	32.40'	N 20°56'21" E	80°48'43"
C6	50.00'	77.96'	70.30'	N 71°41'53" W	89°20'13"
C7	50.00'	61.61'	57.78'	N 37°42'55" E	70°35'40"
C8	15.00'	23.56'	21.21'	N 64°27'00" W	90°00'00"
C9	525.00'	93.67'	93.54'	N 24°33'40" W	10°13'20"
C10	15.00'	23.56'	21.21'	N 25°33'00" E	90°00'00"
C11	475.00'	223.26'	221.21'	N 32°44'54" W	28°55'48"
C14	580.36'	150.44'	150.02'	N 71°26'38" E	14°51'08"
C15	580.36'	27.24'	27.24'	N 62°40'24" E	02°41'22"
C16	630.36'	116.96'	116.79'	N 66°38'38" E	10°37'50"
C17	525.00'	89.97'	89.86'	S 80°08'53" W	09°49'01"
C18	475.00'	108.78'	108.55'	S 78°29'47" W	13°07'16"
C20	525.00'	30.27'	30.26'	S 73°35'13" W	03°18'12"
C21	630.36'	144.10'	143.79'	N 78°30'29" E	13°05'53"
C22	580.36'	62.67'	62.64'	N 81°57'49" E	06°11'14"
C23	25.00'	22.53'	21.77'	S 07°04'21" W	51°37'34"
C24	50.00'	35.14'	34.43'	N 01°23'44" E	40°16'20"
C80	314.43'	206.70'	202.99'	S 51°43'04" W	37°39'52"
C81	364.43'	89.74'	89.52'	S 63°29'43" W	14°06'34"

Cabinet S Side 228

GABRIELS OVERLOOK-SECTION ONE

A PRIVATE SUBDIVISION IN PREPPITY
(NOT TO BE MAINTAINED BY WILLIAMSON COUNTY)

FIELD NOTES
FIELD NOTES FOR 267,874.5 ACRES OUT OF THE GREENLEAF FISK SURVEY ABSTRACT NO. 5 AND THE BATHOLICINE MANUICK SURVEY ABSTRACT NO. 420 IN WILLIAMSON COUNTY, TEXAS BEING A PORTION OF A 449,985 ACRE TRACT CONVEYED TO 452 WILLIAMSON COUNTY, TEXAS BY DEED RECORDS OF WILLIAMSON COUNTY, TEXAS SAID TRACT BEING MORE PARTICULARLY DESCRIBED BY METES AND BOUNDS AS FOLLOWS:

Commencing at a 1/2" iron pin found at the Northwest corner of a 48,567 acre tract conveyed to Mound Trust in Vol. 908 Pg. 203 for the Northeast corner of said 449,985 acre tract.

THENCE with the West line of said 48,567 acre tract also being the East line of said 449,985 acre tract the following twelve (12) courses:

- 1) S 11° 47' 32" E, 32.85 feet to a 24" Live Oak.
- 2) S 20° 13' 15" E, 386.68 feet to a 1/2" iron pin set for the Northeast corner of this tract and the POINT OF BEGINNING.
- 3) S 20° 13' 15" E, 265.54 feet to a 1/2" rebar found at the base of a 21" Oak.
- 4) S 10° 56' 01" E, 298.64 feet to a 18" Post Oak.
- 5) S 17° 15' 55" E, 318.09 feet to a 1/2" rebar set on the side of a barn.
- 6) N 83° 37' 23" E, 410 feet to a 1/2" rebar set at the corner of said barn.
- 7) S 17° 28' 19" E, 88.21 feet to a steel fence post found.
- 8) S 47° 14' 00" E, 9.31 feet to a steel fence post found.
- 9) N 78° 14' 42" E, 41.15 feet to a 1/2" iron pin set.
- 10) S 13° 10' 00" E, 60.12 feet to a 1/2" iron pin set.
- 11) S 78° 40' 23" W, 41.53 feet to a steel fence post found.
- 12) S 11° 36' 55" E, 34.66 feet to an iron pin set on the North line of a 390.75 acre tract conveyed to Don Lively in Vol. 886 Pg. 547 of the Office Records of Williamson County, Texas also being the Southwest corner of said 48,567 acre tract.

THENCE with the North line of said 390.75 acre tract the following two (2) courses:

- 1) S 83° 43' 03" W, 68.16 feet to a 1/2" iron pin found.
 - 2) S 86° 30' 10" W, 538.07 feet to a 1/2" iron pin found at the Northwest corner of said 390.75 acre tract.
- THENCE with the fenced West line of said 390.75 acre tract and the East line of this tract the following seven (7) courses:
- 1) S 07° 18' 11" E, 328.31 feet to a 1/2" iron pin found.
 - 2) S 06° 57' 18" E, 783.46 feet to a 1/2" iron pin found.
 - 3) S 07° 27' 19" E, 838.98 feet to a 1/2" iron pin found.
 - 4) S 05° 40' 05" E, 458.92 feet to a 1/2" iron pin found.
 - 5) S 17° 59' 14" E, 302.52 feet to a 1/2" iron pin found.
 - 6) S 21° 54' 24" E, 229.27 feet to a 1/2" iron pin found.
 - 7) S 20° 42' 44" E, 430.05 feet to a P.K. nail found in a fence post at the Northeast corner of a Williamson County, Texas.

THENCE through the interior of said 449,985 acre tract the following three (3) courses:

- 1) N 18° 10' 52" W, 413.25 feet to a 1/2" rebar set at a point of non tangent curve to the right.
 - 2) With said curve to the right, whose elements are Delta = 11° 10' 16", R = 325.00', L = 63.37 and whose Chord bears S 34° 02' 01" W, 63.27 feet to a 1/2" rebar set.
 - 3) S 18° 10' 52" E, 377.50 feet to a 1/2" rebar set on the North line of said 48.72 acre tract.
- THENCE S 88° 22' 01" W with the North line of said 48.72 acre tract 709.22 feet to a 1/2" rebar set.
- THENCE through the interior of said 449,985 acre tract the following three (3) courses:
- 1) N 13° 15' 44" W, 227.23 feet to a 1/2" rebar set at a point of curve to the right.
 - 2) With said curve to the right, whose elements are Delta = 69° 08' 11", R = 503.00', L = 60.33 and whose Chord bears S 49° 31' 49" W, 581.74 feet to a 1/2" rebar set.
 - 3) S 13° 15' 44" E, 207.26 to a P.K. nail found in a fence post at the Northeast corner of said 48.72 acre tract.
- THENCE S 02° 03' 24" E with the West line of said 48.72 acre tract 731.77 feet to a point in a creek.
- THENCE through the interior of said 449,985 acre tract the following fourteen (14) courses:
- 1) N 59° 17' 15" W, 375.00 feet to a 1/2" rebar set.
 - 2) S 20° 47' 41" W, 217.26 feet to a 1/2" rebar set.
 - 3) S 09° 01' 21" E, 90.56 feet to a 1/2" rebar set.
 - 4) S 75° 44' 53" W, 111.83 feet to a 1/2" rebar set.
 - 5) S 21° 34' 57" E, 382.32 feet to a 1/2" rebar set at a point of curve to the right.
 - 6) With said curve to the right, whose elements are Delta = 09° 15' 34", R = 275.00', L = 44.44 and whose Chord bears S 66° 37' 20" W, 44.39 feet to a point of tangency.
 - 7) S 71° 15' 07" W, 172.39 feet to a 1/2" rebar set at a point of curve to the right.

- 8) With said curve to the right, whose elements are Delta = 90° 00' 00", R = 15.00', L = 23.56 and whose Chord bears N 63° 44' 53" W, 21.21 feet to a 1/2" rebar set.
- 9) S 18° 44' 53" E, 80.00 feet to a 1/2" rebar set at a point of curve to the right.
- 10) With said curve to the right, whose elements are Delta = 90° 00' 00", R = 15.00', L = 23.56 and whose Chord bears N 26° 15' 07" E, 21.21 feet to a 1/2" rebar set at a point of tangency.
- 11) N 71° 15' 07" E, 172.39 feet to a point of curve to the left.
- 12) With said curve to the left, whose elements are Delta = 08° 21' 55", R = 320.00', L = 47.45 and whose Chord bears N 67° 04' 09" E, 47.41 feet to a 1/2" rebar set.
- 13) S 25° 08' 27" E, 361.47 feet to a 1/2" rebar set.
- 14) N 33° 28' 47" E, 837.70 feet to a 1/2" rebar set on the Southwest line of said 48.72 acre tract.

THENCE with the Southwest line of said 48.72 acre tract the following two (2) courses:

- 1) S 60° 26' 45" E, 1201.22 feet to a 1/2" rebar found.
- 2) S 48° 24' 44" E, 816.23 feet to a point in a creek, also being on the West line of said 390.75 acre tract and the most Southerly corner of said 48.72 acre tract.

THENCE with the fenced West line of said 390.75 acre tract and the East line of this tract the following three courses:

- 1) S 17° 01' 14" E, 390.70 feet to a 1/2" iron pin found.
 - 2) S 20° 05' 29" E, 1031.12 feet to a fence post found.
 - 3) S 18° 18' 00" E, 195.95 feet to a point in the center of the South San Gabriel River for the Southwest corner of this tract.
- THENCE with the center of the South San Gabriel River as it exists today the following six (6) courses:
- 1) S 75° 59' 08" W, 289.69 feet to a point.
 - 2) S 69° 00' 59" W, 414.29 feet to a point.
 - 3) S 62° 53' 58" W, 173.39 feet to a point.
 - 4) S 59° 50' 37" W, 100.97 feet to a point.
 - 5) S 59° 25' 54" W, 136.41 feet to a point.
 - 6) S 47° 23' 46" W, 289.90 feet to a point for the Southwest corner of this tract.

THENCE through the interior of said 449,985 acre tract the following twenty six (26) courses:

- 1) N 19° 18' 13" W, 542.49 feet to a 1/2" rebar set.
- 2) N 71° 56' 07" E, 386.68 feet to a 1/2" rebar set.
- 3) N 19° 27' 00" W, 279.51 feet to a 1/2" rebar set.
- 4) N 69° 54' 44" E, 730.05 feet to a 1/2" rebar set.
- 5) N 23° 25' 21" W, 275.71 feet to a 1/2" rebar set at a point of curve to the left.
- 6) With said curve to the left, whose elements are Delta = 40° 16' 20", R = 50.00', L = 35.41 and whose Chord bears N 07° 22' 44" E, 34.43 feet to a 1/2" rebar set at a point of reverse curve to the right.
- 7) With said curve to the right, whose elements are Delta = 51° 37' 34", R = 25.00', L = 22.52 and whose Chord bears N 07° 04' 21" E, 21.77 feet to a 1/2" rebar set.
- 8) With said curve to the right, whose elements are Delta = 37° 39' 57", R = 314.43', L = 205.70 and whose Chord bears N 57° 43' 04" E, 202.99 feet to a 1/2" rebar set.
- 9) N 70° 33' 00" E, 10.00 feet to a 1/2" rebar set at a point of curve to the right.
- 10) With said curve to the right, whose elements are Delta = 90° 00' 00", R = 15.00', L = 23.56 and whose Chord bears S 64° 27' 00" E, 21.21 feet to a 1/2" rebar set.
- 11) N 19° 27' 00" W, 80.00 feet to a 1/2" rebar set at a point of curve to the right.
- 12) With said curve to the right, whose elements are Delta = 90° 00' 00", R = 15.00', L = 23.56 and whose Chord bears S 25° 33' 00" W, 21.21 feet to a 1/2" rebar set at a point of tangency.
- 13) S 70° 33' 00" W, 10.00 feet to a 1/2" rebar set at a point of curve to the left.
- 14) With said curve to the left, whose elements are Delta = 14° 06' 34", R = 364.43', L = 89.74 and whose Chord bears S 63° 29' 43" W, 89.52 feet to a 1/2" rebar set.
- 15) N 39° 34' 52" W, 294.43 feet to a 1/2" rebar set.
- 16) S 98° 37' 28" W, 350.10 feet to a 1/2" rebar set.
- 17) N 39° 19' 37" W, 480.56 feet to a 1/2" rebar set.
- 18) N 17° 55' 12" E, 9.35 feet to a 1/2" rebar set at a point of curve to the right.
- 19) With said curve to the right, whose elements are Delta = 86° 42' 51", R = 15.00', L = 22.70 and whose Chord bears N 61° 16' 38" E, 20.60 feet to a 1/2" rebar set at a point of curve to the right.
- 20) With said curve to the right, whose elements are Delta = 09° 23' 03", R = 475.00', L = 77.66 and whose Chord bears N 70° 40' 55" W, 77.57 feet to a 1/2" rebar set at a point of curve to the right.
- 21) With said curve to the right, whose elements are Delta = 63° 55' 05", R = 15.00', L = 21.97 and whose Chord bears S 24° 02' 21" E, 20.05 feet to a 1/2" rebar set.
- 22) S 17° 55' 12" W, 180.16 feet to a 1/2" rebar set at a point of curve to the right.
- 23) With said curve to the right, whose elements are Delta = 14° 55' 19", R = 275.00', L = 71.62 and whose Chord bears S 25° 22' 52" W, 71.42 feet to a 1/2" rebar set.
- 24) N 52° 02' 44" W, 318.41 feet to a 1/2" rebar set.

- 25) With said curve to the right, whose elements are Delta = 90° 00' 00", R = 15.00', L = 23.56 and whose Chord bears N 63° 44' 53" W, 21.21 feet to a 1/2" rebar set.
 - 26) S 71° 22' 00" W, 493.31 feet to a 1/2" rebar set on the East line of a 176.83 acre tract conveyed to Brody in Volume 472 Page 21 Deed Records of Williamson County, Texas.
 - 27) S 89° 30' 43" W, 497.95 feet to a 1/2" rebar set.
- THENCE with the fenced East line of said Brody tract and West line of this tract the following seven (7) courses:
- 1) N 18° 49' 06" W, 234.97 feet to a 1/2" iron pin found.
 - 2) N 18° 52' 33" W, 619.37 feet to a 1/2" iron pin found.
 - 3) N 19° 11' 44" W, 215.02 feet to a 1/2" iron pin found.
 - 4) N 20° 00' 34" W, 241.12 feet to a 1/2" iron pin found.
 - 5) N 19° 44' 29" W, 539.45 feet to a 1/2" iron pin found.
 - 6) N 19° 34' 51" W, leaving said fence, 255.36 feet to a 1/2" iron pin set.
 - 7) N 20° 52' 51" W, 58.50 feet to a 1/2" iron pin set for the Northeast corner of said Brody tract.

THENCE with the North line of said Brody tract the following two (2) courses:

- 1) S 69° 40' 11" W, 56.04 feet to a 1/2" iron pin found at a fence P.I.
- 2) S 69° 30' 20" W with said fence, 408.84 feet to an iron pin found at a fence corner being on the North line of said Brody tract conveyed to Bonnet in Volume 515 Page 532 Deed Records of Williamson County, Texas.

THENCE N 12° 17' 49" W with the fenced East line of said 476 acre tract 475.00 feet to a 1/2" rebar set.

THENCE through the interior of said 449,985 acre tract the following fifty four (54) courses:

- 1) S 29° 19' 46" E, 483.61 feet to a 1/2" rebar set.
- 2) S 18° 38' 00" E, 183.69 feet to a 1/2" rebar set.
- 3) S 67° 45' 07" E, 367.82 feet to a 1/2" rebar set.
- 4) N 06° 40' 26" E, 447.68 feet to a 1/2" rebar set.
- 5) N 83° 45' 07" E, 118.00 feet to a 1/2" rebar set at a point of curve to the right.
- 6) With said curve to the right, whose elements are Delta = 90° 00' 00", R = 15.00', L = 23.56 and whose Chord bears S 51° 14' 53" E, 21.21 feet to a 1/2" rebar set.
- 7) N 06° 14' 53" W, 80.00 feet to a 1/2" rebar set at a point of curve to the right.
- 8) With said curve to the right, whose elements are Delta = 90° 00' 00", R = 15.00', L = 23.56 and whose Chord bears S 38° 45' 07" W, 21.21 feet to a 1/2" rebar set.
- 9) S 83° 45' 07" W, 118.00 feet to a point of curve to the right.
- 10) With said curve to the right, whose elements are Delta = 31° 25' 27", R = 275.00', L = 150.82 and whose Chord bears N 60° 32' 10" W, 146.34 feet to a 1/2" rebar set.
- 11) N 04° 26' 46" E, 391.98 feet to a 1/2" rebar set.
- 12) S 87° 10' 55" W, 28.71 feet to a 1/2" rebar set.
- 13) N 02° 43' 30" E, 295.94 feet to a 1/2" rebar set at a point of curve to the left.
- 14) With said curve to the left, whose elements are Delta = 04° 46' 55", R = 375.00', L = 31.19 and whose Chord bears N 71° 13' 28" E, 31.18 feet to a 1/2" rebar set.
- 15) N 68° 50' 31" E, 67.52 feet to a 1/2" rebar set at a point of curve to the right.
- 16) With said curve to the right, whose elements are Delta = 82° 37' 36", R = 15.00', L = 21.63 and whose Chord bears S 69° 50' 41" E, 19.81 feet to a 1/2" rebar set at a point of curve to the left.
- 17) With said curve to the left, whose elements are Delta = 02° 13' 00", R = 975.00', L = 87.22 and whose Chord bears N 29° 38' 23" W, 377.22 feet to a 1/2" rebar set.
- 18) N 30° 44' 53" W, 43.86 feet to a 1/2" rebar set at a point of curve to the right.
- 19) With said curve to the right, whose elements are Delta = 99° 35' 24", R = 15.00', L = 28.07 and whose Chord bears S 19° 02' 49" W, 22.91 feet to a 1/2" rebar set.
- 20) S 68° 50' 31" W, 54.73 feet to a 1/2" rebar set at a point of curve to the right.
- 21) With said curve to the right, whose elements are Delta = 23° 55' 33", R = 320.00', L = 135.72 and whose Chord bears S 80° 48' 17" W, 134.73 feet to a 1/2" rebar set.
- 22) N 12° 21' 36" W, 349.45 feet to a 1/2" rebar set.
- 23) S 80° 29' 01" W, 174.30 feet to a 1/2" rebar set.
- 24) N 29° 57' 58" W, 229.09 feet to a 1/2" rebar set.
- 25) N 11° 55' 27" W, 212.03 feet to a 1/2" rebar set.
- 26) N 57° 51' 51" W, 72.11 feet to a 1/2" rebar set.
- 27) N 32° 33' 53" E, 164.18 feet to a 1/2" rebar set.
- 28) N 85° 52' 10" E, 155.00 feet to a 1/2" rebar set.
- 29) N 04° 07' 56" W, 297.49 feet to a 1/2" rebar set at a point of curve to the right.
- 30) With said curve to the right, whose elements are Delta = 21° 13' 56", R = 475.00', L = 176.02 and whose Chord bears S 60° 38' 25" E, 176.02 feet to a 1/2" rebar set at a point of compound curve to the right.

