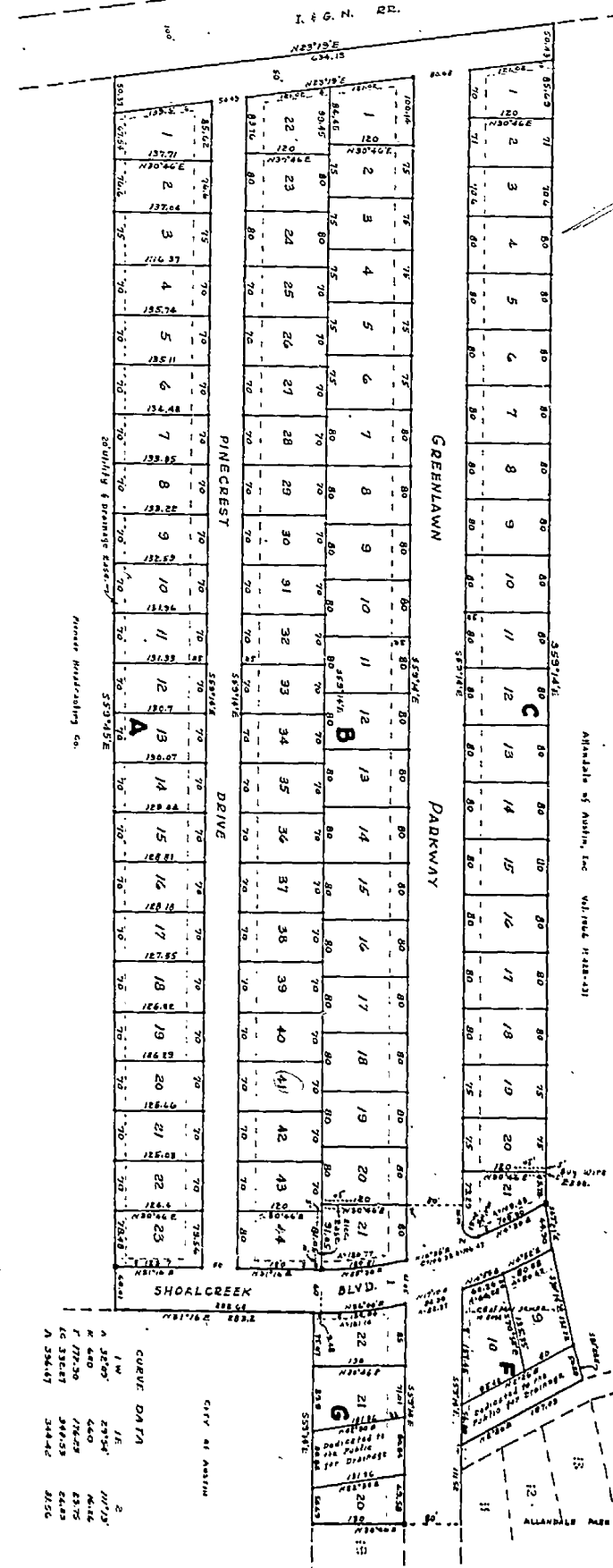


# ALLANDALE PARK SECTION 2



APPROVED FOR ACCEPTANCE:  
 DATE NOVEMBER 1958, *Emilie Limberg, Clerk*  
 City of Austin, Texas, this 12th day of November 1958.

ACCEPTED AND AUTHORIZED FOR RECORD  
 BY THE CITY PLANNING COMMISSION OF  
 AUSTIN, TEXAS, this 12th day of November  
 1958.  
*David B. Brown* Chairman  
*William J. Johnson* Secretary

STATE OF TEXAS }  
 COUNTY OF TRAVIS } I, Miss Emilie Limberg, Clerk of the County Court within and for the County  
 and State aforesaid do hereby certify that the foregoing instrument of writing with its certifi-  
 cate of authentication was filed for record in my office on the 24th day of Nov. A.D. 1958 at  
 10:35 o'clock A.M. and duly recorded on the 24th day of Nov. A.D. 1958 at 10:40 o'clock A.M. in  
 the plat records of said County in Book 9, Page 26.

Witness My Hand and Seal of the County Court of said County on the 14th day of November above.  
 Miss Emilie Limberg, Clerk County Court, Travis County, Texas  
 (SEAL) BY: *Edwin Pruitt* Deputy

SCALE: 1" = 100'  
 1" = 100 feet  
 1" = 100 feet  
 1" = 100 feet

STATE OF TEXAS }  
 COUNTY OF TRAVIS } I, Miss Emilie Limberg, County Clerk of Travis County, Texas, do hereby  
 certify that on the 24th day of Nov. A.D. 1958, the Commissioner's Court of Travis County, Texas  
 passed an order authorizing the filing for record of this plat and that said order has  
 been duly entered in the minutes of said Court in Book 3, Page 326.

Witness my hand and seal of office this 24th day of Nov. A.D. 1958  
 Miss Emilie Limberg, County Clerk, Travis County, Texas  
 (SEAL) BY: *O. R. Anderson* Deputy

STATE OF TEXAS }  
 COUNTY OF TRAVIS } I, Miss Emilie Limberg, County Clerk of Travis County, Texas, do hereby  
 certify that on the 24th day of Nov. A.D. 1958, the Commissioner's Court of Travis County, Texas  
 passed an order authorizing the filing for record of this plat and that said order has  
 been duly entered in the minutes of said Court in Book 3, Page 326.

Witness my hand and seal of office this 24th day of Nov. A.D. 1958  
 Miss Emilie Limberg, County Clerk, Travis County, Texas  
 (SEAL) BY: *O. R. Anderson* Deputy

STATE OF TEXAS }  
 COUNTY OF TRAVIS } I, Miss Emilie Limberg, County Clerk of Travis County, Texas, do hereby  
 certify that on the 24th day of Nov. A.D. 1958, the Commissioner's Court of Travis County, Texas  
 passed an order authorizing the filing for record of this plat and that said order has  
 been duly entered in the minutes of said Court in Book 3, Page 326.

For Subdivision agree per Vol. 2092, Page 249, and Miss  
 Emilie Limberg, C. C. C.  
 For Restrictions see Vol. 2046, pg 219 and Record  
 Emilie Limberg, C. C. C.