



PLAT MAP RECORDING SHEET

DEDICATOR(s):

INTERMANDECO GP LLC
BROOKLANDS PARTNERS LTD

SUBDIVISION NAME: BROOKLANDS SECTION ONE

PROPERTY IS DESCRIBED AS: 17.6704 ACRES WILLIAM GATLIN SURVEY NO
23 ABSTRACT NO 271

SUBMITTED BY: CITY OF HUTTO

DIGITALLY RECORDED

FILED AND RECORDED

OFFICIAL PUBLIC RECORDS 2019042618

PLAT Fee: \$241.00
05/17/2019 08:35 AM BMCKENZIE

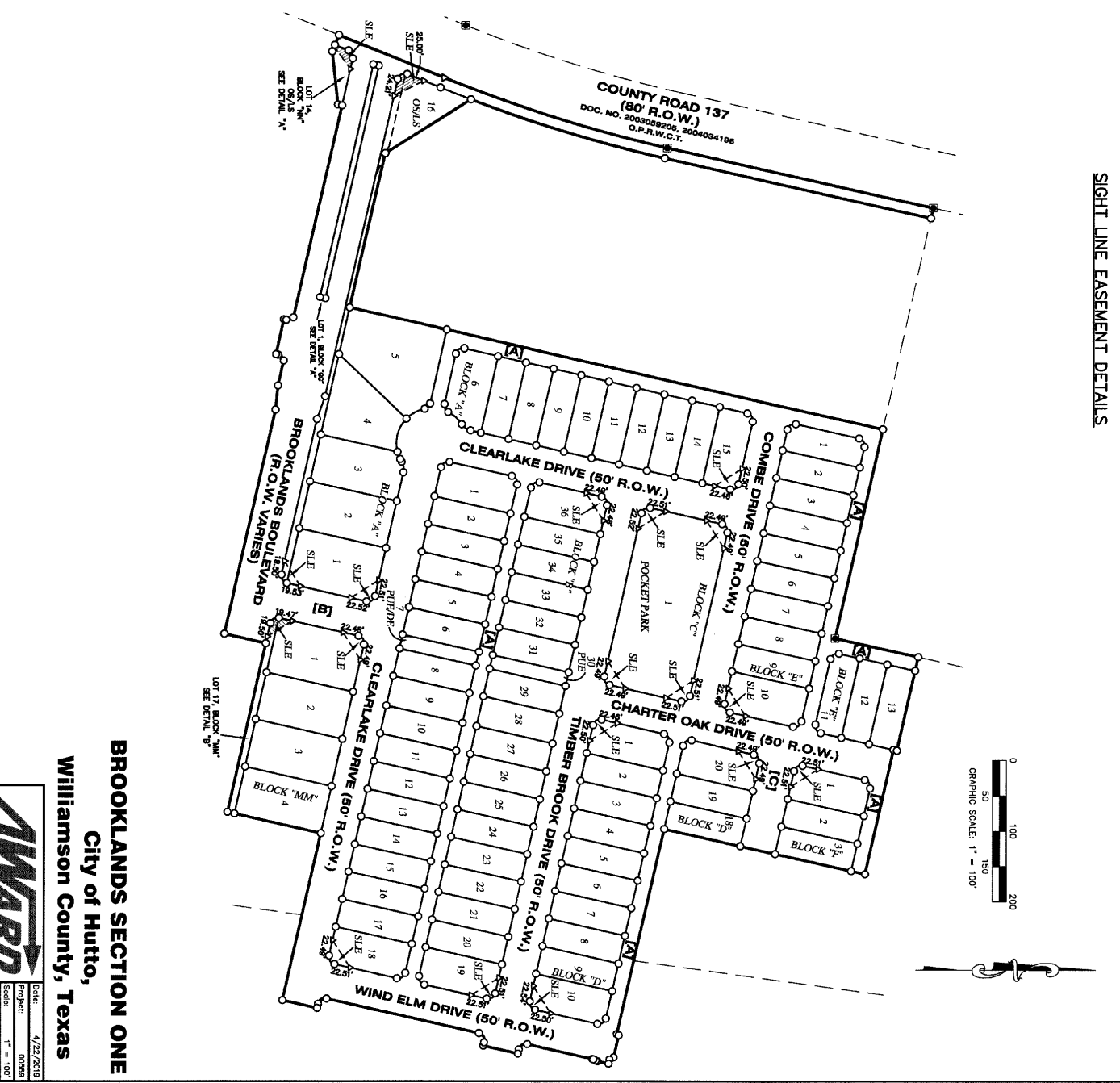


Nancy E. Rister

Nancy E. Rister, County Clerk
Williamson County, Texas

SIGHT LINE EASEMENT DETAILS

CURVE #	LENGTH	RADIUS	DELTA	BEARING	DISTANCE
C1	285.46'	2,085.00'	73°55'	S16°45'53"W	285.46'
C2	15.70'	10.00'	89°57'17"	S57°48'07"W	14.14'
C3	15.71'	10.00'	90°02'07"	N32°11'55"W	14.15'
C4	11.40'	10.00'	65°30'08"	S44°53'12"E	10.80'
C5	91.21'	50.00'	104°31'28"	S64°08'53"E	79.08'
C6	15.60'	20.00'	44°24'45"	N80°37'01"E	15.12'
C7	15.72'	10.00'	90°02'43"	S32°11'53"E	14.15'
C8	15.70'	10.00'	89°57'17"	S57°48'07"W	14.14'
C9	17.33'	10.00'	99°18'19"	N27°34'08"W	15.24'
C10	45.97'	2,085.00'	1°18'54"	N21°23'19"E	45.97'
C11	28.78'	50.00'	34°07'29"	S28°58'54"E	29.34'
C12	50.58'	50.00'	57°57'24"	S74°59'20"E	48.45'
C13	10.86'	50.00'	1°29'35"	N69°48'40"E	10.84'
C14	15.72'	10.00'	90°02'43"	S32°11'53"E	14.15'
C15	15.60'	20.00'	44°24'45"	S35°01'58"W	15.12'
C16	28.08'	50.00'	28°52'51"	S42°17'57"W	25.78'
C17	13.33'	10.00'	75°48'08"	S64°05'25"W	12.29'
C18	15.72'	10.00'	90°03'27"	N32°11'52"W	14.15'
C19	15.70'	10.00'	89°56'53"	N57°48'28"E	14.14'
C20	15.70'	10.00'	89°57'17"	N57°48'07"E	14.14'
C21	15.72'	10.00'	90°02'43"	S32°11'53"E	14.15'
C22	15.70'	10.00'	89°57'17"	S57°48'07"W	14.14'
C23	15.72'	10.00'	90°02'43"	N32°11'53"W	14.15'
C24	15.72'	10.00'	90°02'43"	N32°11'53"W	14.15'
C25	15.70'	10.00'	89°57'17"	N57°48'07"E	14.14'
C26	15.72'	10.00'	90°02'43"	N32°11'53"W	14.15'
C27	15.70'	10.00'	89°57'17"	N57°48'07"E	14.14'
C28	15.72'	10.00'	90°02'43"	S32°11'53"E	14.15'
C29	15.70'	10.00'	89°57'17"	S57°48'07"W	14.14'
C30	15.72'	10.00'	90°02'43"	S32°11'53"E	14.15'
C31	15.70'	10.00'	89°57'17"	S57°48'07"W	14.14'
C32	15.70'	10.00'	89°57'17"	S57°48'07"W	14.14'
C33	15.72'	10.00'	90°02'43"	N32°11'53"W	14.15'
C34	15.72'	10.00'	90°02'43"	N32°11'53"W	14.15'
C35	15.70'	10.00'	89°57'17"	N57°48'07"E	14.14'
C36	15.72'	10.00'	90°02'43"	S32°11'53"E	14.15'
C37	15.70'	10.00'	89°57'17"	S57°48'07"W	14.14'
C38	15.72'	10.00'	90°02'43"	S32°11'53"E	14.15'
C39	15.70'	10.00'	89°57'17"	S57°48'07"W	14.14'
C40	15.72'	10.00'	90°03'27"	N32°11'52"W	14.15'
C41	15.70'	10.00'	89°57'17"	N57°48'47"E	14.14'
C42	15.71'	10.00'	90°02'07"	S32°11'55"E	14.15'
C43	15.72'	10.00'	90°02'43"	N32°11'53"W	14.15'
C44	15.70'	10.00'	89°57'17"	N57°48'07"E	14.14'
C45	15.72'	10.00'	90°02'43"	N32°11'53"W	14.15'
C46	12.67'	4.00'	161°25'25"	S72°46'45"W	8.00'
C47	12.87'	4.00'	181°25'25"	N12°46'45"E	8.00'
C48	14.08'	10.00'	80°41'41"	N82°25'54"E	12.85'
C49	15.70'	10.00'	89°57'17"	N57°48'07"E	14.14'
C50	15.70'	10.00'	89°57'53"	S57°48'25"W	14.14'
C51	15.72'	10.00'	90°02'19"	S32°11'58"E	14.15'
C52	15.70'	10.00'	89°57'17"	S57°48'07"W	14.14'
C53	15.72'	10.00'	90°02'33"	S32°11'53"E	14.15'
C54	11.90'	10.00'	68°10'22"	S46°51'56"W	11.21'
C55	11.20'	10.00'	64°09'29"	N19°18'00"W	10.62'
C56	3.21'	5.03'	36°53'02"	N31°06'59"E	3.16'
C57	7.37'	5.03'	84°01'29"	S29°11'16"E	6.73'
C58	2.82'	10.00'	159°07'00"	S20°19'28"W	2.81'
C59	1.31'	5.00'	159°00'00"	S20°19'28"W	1.31'



BROOKLANDS SECTION ONE
 City of Hutto,
 Williamson County, Texas

WARD
 Land Surveying
 P.O. Box 20878 Austin, Texas 78720
 WWW.AWARDLANDSURVEYING.COM (512) 537-2384
 TEXAS FIRM #01742400

Date: 4/22/2018
 Project: 00569
 Scale: 1" = 100'
 Reviewer: SNO
 TCR: JF
 Field Crew: T/SR
 Survey Date: FEB. 2017
 Sheet: 2 OF 3

