

PLAT MAP RECORDING SHEET

INSTRUMENT #--

DEDICATOR-- Del Webb Texas Limited Partnership

SUBDIVISION NAME-- SUN CITY GEORGETOWN, PHASE 2, NEIGHBORHOOD 10

MAP RECORDED IN CABINET 0, SLIDES 230, 231, 232, 233, 234, 235, 236  
& 237

PROPERTY FORMERLY KNOWN AS: 99.104 ac. R. T. Jenkins Sy, A 360, Isaac Jones  
y, A 361, Abner Short Sy, A 598, W.C. Wilkinson Sy, A 671, George Thompson  
Sy, A 792 (Document #9639931)

HAND TO: Carol Embry of Del Webb 930-6782 ( Charge Sun City Title )

INSTRUMENT DATE: May 5, 1997

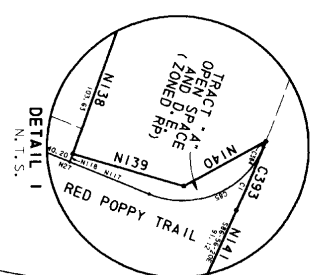
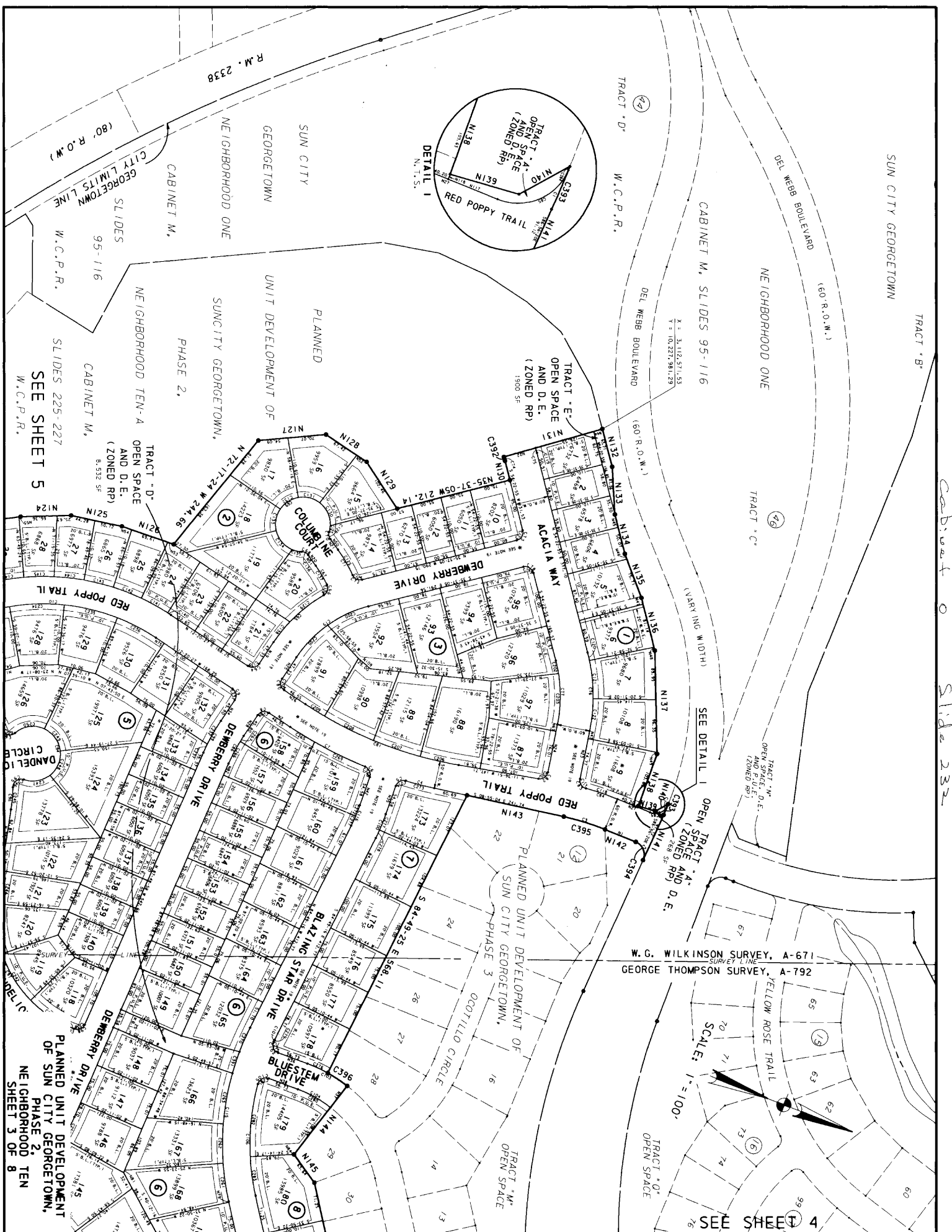
FILE DATE: June 3, 1997

Doc# 9725129  
# Pages: 8  
Date : 06-06-1997  
Time : 03:12:20 P.M.  
Filed & Recorded in  
Official Records  
of WILLIAMSON County, T.  
ELAINE BIZZELL  
COUNTY CLERK  
Rec. \$ 231.00

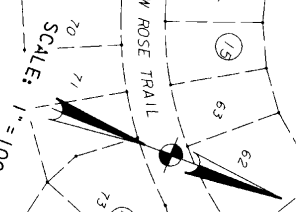
OFFICIAL RECORDS  
WILLIAMSON COUNTY, TEXAS







Cabinet 0 Slide 232



W. G. WILKINSON SURVEY, A-671  
 GEORGE THOMPSON SURVEY, A-792

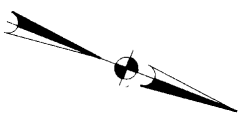
SEE SHEET 4

SEE SHEET 5

PLANNED UNIT DEVELOPMENT OF SUN CITY GEORGETOWN, NEIGHBORHOOD TEN SHEET 3 OF 8



SCALE: 1" = 100'



SEE SHEET 3  
PLANNED

UNIT DEVELOPMENT OF  
SUNCITY GEORGETOWN,  
PHASE 2,

NEIGHBORHOOD TEN-A

CABINET M.,  
SLIDES 225-227

TRACT - D\*  
OPEN SPACE  
AND D.E.  
(ZONED RP)  
8,532 SF

GEORGETOWN  
CITY LIMITS LINE  
SLIDES  
95-116  
W.C.P.R.

W.C.P.R.  
ISSAC JONES SURVEY, A-361  
SURVEY LINE

GEORGETOWN  
CITY LIMITS LINE

TRACT - B\*  
OPEN SPACE, D.E.  
AND P.U.E.  
(ZONED RP)  
3,524 SF

W.D. ISCHY  
CALLED 6.25 ACRE TRACT  
VOLUME 836, PAGE 887  
O.R.W.C.T.

GEORGETOWN  
CITY LIMITS LINE

ISSAC JONES SURVEY, A-361  
SURVEY LINE  
GEORGE THOMPSON SURVEY, A-792

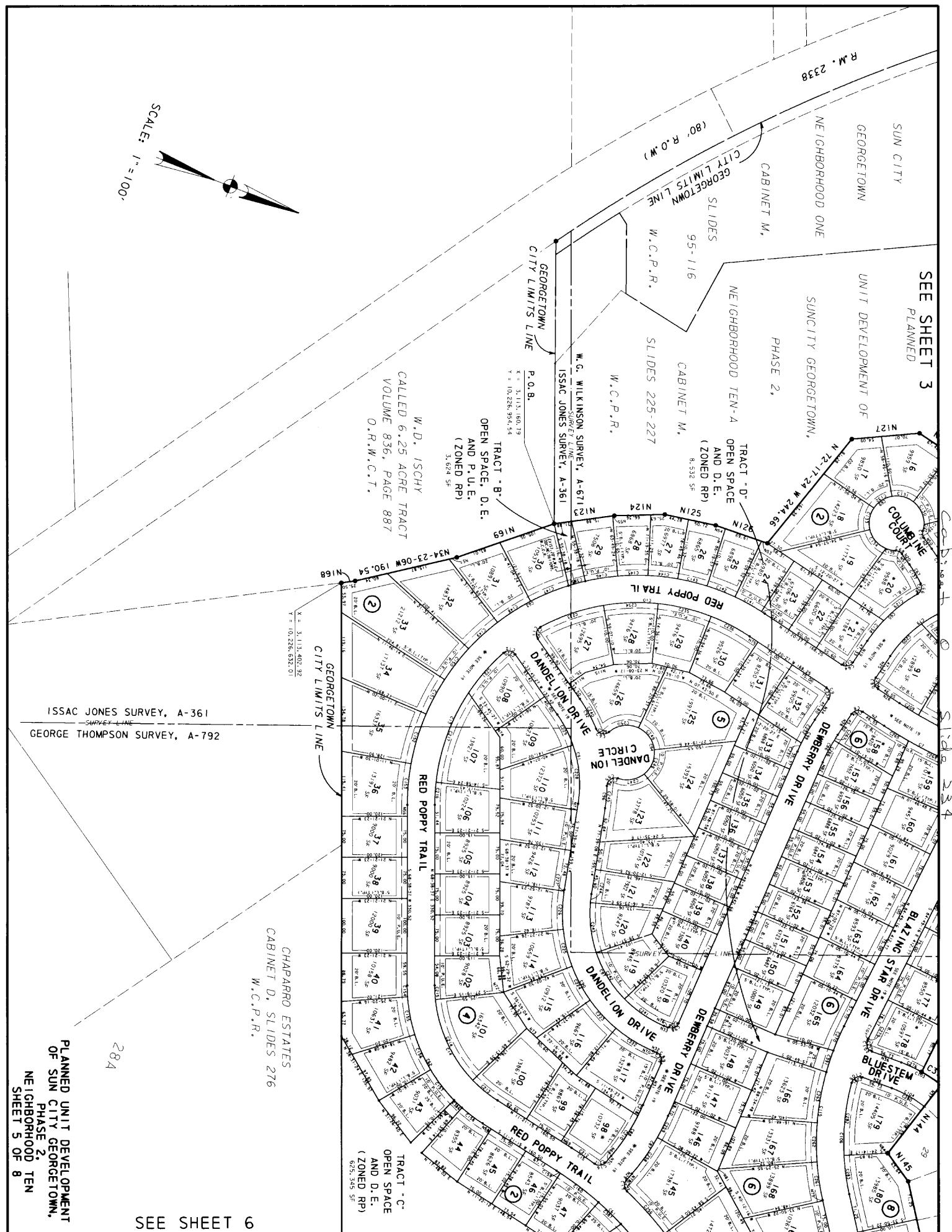
CHAPARRO ESTATES  
CABINET D, SLIDES 276  
W.C.P.R.

TRACT - C\*  
OPEN SPACE  
AND D.E.  
(ZONED RP)  
625,345 SF

SEE SHEET 6

PLANNED UNIT DEVELOPMENT  
OF SUN CITY GEORGETOWN,  
PHASE 2, TEN  
NEIGHBORHOOD  
SHEET 5 OF 8

284



SEE SHEET 5

TRACT - C  
OPEN SPACE  
AND D. E.  
(ZONED RP)  
6251, 545 SF

GEORGE THOMPSON  
SURVEY, A-792  
SURVEY LINE  
ABNER SHORT  
SURVEY, A-598

S 68-38-37 W 3500.46

GEORGETOWN  
CITY LIMITS LINE

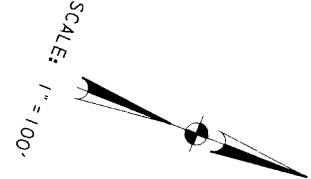
100-YEAR FLOOD PLAIN  
SEE NOTE 9

100-YEAR FLOOD PLAIN  
SEE NOTE 9

TRACT - C  
OPEN SPACE  
AND D. E.  
(ZONED RP)  
6251, 545 SF

CHAPARRO ESTATES  
CABINET D, SLIDES 276  
W.C.P.R.

CHAPARRO ESTATES  
CABINET D, SLIDES 276  
W.C.P.R.



PLANNED UNIT DEVELOPMENT  
OF SUN CITY GEORGETOWN,  
PHASE 2,  
NEIGHBORHOOD TEN  
SHEET 6 OF 8

SEE SHEET 7

28B

26B

26C

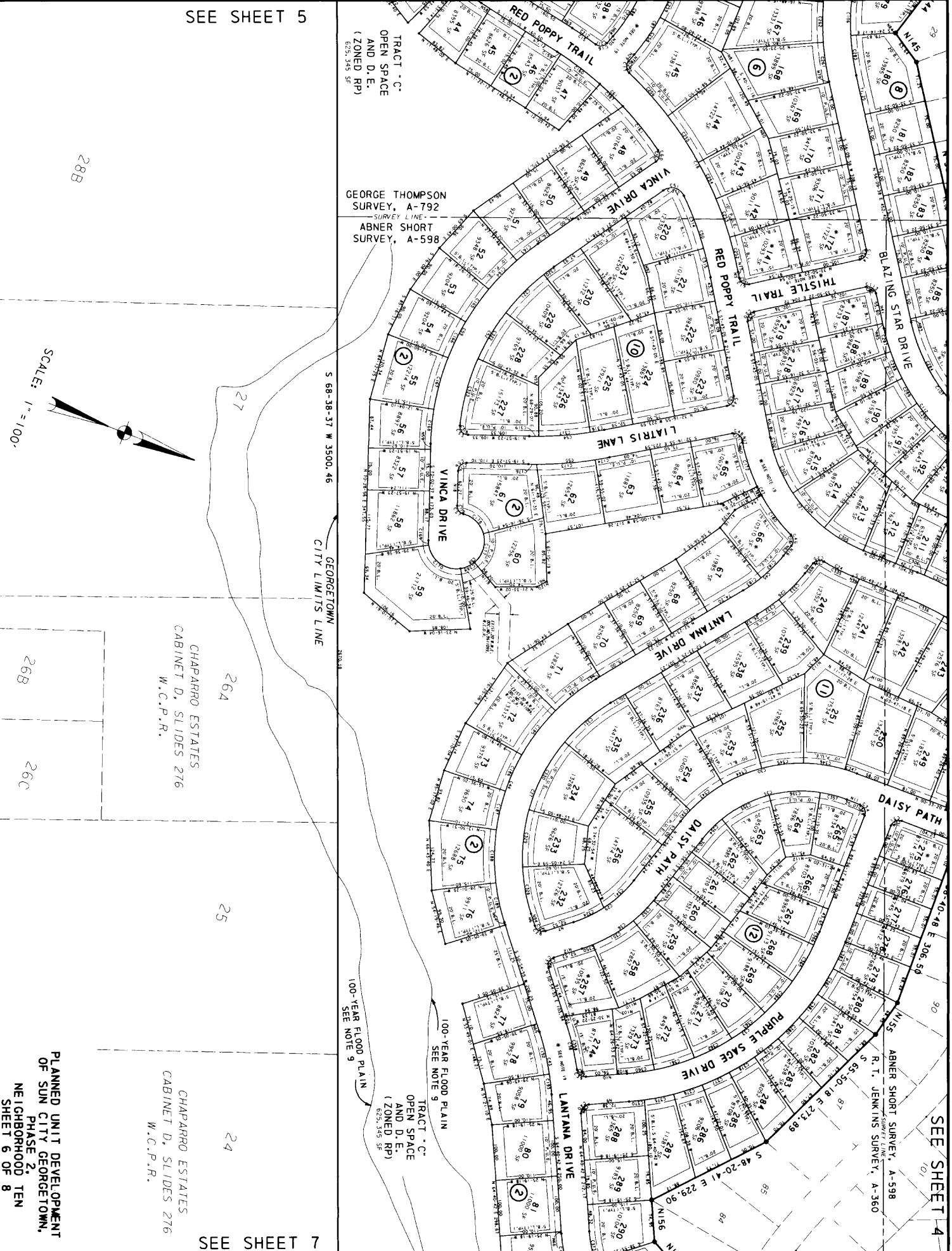
264

25

24

SEE SHEET 4

Slide 235



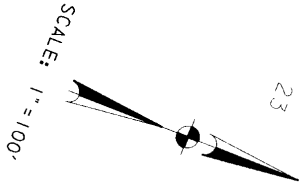
SEE SHEET 6

CHAPARRO ESTATES  
CABINET D. SLIDES 276  
W.C.P.R.

24

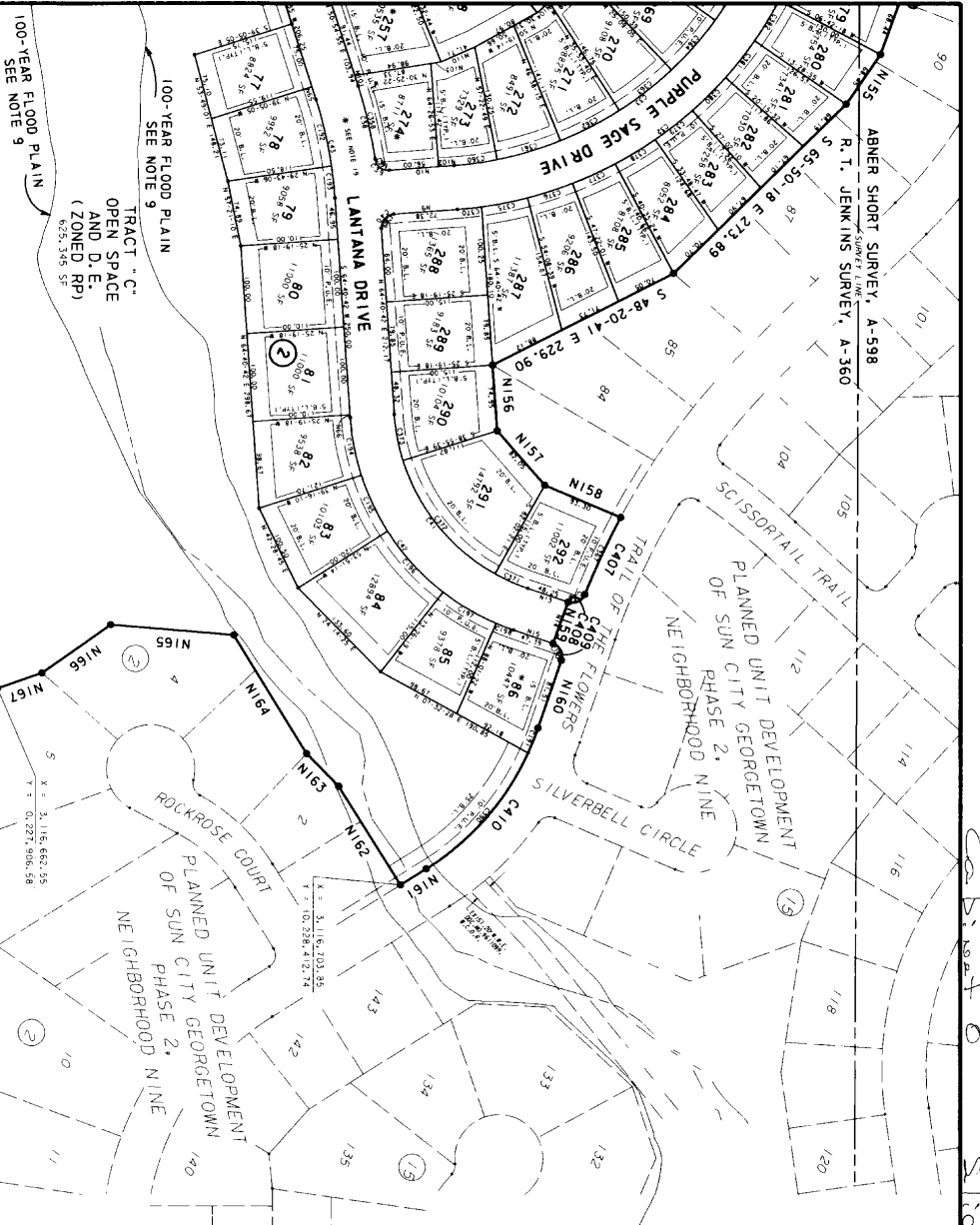
23

22



SCALE: 1" = 100'

GEORGETOWN  
CITY LIMITS LINE



TRACT "C"  
OPEN SPACE  
LAND D.E.  
(ZONED RP)  
652.318 SQ. FT.

100-YEAR FLOOD PLAIN  
SEE NOTE 9

100-YEAR FLOOD PLAIN  
SEE NOTE 9

X = 3,116, 662.55  
Y = 0,227, 906.58

| NOTE | NOTE TABLE |               |       | NOTE | NOTE TABLE |               |       |
|------|------------|---------------|-------|------|------------|---------------|-------|
|      | DISTANCE   | BEARING       | DELTA |      | DISTANCE   | BEARING       | DELTA |
| 1    | 60.34      | S 0° 47' 15W  |       | 100  | 13.59      | N 11° 17' 28E |       |
| 2    | 46.55      | S 12° 20' 57W |       | 101  | 12.49      | N 65° 54' 55E |       |
| 3    | 10.42      | N 51° 43' 05E |       | 102  | 17.71      | N 62° 33' 07W |       |
| 4    | 10.42      | S 72° 12' 20W |       | 103  | 18.25      | N 63° 52' 39W |       |
| 5    | 22.87      | S 72° 12' 20E |       | 104  | 10.42      | N 63° 52' 39W |       |
| 6    | 22.31      | N 65° 54' 55E |       | 105  | 18.09      | N 71° 54' 58W |       |
| 7    | 52.53      | N 83° 00' 05W |       | 106  | 18.09      | N 71° 54' 58W |       |
| 8    | 52.53      | S 23° 53' 07E |       | 107  | 44.00      | N 52° 22' 55E |       |
| 9    | 72.38      | S 23° 53' 07E |       | 108  | 44.00      | N 52° 22' 55E |       |
| 10   | 173.71     | N 25° 33' 07E |       | 109  | 29.00      | S 71° 25' 48W |       |
| 11   | 25.07      | S 0° 00' 43E  |       | 110  | 41.71      | N 45° 00' 51W |       |
| 12   | 48.25      | S 0° 00' 43E  |       | 111  | 45.14      | N 45° 00' 51W |       |
| 13   | 50.07      | N 68° 31' 28E |       | 112  | 45.14      | N 45° 00' 51W |       |
| 14   | 47.39      | N 68° 31' 28E |       | 113  | 48.33      | N 68° 08' 39W |       |
| 15   | 47.39      | S 2° 27' 16E  |       | 114  | 35.10      | N 58° 28' 02W |       |
| 16   | 22.97      | N 72° 16' 15W |       | 115  | 54.54      | N 58° 28' 02W |       |
| 17   | 62.27      | N 70° 02' 37E |       | 116  | 5.00       | S 0° 24' 15W  |       |
| 18   | 47.33      | N 71° 39' 31W |       | 117  | 2.44       | S 88° 22' 08W |       |
| 19   | 23.89      | S 32° 53' 48W |       | 118  | 58.20      | N 23° 34' 38E |       |
| 20   | 23.89      | S 32° 53' 48W |       | 119  | 58.20      | N 23° 34' 38E |       |
| 21   | 42.00      | N 71° 33' 47W |       | 120  | 58.20      | N 23° 34' 38E |       |
| 22   | 42.00      | N 71° 33' 47W |       | 121  | 58.20      | N 23° 34' 38E |       |
| 23   | 88.14      | N 71° 56' 02E |       | 122  | 41.16      | S 71° 33' 38E |       |
| 24   | 88.14      | S 71° 56' 02E |       | 123  | 110.90     | N 23° 00' 46W |       |
| 25   | 46.33      | S 71° 56' 02W |       | 124  | 91.99      | N 23° 39' 43W |       |
| 26   | 46.33      | S 71° 56' 02W |       | 125  | 91.99      | N 23° 39' 43W |       |
| 27   | 64.35      | N 0° 47' 15E  |       | 126  | 100.00     | N 2° 11' 35W  |       |
| 28   | 49.80      | S 71° 59' 31E |       | 127  | 124.16     | N 2° 11' 35W  |       |
| 29   | 15.58      | S 70° 56' 40E |       | 128  | 189.21     | N 12° 26' 55E |       |
| 30   | 82.62      | N 87° 48' 58W |       | 129  | 189.21     | N 12° 26' 55E |       |
| 31   | 7.95       | S 2° 11' 02W  |       | 130  | 186.55     | S 52° 22' 58W |       |
| 32   | 7.95       | S 2° 11' 02W  |       | 131  | 186.55     | S 52° 22' 58W |       |
| 33   | 7.95       | N 2° 11' 02E  |       | 132  | 71.37      | N 53° 03' 13E |       |
| 34   | 49.90      | N 81° 58' 39E |       | 133  | 81.56      | N 53° 03' 13E |       |
| 35   | 56.73      | N 0° 51' 55W  |       | 134  | 85.71      | N 47° 58' 39E |       |
| 36   | 56.73      | N 0° 51' 55W  |       | 135  | 85.71      | N 47° 58' 39E |       |
| 37   | 50.00      | S 71° 59' 31E |       | 136  | 99.59      | N 81° 18' 38E |       |
| 38   | 56.73      | S 0° 51' 55E  |       | 137  | 181.15     | N 81° 18' 38E |       |
| 39   | 56.73      | S 0° 51' 55E  |       | 138  | 181.15     | N 81° 18' 38E |       |
| 40   | 50.00      | S 54° 55' 35E |       | 139  | 32.69      | N 5° 04' 48W  |       |
| 41   | 64.24      | S 56° 09' 38W |       | 140  | 26.51      | N 50° 04' 47W |       |
| 42   | 54.58      | S 51° 58' 07E |       | 141  | 91.12      | S 86° 54' 70E |       |
| 43   | 14.38      | S 51° 58' 07E |       | 142  | 181.07     | S 86° 54' 70E |       |
| 44   | 14.38      | S 51° 58' 07E |       | 143  | 181.07     | S 86° 54' 70E |       |
| 45   | 74.50      | N 54° 22' 55E |       | 144  | 158.55     | S 71° 26' 40E |       |
| 46   | 10.00      | N 47° 58' 39E |       | 145  | 63.68      | N 32° 46' 02E |       |
| 47   | 12.16      | N 47° 58' 39E |       | 146  | 112.87     | N 32° 46' 02E |       |
| 48   | 2.81       | N 67° 29' 17E |       | 147  | 112.87     | N 32° 46' 02E |       |
| 49   | 2.81       | N 67° 29' 17E |       | 148  | 105.76     | N 32° 46' 02E |       |
| 50   | 27.89      | S 32° 53' 48W |       | 149  | 105.76     | N 32° 46' 02E |       |
| 51   | 27.89      | S 32° 53' 48W |       | 150  | 150.00     | N 32° 46' 02E |       |
| 52   | 11.11      | S 2° 11' 35E  |       | 151  | 55.54      | S 53° 55' 35E |       |
| 53   | 11.11      | S 2° 11' 35E  |       | 152  | 50.00      | S 53° 55' 35E |       |
| 54   | 18.77      | S 2° 11' 35E  |       | 153  | 50.00      | S 53° 55' 35E |       |
| 55   | 3.15       | S 29° 00' 46E |       | 154  | 112.58     | S 88° 24' 32E |       |
| 56   | 20.34      | N 81° 21' 16E |       | 155  | 112.58     | S 88° 24' 32E |       |
| 57   | 18.38      | N 81° 21' 16E |       | 156  | 58.45      | S 71° 00' 45E |       |
| 58   | 9.86       | N 70° 02' 37E |       | 157  | 58.45      | S 71° 00' 45E |       |
| 59   | 5.72       | N 70° 02' 37E |       | 158  | 82.09      | N 27° 21' 3E  |       |
| 60   | 5.72       | N 70° 02' 37E |       | 159  | 82.09      | N 27° 21' 3E  |       |
| 61   | 5.72       | N 70° 02' 37E |       | 160  | 50.01      | N 88° 31' 29E |       |
| 62   | 8.03       | S 52° 23' 29E |       | 161  | 50.01      | N 88° 31' 29E |       |
| 63   | 8.03       | S 52° 23' 29E |       | 162  | 132.00     | S 32° 09' 40W |       |
| 64   | 5.00       | N 65° 54' 55E |       | 163  | 51.94      | S 32° 09' 40W |       |
| 65   | 15.00      | N 65° 54' 55E |       | 164  | 132.00     | S 32° 09' 40W |       |
| 66   | 15.00      | N 65° 54' 55E |       | 165  | 132.00     | S 32° 09' 40W |       |
| 67   | 12.80      | N 71° 56' 02E |       | 166  | 95.00      | S 58° 31' 46E |       |
| 68   | 15.58      | S 70° 56' 40E |       | 167  | 25.50      | S 46° 46' 32E |       |
| 69   | 22.25      | S 71° 21' 05W |       | 168  | 25.50      | S 46° 46' 32E |       |
| 70   | 11.66      | S 71° 33' 08W |       | 169  | 189.06     | N 62° 40' 41W |       |
| 71   | 11.66      | S 71° 33' 08W |       |      |            |               |       |
| 72   | 1.58       | S 55° 59' 04W |       |      |            |               |       |
| 73   | 724.97     | S 27° 16' 19W |       |      |            |               |       |
| 74   | 18.25      | N 17° 20' 27E |       |      |            |               |       |
| 75   | 7.85       | S 2° 11' 02W  |       |      |            |               |       |
| 76   | 10.42      | S 21° 43' 05W |       |      |            |               |       |
| 77   | 10.42      | S 21° 43' 05W |       |      |            |               |       |
| 78   | 15.58      | N 62° 06' 40W |       |      |            |               |       |
| 79   | 23.22      | S 48° 12' 16W |       |      |            |               |       |
| 80   | 4.76       | N 88° 34' 48W |       |      |            |               |       |
| 81   | 4.76       | N 88° 34' 48W |       |      |            |               |       |
| 82   | 23.00      | N 87° 48' 58W |       |      |            |               |       |
| 83   | 5.00       | N 87° 48' 58W |       |      |            |               |       |
| 84   | 8.64       | N 65° 03' 38E |       |      |            |               |       |
| 85   | 18.07      | N 25° 05' 43E |       |      |            |               |       |
| 86   | 18.07      | N 25° 05' 43E |       |      |            |               |       |
| 87   | 18.07      | N 25° 05' 43E |       |      |            |               |       |
| 88   | 18.07      | N 25° 05' 43E |       |      |            |               |       |
| 89   | 18.07      | N 25° 05' 43E |       |      |            |               |       |
| 90   | 14.31      | N 5° 02' 00E  |       |      |            |               |       |
| 91   | 5.88       | N 14° 20' 48E |       |      |            |               |       |
| 92   | 5.88       | N 14° 20' 48E |       |      |            |               |       |
| 93   | 14.32      | N 14° 32' 50W |       |      |            |               |       |
| 94   | 22.31      | S 50° 54' 55W |       |      |            |               |       |
| 95   | 22.31      | S 50° 54' 55W |       |      |            |               |       |
| 96   | 12.45      | N 0° 45' 27E  |       |      |            |               |       |
| 97   | 12.45      | N 0° 45' 27E  |       |      |            |               |       |
| 98   | 10.42      | N 25° 05' 43E |       |      |            |               |       |
| 99   | 7.82       | N 47° 19' 48W |       |      |            |               |       |

PLANNED UNIT DEVELOPMENT  
OF SUN CITY GEORGETOWN,  
PHASE 2, TEN  
NEIGHBORHOOD  
SHEET 7 OF 8

Cabinet 0 Slide 230

Main data table with columns: NOTE, ARC LENGTH, DELTA, CURVE TABLE (RADIUS, CHORD, DISTANCE), CHORD BEARING, CHORD DISTANCE, NOTE, ARC LENGTH, DELTA, CURVE TABLE (RADIUS, CHORD, DISTANCE), CHORD BEARING, CHORD DISTANCE, NOTE, ARC LENGTH, DELTA, CURVE TABLE (RADIUS, CHORD, DISTANCE), CHORD BEARING, CHORD DISTANCE.

Station 237

PLANNED UNIT DEVELOPMENT OF SUN CITY DEVELOPMENT, PHASE 2, NEIGHBORHOOD TEN SHEET 8 OF 8

**PLAT MAP RECORDING SHEET**

**INSTRUMENT #--**

**DOC# 9864029**

**DEDICATOR-- DEL WEBB TEXAS LIMITED PARTNERSHIP, (DEL WEBB)  
DEL WEBB SOUTHWEST CO.**

**SUBDIVISION NAME-- SUN CITY GEORGETOWN PHASE 2, NEIGHBORHOOD TEN, AMENDED  
PLAT OF PLANNED UNIT DEVELOPMENT**

**MAP RECORDED IN CABINET-- CABINET Q SLIDE 193, 194, 195, 196, 197, 198, 199  
& 200**

**PROPERTY FORMERLY KNOWN AS 99.104 ACRES IN THE R. T. JENKINS SURVEY,  
ABSTRACT 360, ISAAC JONES SURVEY, ABSTRACT 361, ABNER SHORT SURVEY, ABSTRACT  
598, W. G. WILKINSON SURVEY, ABSTRACT 792, AS RECORDED IN DOCUMENT NOS.  
9558175, 9558176, 9558177 AND 9657904.**

**HAND TO: CITY OF GEORGETOWN  
(JIM 930-2535)  
CHARGED TO SUN CITY Title**

**INSTRUMENT DATE: OCTOBER 8, 1998**

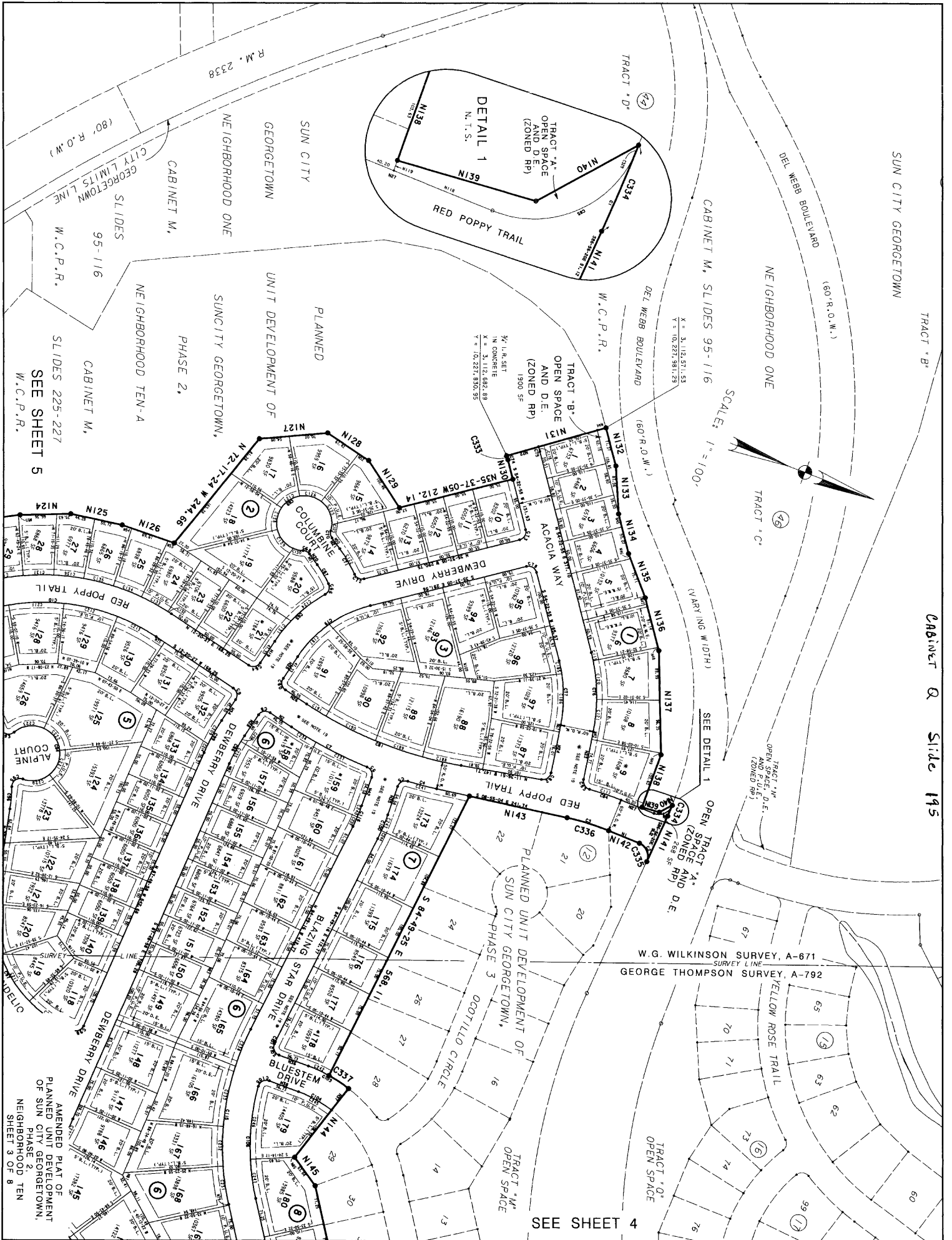
**FILE DATE: NOVEMBER 2, 1998**

**Doc# 9864029  
# Pages: 8  
Date : 11-02-1998  
Time : 09:10:37 A.M.  
Filed & Recorded in  
Official Records  
of WILLIAMSON County, TX.  
NANCY E. RISTER  
COUNTY CLERK  
Rec. \$ 236.00**

**OFFICIAL RECORDS  
WILLIAMSON COUNTY, TEXAS**







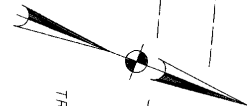
SEE SHEET 5  
 SLIDES 225-227  
 CABINET M,  
 W.C.P.R.

AMENDED PLAT OF  
 PLANNED UNIT DEVELOPMENT  
 OF SUN CITY GEORGETOWN,  
 PHASE 2,  
 NEIGHBORHOOD TEN  
 SHEET 3 OF 8

SEE SHEET 4

W.G. WILKINSON SURVEY, A-671  
 SURVEY LINE  
 GEORGE THOMPSON SURVEY, A-792

SCALE: 1" = 100'



TRACT "B"  
 OPEN SPACE  
 AND D.E.  
 (ZONED RP)  
 1900 SF  
 1/4" I.R. SET  
 IN CONCRETE  
 T = 31,112,892.89  
 T = 10,227,830.95

TRACT "A"  
 OPEN SPACE  
 AND D.E.  
 (ZONED RP)  
 1588 SF  
 1/4" I.R. SET  
 IN CONCRETE  
 T = 31,112,892.89  
 T = 10,227,830.95

TRACT "M"  
 OPEN SPACE  
 AND P.U.E.  
 (ZONED RP)  
 1588 SF

TRACT "O"  
 OPEN SPACE

TRACT "M"  
 OPEN SPACE

DETAIL 1  
 N.T.S.  
 TRACT "A"  
 OPEN SPACE  
 (ZONED RP)

CABINET Q Slide 195

SUN CITY GEORGETOWN

NEIGHBORHOOD ONE

CABINET M, SLIDES 95-116

DEL WEBB BOULEVARD

(60' R.O.W.)

TRACT "B"

DEL WEBB BOULEVARD

(60' R.O.W.)

W.C.P.R.

(VARYING WIDTH)

SEE DETAIL 1

TRACT "A"  
 OPEN SPACE  
 AND D.E.  
 (ZONED RP)  
 1588 SF

YELLOW ROSE TRAIL

(70)

(71)

(72)

(73)

(74)

(76)

(77)

(79)

(80)

(82)

(83)

(85)

(86)

(87)

(89)

(90)

(91)

(92)

(93)

(94)

(95)

(96)

(97)

(98)

(99)

(100)

(101)

(102)

(103)

(104)

(105)

(106)

(107)

(108)

(109)

(110)

(111)

(112)

(113)

(114)

(115)

(116)

(117)

(118)

(119)

(120)

(121)

(122)

(123)

(124)

(125)

(126)

(127)

(128)

(129)

(130)

(131)

(132)

(133)

(134)

(135)

(136)

(137)

(138)

(139)

(140)

(141)

(142)

(143)

(144)

(145)

(146)

(147)

(148)

(149)

(150)

(151)

(152)

(153)

(154)

(155)

(156)

(157)

(158)

(159)

(160)

(161)

(162)

(163)

(164)

(165)

(166)

(167)

(168)

(169)

(170)

(171)

(172)

(173)

(174)

(175)

(176)

(177)

(178)

(179)

(180)

(181)

(182)

(183)

(184)

(185)

(186)

(187)

(188)

(189)

(190)

(191)

(192)

(193)

(194)

(195)

(196)

(197)

(198)

(199)

(200)

SEE SHEET 3

TRACT "O"  
OPEN SPACE

GEORGE THOMPSON SURVEY, A-792  
SURVEY LINE  
ABNER SHORT SURVEY, A-598

PLANNED UNIT DEVELOPMENT OF  
SUN CITY GEORGETOWN,  
PHASE 3  
TRACT "R"  
OPEN SPACE

CABINET Q Slide 196

SUN CITY GEORGETOWN

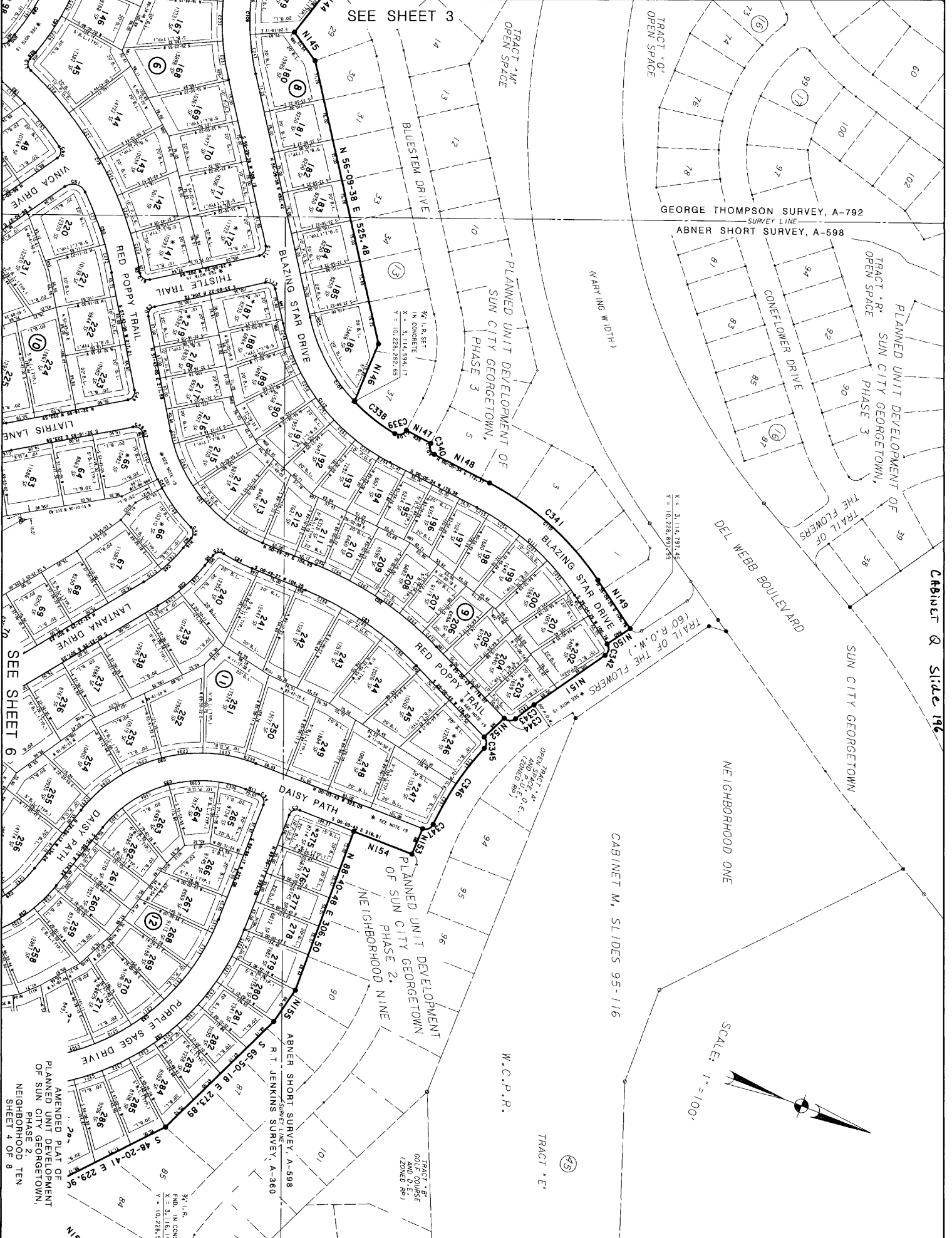
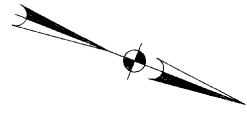
NEIGHBORHOOD ONE

CABINET M, SLIDES 95-116

W.C.P.R.

TRACT "E"

SCALE: 1" = 100'



SEE SHEET 6

AMENDED PLAT OF  
PLANNED UNIT DEVELOPMENT  
OF SUN CITY GEORGETOWN,  
NEIGHBORHOOD TEN  
SHEET 4 OF 8

TRACT "B"  
GOLF COURSE  
(ZONED RP)  
3/4 I.R. SET  
FIND. IN CONG.  
X = 101,285.2  
Y = 101,285.2

TRACT "M"  
OPEN SPACE  
3/4 I.R. SET  
FIND. IN CONG.  
X = 101,285.2  
Y = 101,285.2

TRACT "N"  
OPEN SPACE  
3/4 I.R. SET  
FIND. IN CONG.  
X = 101,285.2  
Y = 101,285.2

TRACT "O"  
OPEN SPACE  
3/4 I.R. SET  
FIND. IN CONG.  
X = 101,285.2  
Y = 101,285.2

TRACT "P"  
OPEN SPACE  
3/4 I.R. SET  
FIND. IN CONG.  
X = 101,285.2  
Y = 101,285.2

TRACT "R"  
OPEN SPACE  
3/4 I.R. SET  
FIND. IN CONG.  
X = 101,285.2  
Y = 101,285.2

TRACT "S"  
OPEN SPACE  
3/4 I.R. SET  
FIND. IN CONG.  
X = 101,285.2  
Y = 101,285.2

TRACT "T"  
OPEN SPACE  
3/4 I.R. SET  
FIND. IN CONG.  
X = 101,285.2  
Y = 101,285.2

TRACT "U"  
OPEN SPACE  
3/4 I.R. SET  
FIND. IN CONG.  
X = 101,285.2  
Y = 101,285.2

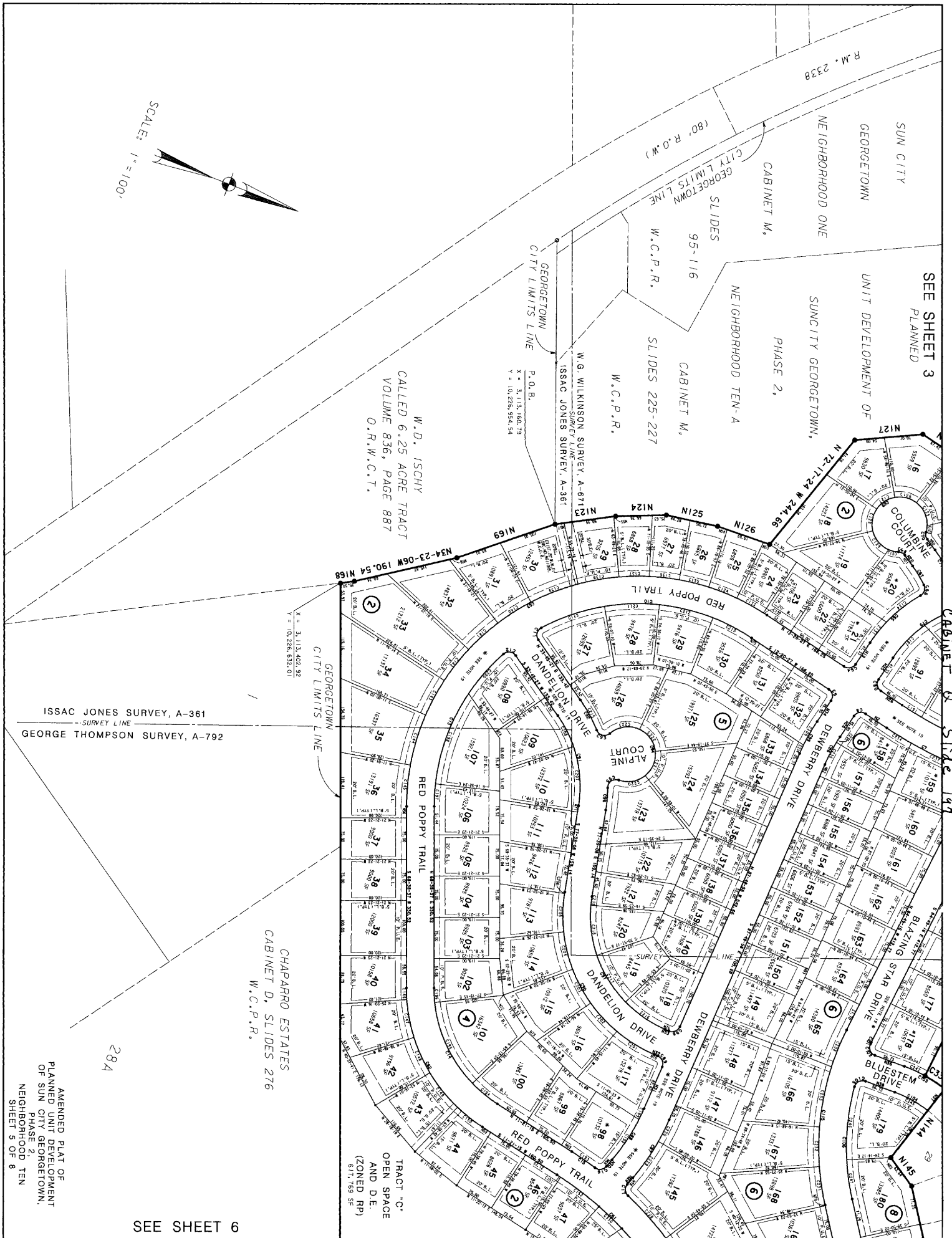
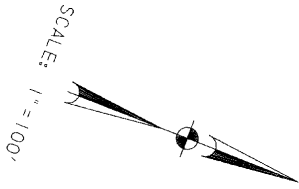
TRACT "V"  
OPEN SPACE  
3/4 I.R. SET  
FIND. IN CONG.  
X = 101,285.2  
Y = 101,285.2

TRACT "W"  
OPEN SPACE  
3/4 I.R. SET  
FIND. IN CONG.  
X = 101,285.2  
Y = 101,285.2

TRACT "X"  
OPEN SPACE  
3/4 I.R. SET  
FIND. IN CONG.  
X = 101,285.2  
Y = 101,285.2

TRACT "Y"  
OPEN SPACE  
3/4 I.R. SET  
FIND. IN CONG.  
X = 101,285.2  
Y = 101,285.2

TRACT "Z"  
OPEN SPACE  
3/4 I.R. SET  
FIND. IN CONG.  
X = 101,285.2  
Y = 101,285.2



SEE SHEET 3  
PLANNED

UNIT DEVELOPMENT OF  
SUN CITY GEORGETOWN,  
PHASE 2,

NEIGHBORHOOD TEN-A

SLIDES 225-227

W.C.P.R.

CABINET M.

W.C.P.R.

W.G. WILKINSON SURVEY, A-67113  
ISSAC JONES SURVEY, A-361

P.O.B.

W.D. ISCHY  
CALLED 6.25 ACRE TRACT  
VOLUME 836, PAGE 887  
O.R.W.C.T.

W.C.P.R.

W.C.P.R.

W.C.P.R.

W.C.P.R.

W.C.P.R.

W.C.P.R.

W.C.P.R.

W.C.P.R.

W.C.P.R.

CABINET M. Slide 147

BLAZING STAR DRIVE

BLUESTEM DRIVE

DEMERRY DRIVE

DEMERRY DRIVE

DEMERRY DRIVE

DEMERRY DRIVE

DEMERRY DRIVE

DEMERRY DRIVE

DEMERRY DRIVE

DEMERRY DRIVE

DEMERRY DRIVE

DEMERRY DRIVE

DEMERRY DRIVE

DEMERRY DRIVE

DEMERRY DRIVE

DEMERRY DRIVE

DEMERRY DRIVE

DEMERRY DRIVE

CHAPARRO ESTATES  
CABINET D, SLIDES 276  
W.C.P.R.

TRACT 'C'  
OPEN SPACE  
AND D.E.  
(ZONED RP)  
617,769 SF

ISSAC JONES SURVEY, A-361

GEORGE THOMPSON SURVEY, A-792

GEORGETOWN CITY LIMITS LINE

GEORGETOWN CITY LIMITS LINE

GEORGETOWN CITY LIMITS LINE

GEORGETOWN CITY LIMITS LINE

GEORGETOWN CITY LIMITS LINE

GEORGETOWN CITY LIMITS LINE

GEORGETOWN CITY LIMITS LINE

GEORGETOWN CITY LIMITS LINE

GEORGETOWN CITY LIMITS LINE

GEORGETOWN CITY LIMITS LINE

GEORGETOWN CITY LIMITS LINE

GEORGETOWN CITY LIMITS LINE

GEORGETOWN CITY LIMITS LINE

GEORGETOWN CITY LIMITS LINE

GEORGETOWN CITY LIMITS LINE

AMENDED PLAT OF  
PLANNED UNIT DEVELOPMENT  
OF SUN CITY GEORGETOWN,  
PHASE 2,  
NEIGHBORHOOD TEN  
SHEET 5 OF 8

284

SEE SHEET 6

SEE SHEET 5

28B

TRACT "C"  
OPEN SPACE  
AND D.E.  
(ZONED RP)  
617,769 SF

GEORGE THOMPSON  
SURVEY, A-792  
SURVEY LINE  
ABNER SHORT  
SURVEY, A-598

S 68-38-37 W 3500.46

GEORGETOWN  
CITY LIMITS LINE

CHAPARRO ESTATES  
CABINET D, SLIDES 276  
W.C.P.R.

26B

26C

26A

25

24

CHAPARRO ESTATES  
CABINET D, SLIDES 276  
W.C.P.R.

SEE SHEET 7

AMENDED PLAT OF  
PLANNED UNIT DEVELOPMENT  
OF SUN CITY GEORGETOWN,  
PHASE 2,  
NEIGHBORHOOD TEN  
SHEET 6 OF 8

100-YEAR FLOOD PLAIN  
SEE NOTE 9

TRACT "C"  
OPEN SPACE  
AND D.E.  
(ZONED RP)  
617,769 SF



SEE SHEET 4

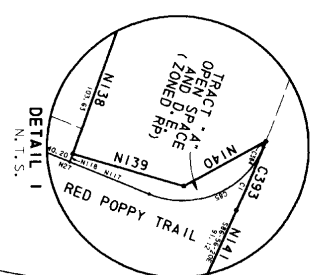
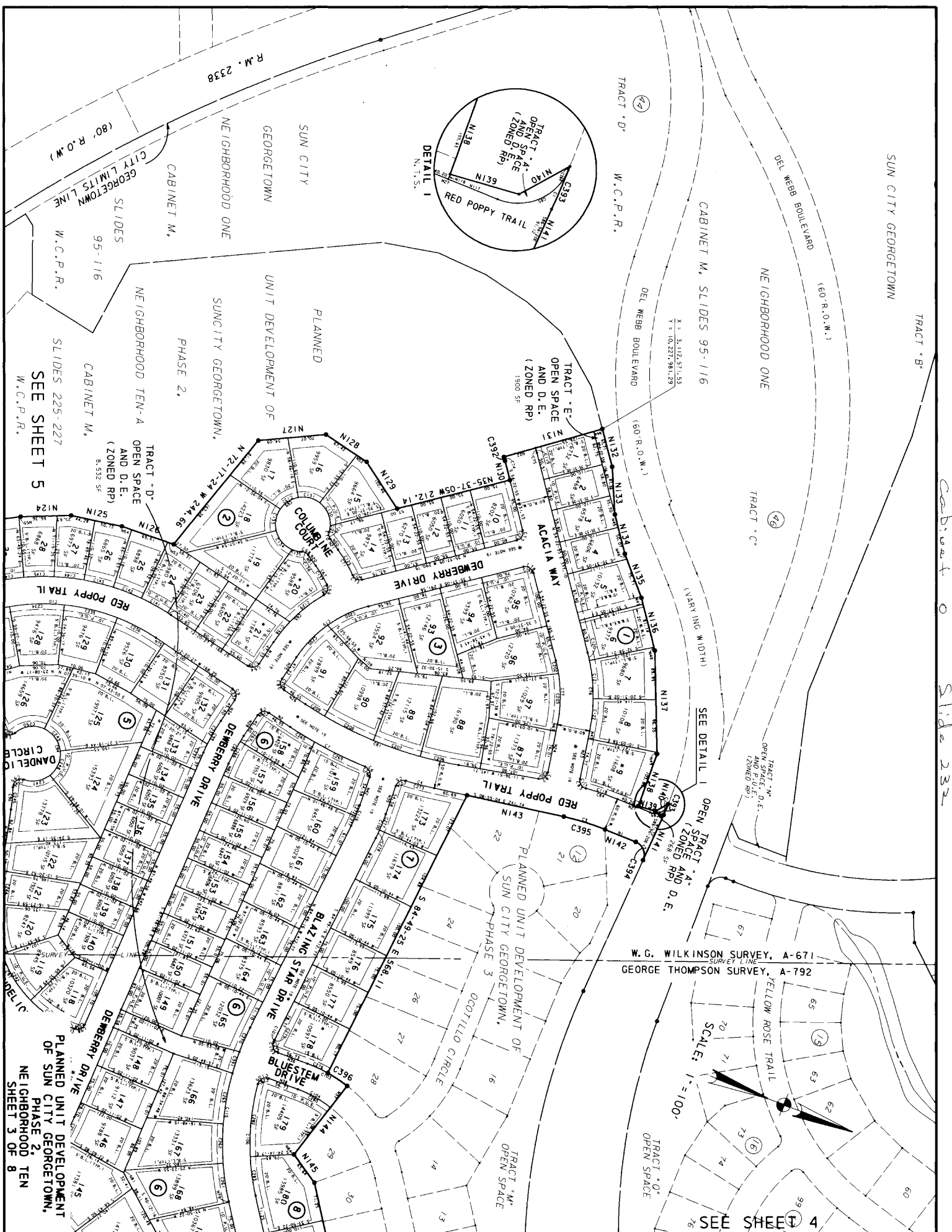


CABINET @ Slide 200

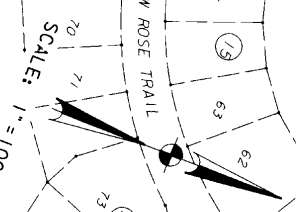
| NOTE | ARC LENGTH | DELTA    | CHORD BEARING | CHORD DISTANCE | CHORD BEARING | CHORD DISTANCE | NOTE | ARC LENGTH | DELTA    | CHORD BEARING | CHORD DISTANCE | NOTE | ARC LENGTH | DELTA   | CHORD BEARING | CHORD DISTANCE | NOTE  | ARC LENGTH | DELTA  | CHORD BEARING | CHORD DISTANCE |
|------|------------|----------|---------------|----------------|---------------|----------------|------|------------|----------|---------------|----------------|------|------------|---------|---------------|----------------|-------|------------|--------|---------------|----------------|
| 1    | 18.89      | 2.08-18  | 513.00        | 588-00-58E     | 13.69         | 588-00-58E     | 125  | 48.00      | 55.00-14 | 50.00         | 543-55-35W     | 250  | 52.25      | 7.39-00 | 375.00        | N37-31-20E     | 52.21 | 7.39-00    | 375.00 | N37-31-20E    | 52.21          |
| 2    | 40.26      | 92-16-25 | 42.00         | 546-55-27E     | 35.05         | 546-55-27E     | 126  | 41.60      | 47.40-12 | 50.00         | 520-22-28E     | 251  | 52.25      | 7.39-00 | 375.00        | N37-31-20E     | 52.21 | 7.39-00    | 375.00 | N37-31-20E    | 52.21          |
| 3    | 53.89      | 3-59-32  | 75.00         | 508-55-33E     | 53.89         | 508-55-33E     | 127  | 40.80      | 47.40-12 | 50.00         | N37-30-28E     | 252  | 52.25      | 7.39-00 | 375.00        | N37-31-20E     | 52.21 | 7.39-00    | 375.00 | N37-31-20E    | 52.21          |
| 4    | 22.80      | 87-05-32 | 15.00         | 548-28-17E     | 20.67         | 548-28-17E     | 128  | 46.39      | 55.09-14 | 50.00         | N28-27-10E     | 253  | 52.25      | 7.39-00 | 375.00        | N37-31-20E     | 52.21 | 7.39-00    | 375.00 | N37-31-20E    | 52.21          |
| 5    | 12.00      | 81-05-32 | 75.00         | 508-55-33E     | 53.89         | 508-55-33E     | 129  | 46.39      | 55.09-14 | 50.00         | N28-27-10E     | 254  | 52.25      | 7.39-00 | 375.00        | N37-31-20E     | 52.21 | 7.39-00    | 375.00 | N37-31-20E    | 52.21          |
| 6    | 12.00      | 81-05-32 | 75.00         | 508-55-33E     | 53.89         | 508-55-33E     | 130  | 46.39      | 55.09-14 | 50.00         | N28-27-10E     | 255  | 52.25      | 7.39-00 | 375.00        | N37-31-20E     | 52.21 | 7.39-00    | 375.00 | N37-31-20E    | 52.21          |
| 7    | 12.00      | 81-05-32 | 75.00         | 508-55-33E     | 53.89         | 508-55-33E     | 131  | 46.39      | 55.09-14 | 50.00         | N28-27-10E     | 256  | 52.25      | 7.39-00 | 375.00        | N37-31-20E     | 52.21 | 7.39-00    | 375.00 | N37-31-20E    | 52.21          |
| 8    | 23.56      | 90-00-30 | 315.00        | 582-39-33E     | 21.21         | 582-39-33E     | 132  | 7.35       | 1-00-08  | 420.00        | S11-50-23W     | 257  | 52.25      | 7.39-00 | 375.00        | N37-31-20E     | 52.21 | 7.39-00    | 375.00 | N37-31-20E    | 52.21          |
| 9    | 4.00       | 90-00-30 | 315.00        | 582-39-33E     | 21.21         | 582-39-33E     | 133  | 55.00      | 7-30-11  | 420.00        | S07-35-21W     | 258  | 52.25      | 7.39-00 | 375.00        | N37-31-20E     | 52.21 | 7.39-00    | 375.00 | N37-31-20E    | 52.21          |
| 10   | 23.56      | 90-00-30 | 315.00        | 582-39-33E     | 21.21         | 582-39-33E     | 134  | 55.00      | 7-30-11  | 420.00        | S07-35-21W     | 259  | 52.25      | 7.39-00 | 375.00        | N37-31-20E     | 52.21 | 7.39-00    | 375.00 | N37-31-20E    | 52.21          |
| 11   | 23.26      | 96-28-11 | 15.00         | N81-58-33E     | 22.38         | N81-58-33E     | 135  | 55.00      | 7-30-11  | 420.00        | S07-35-21W     | 260  | 52.25      | 7.39-00 | 375.00        | N37-31-20E     | 52.21 | 7.39-00    | 375.00 | N37-31-20E    | 52.21          |
| 12   | 23.26      | 96-28-11 | 15.00         | N81-58-33E     | 22.38         | N81-58-33E     | 136  | 55.00      | 7-30-11  | 420.00        | S07-35-21W     | 261  | 52.25      | 7.39-00 | 375.00        | N37-31-20E     | 52.21 | 7.39-00    | 375.00 | N37-31-20E    | 52.21          |
| 13   | 23.26      | 96-28-11 | 15.00         | N81-58-33E     | 22.38         | N81-58-33E     | 137  | 55.00      | 7-30-11  | 420.00        | S07-35-21W     | 262  | 52.25      | 7.39-00 | 375.00        | N37-31-20E     | 52.21 | 7.39-00    | 375.00 | N37-31-20E    | 52.21          |
| 14   | 50.91      | 4-21-13  | 610.00        | N13-1-12E      | 50.90         | N13-1-12E      | 138  | 75.00      | 12-13-06 | 420.00        | S42-40-03E     | 263  | 52.25      | 7.39-00 | 375.00        | N37-31-20E     | 52.21 | 7.39-00    | 375.00 | N37-31-20E    | 52.21          |
| 15   | 24.08      | 97-17-22 | 230.00        | N39-50-36E     | 23.03         | N39-50-36E     | 139  | 91.16      | 12-13-06 | 420.00        | S42-40-03E     | 264  | 52.25      | 7.39-00 | 375.00        | N37-31-20E     | 52.21 | 7.39-00    | 375.00 | N37-31-20E    | 52.21          |
| 16   | 24.08      | 97-17-22 | 230.00        | N39-50-36E     | 23.03         | N39-50-36E     | 140  | 91.16      | 12-13-06 | 420.00        | S42-40-03E     | 265  | 52.25      | 7.39-00 | 375.00        | N37-31-20E     | 52.21 | 7.39-00    | 375.00 | N37-31-20E    | 52.21          |
| 17   | 24.08      | 97-17-22 | 230.00        | N39-50-36E     | 23.03         | N39-50-36E     | 141  | 91.16      | 12-13-06 | 420.00        | S42-40-03E     | 266  | 52.25      | 7.39-00 | 375.00        | N37-31-20E     | 52.21 | 7.39-00    | 375.00 | N37-31-20E    | 52.21          |
| 18   | 412.96     | 35-18-53 | 670.00        | N40-03-38E     | 406.45        | N40-03-38E     | 142  | 71.60      | 9-48-03  | 420.00        | S17-20-44E     | 267  | 52.25      | 7.39-00 | 375.00        | N37-31-20E     | 52.21 | 7.39-00    | 375.00 | N37-31-20E    | 52.21          |
| 19   | 23.97      | 81-33-36 | 15.00         | N1-26-16E      | 21.50         | N1-26-16E      | 143  | 71.60      | 9-48-03  | 420.00        | S17-20-44E     | 268  | 52.25      | 7.39-00 | 375.00        | N37-31-20E     | 52.21 | 7.39-00    | 375.00 | N37-31-20E    | 52.21          |
| 20   | 23.97      | 81-33-36 | 15.00         | N1-26-16E      | 21.50         | N1-26-16E      | 144  | 71.60      | 9-48-03  | 420.00        | S17-20-44E     | 269  | 52.25      | 7.39-00 | 375.00        | N37-31-20E     | 52.21 | 7.39-00    | 375.00 | N37-31-20E    | 52.21          |
| 21   | 23.97      | 81-33-36 | 15.00         | N1-26-16E      | 21.50         | N1-26-16E      | 145  | 71.60      | 9-48-03  | 420.00        | S17-20-44E     | 270  | 52.25      | 7.39-00 | 375.00        | N37-31-20E     | 52.21 | 7.39-00    | 375.00 | N37-31-20E    | 52.21          |
| 22   | 24.76      | 24-16-16 | 625.00        | N12-21-72E     | 262.78        | N12-21-72E     | 146  | 50.80      | 3-58-53  | 330.00        | N62-31-10E     | 271  | 52.25      | 7.39-00 | 375.00        | N37-31-20E     | 52.21 | 7.39-00    | 375.00 | N37-31-20E    | 52.21          |
| 23   | 24.76      | 24-16-16 | 625.00        | N12-21-72E     | 262.78        | N12-21-72E     | 147  | 50.80      | 3-58-53  | 330.00        | N62-31-10E     | 272  | 52.25      | 7.39-00 | 375.00        | N37-31-20E     | 52.21 | 7.39-00    | 375.00 | N37-31-20E    | 52.21          |
| 24   | 57.94      | 16-12-40 | 325.00        | S05-55-52W     | 51.86         | S05-55-52W     | 148  | 70.50      | 13-27-52 | 330.00        | N44-21-86E     | 273  | 52.25      | 7.39-00 | 375.00        | N37-31-20E     | 52.21 | 7.39-00    | 375.00 | N37-31-20E    | 52.21          |
| 25   | 48.00      | 78-41-55 | 325.00        | S05-55-52W     | 51.86         | S05-55-52W     | 149  | 51.89      | 10-03-22 | 330.00        | N15-51-06E     | 274  | 52.25      | 7.39-00 | 375.00        | N37-31-20E     | 52.21 | 7.39-00    | 375.00 | N37-31-20E    | 52.21          |
| 26   | 48.00      | 78-41-55 | 325.00        | S05-55-52W     | 51.86         | S05-55-52W     | 150  | 51.89      | 10-03-22 | 330.00        | N15-51-06E     | 275  | 52.25      | 7.39-00 | 375.00        | N37-31-20E     | 52.21 | 7.39-00    | 375.00 | N37-31-20E    | 52.21          |
| 27   | 23.56      | 90-00-00 | 15.00         | N05-14-65E     | 21.21         | N05-14-65E     | 152  | 81.75      | 8-08-33  | 620.00        | N18-08-13E     | 276  | 52.25      | 7.39-00 | 375.00        | N37-31-20E     | 52.21 | 7.39-00    | 375.00 | N37-31-20E    | 52.21          |
| 28   | 23.56      | 90-00-00 | 15.00         | N05-14-65E     | 21.21         | N05-14-65E     | 153  | 100.39     | 9-17-46  | 620.00        | N20-07-19E     | 277  | 52.25      | 7.39-00 | 375.00        | N37-31-20E     | 52.21 | 7.39-00    | 375.00 | N37-31-20E    | 52.21          |
| 29   | 23.56      | 90-00-00 | 15.00         | N05-14-65E     | 21.21         | N05-14-65E     | 154  | 100.39     | 9-17-46  | 620.00        | N20-07-19E     | 278  | 52.25      | 7.39-00 | 375.00        | N37-31-20E     | 52.21 | 7.39-00    | 375.00 | N37-31-20E    | 52.21          |
| 30   | 23.56      | 90-00-00 | 15.00         | N05-14-65E     | 21.21         | N05-14-65E     | 155  | 100.39     | 9-17-46  | 620.00        | N20-07-19E     | 279  | 52.25      | 7.39-00 | 375.00        | N37-31-20E     | 52.21 | 7.39-00    | 375.00 | N37-31-20E    | 52.21          |
| 31   | 23.56      | 90-00-00 | 15.00         | N05-14-65E     | 21.21         | N05-14-65E     | 156  | 100.39     | 9-17-46  | 620.00        | N20-07-19E     | 280  | 52.25      | 7.39-00 | 375.00        | N37-31-20E     | 52.21 | 7.39-00    | 375.00 | N37-31-20E    | 52.21          |
| 32   | 23.56      | 90-00-00 | 15.00         | N05-14-65E     | 21.21         | N05-14-65E     | 157  | 100.39     | 9-17-46  | 620.00        | N20-07-19E     | 281  | 52.25      | 7.39-00 | 375.00        | N37-31-20E     | 52.21 | 7.39-00    | 375.00 | N37-31-20E    | 52.21          |
| 33   | 23.56      | 90-00-00 | 15.00         | N05-14-65E     | 21.21         | N05-14-65E     | 158  | 100.39     | 9-17-46  | 620.00        | N20-07-19E     | 282  | 52.25      | 7.39-00 | 375.00        | N37-31-20E     | 52.21 | 7.39-00    | 375.00 | N37-31-20E    | 52.21          |
| 34   | 23.56      | 90-00-00 | 15.00         | N05-14-65E     | 21.21         | N05-14-65E     | 159  | 100.39     | 9-17-46  | 620.00        | N20-07-19E     | 283  | 52.25      | 7.39-00 | 375.00        | N37-31-20E     | 52.21 | 7.39-00    | 375.00 | N37-31-20E    | 52.21          |
| 35   | 23.56      | 90-00-00 | 15.00         | N05-14-65E     | 21.21         | N05-14-65E     | 160  | 100.39     | 9-17-46  | 620.00        | N20-07-19E     | 284  | 52.25      | 7.39-00 | 375.00        | N37-31-20E     | 52.21 | 7.39-00    | 375.00 | N37-31-20E    | 52.21          |
| 36   | 23.56      | 90-00-00 | 15.00         | N05-14-65E     | 21.21         | N05-14-65E     | 161  | 100.39     | 9-17-46  | 620.00        | N20-07-19E     | 285  | 52.25      | 7.39-00 | 375.00        | N37-31-20E     | 52.21 | 7.39-00    | 375.00 | N37-31-20E    | 52.21          |
| 37   | 23.56      | 90-00-00 | 15.00         | N05-14-65E     | 21.21         | N05-14-65E     | 162  | 100.39     | 9-17-46  | 620.00        | N20-07-19E     | 286  | 52.25      | 7.39-00 | 375.00        | N37-31-20E     | 52.21 | 7.39-00    | 375.00 | N37-31-20E    | 52.21          |
| 38   | 23.56      | 90-00-00 | 15.00         | N05-14-65E     | 21.21         | N05-14-65E     | 163  | 100.39     | 9-17-46  | 620.00        | N20-07-19E     | 287  | 52.25      | 7.39-00 | 375.00        | N37-31-20E     | 52.21 | 7.39-00    | 375.00 | N37-31-20E    | 52.21          |
| 39   | 23.56      | 90-00-00 | 15.00         | N05-14-65E     | 21.21         | N05-14-65E     | 164  | 100.39     | 9-17-46  | 620.00        | N20-07-19E     | 288  | 52.25      | 7.39-00 | 375.00        | N37-31-20E     | 52.21 | 7.39-00    | 375.00 | N37-31-20E    | 52.21          |
| 40   | 23.56      | 90-00-00 | 15.00         | N05-14-65E     | 21.21         | N05-14-65E     | 165  | 100.39     | 9-17-46  | 620.00        | N20-07-19E     | 289  | 52.25      | 7.39-00 | 375.00        | N37-31-20E     | 52.21 | 7.39-00    | 375.00 | N37-31-20E    | 52.21          |
| 41   | 23.56      | 90-00-00 | 15.00         | N05-14-65E     | 21.21         | N05-14-65E     | 166  | 100.39     | 9-17-46  | 620.00        | N20-07-19E     | 290  | 52.25      | 7.39-00 | 375.00        | N37-31-20E     | 52.21 | 7.39-00    | 375.00 | N37-31-20E    | 52.21          |
| 42   | 23.56      | 90-00-00 | 15.00         | N05-14-65E     | 21.21         | N05-14-65E     | 167  | 100.39     | 9-17-46  | 620.00        | N20-07-19E     | 291  | 52.25      | 7.39-00 | 375.00        | N37-31-20E     | 52.21 | 7.39-00    | 375.00 | N37-31-20E    | 52.21          |
| 43   | 23.56      | 90-00-00 | 15.00         | N05-14-65E     | 21.21         | N05-14-65E     | 168  | 100.39     | 9-17-46  | 620.00        | N20-07-19E     | 292  | 52.25      | 7.39-00 | 375.00        | N37-31-20E     | 52.21 | 7.39-00    | 375.00 | N37-31-20E    | 52.21          |
| 44   | 23.56      | 90-00-00 | 15.00         | N05-14-65E     | 21.21         | N05-14-65E     | 169  | 100.39     | 9-17-46  | 620.00        | N20-07-19E     | 293  | 52.25      | 7.39-00 | 375.00        | N37-31-20E     | 52.21 | 7.39-00    | 375.00 | N37-31-20E    | 52.21          |
| 45   | 23.56      | 90-00-00 | 15.00         | N05-14-65E     | 21.21         | N05-14-65E     | 170  | 100.39     | 9-17-46  | 620.00        | N20-07-19E     | 294  | 52.25      | 7.39-00 | 375.00        | N37-31-20E     | 52.21 | 7.39-00    | 375.00 | N37-31-20E    | 52.21          |
| 46   | 23.56      | 90-00-00 | 15.00         | N05-14-65E     | 21.21         | N05-14-65E     | 171  | 100.39     | 9-17-46  | 620.00        | N20-07-19E     | 295  | 52.25      | 7.39-00 | 375.00        | N37-31-20E     | 52.21 | 7.39-00    | 375.00 | N37-31-20E    | 52.21          |
| 47   | 23.56      | 90-00-00 | 15.00         | N05-14-65E     | 21.21         | N05-14-65E     | 172  | 100.39     | 9-17-46  | 620.00        | N20-07-19E     | 296  | 52.25      | 7.39-00 | 375.00        | N37-31-20E     | 52.21 | 7.39-00    | 375.00 | N37-31-20E    | 52.21          |
| 48   | 23.56      | 90-00-00 | 15.00         | N05-14-65E     | 21.21         | N05-14-65E     | 173  | 100.39     | 9-17-46  | 620.00        | N20-07-19E     | 297  | 52.25      | 7.39-00 | 375.00        | N37-31-20E     | 52.21 | 7.39-00    | 375.00 | N37-31-20E    | 52.21          |
| 49   | 2          |          |               |                |               |                |      |            |          |               |                |      |            |         |               |                |       |            |        |               |                |







Cabinet 0 Slide 232

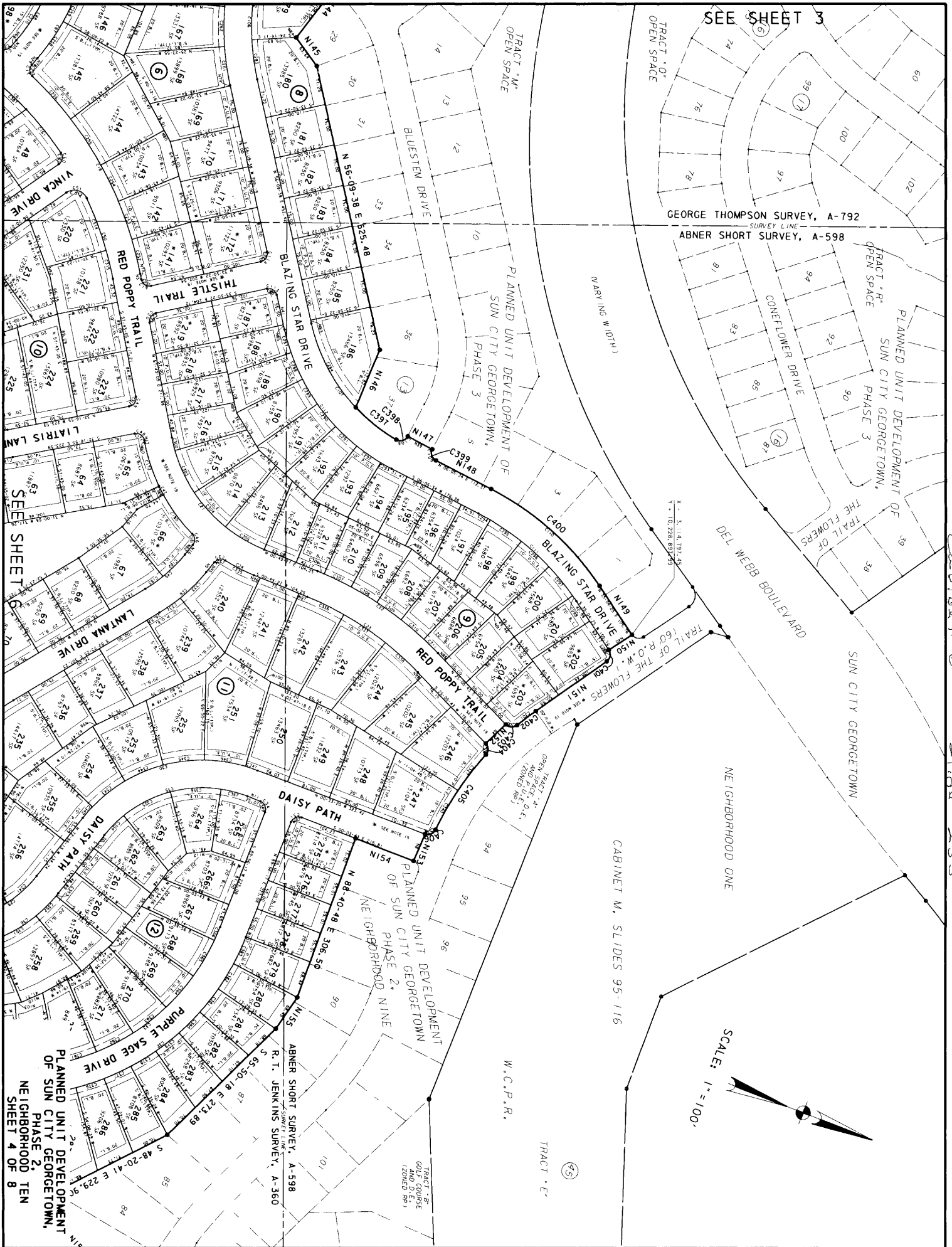


W. G. WILKINSON SURVEY, A-671  
 GEORGE THOMPSON SURVEY, A-792

SEE SHEET 4

SEE SHEET 5

PLANNED UNIT DEVELOPMENT OF SUN CITY GEORGETOWN, PHASE 2, NEIGHBORHOOD TEN SHEET 3 OF 8



SEE SHEET 3

GEORGE THOMPSON SURVEY, A-792  
SURVEY LINE  
ABNER SHORT SURVEY, A-598

PLANNED UNIT DEVELOPMENT OF  
SUN CITY GEORGETOWN,  
PHASE 3  
TRAIL OF THE FLOWERS  
CONFLOUNDER DRIVE

PLANNED UNIT DEVELOPMENT OF  
SUN CITY GEORGETOWN,  
PHASE 3

DEL WEBB BOULEVARD

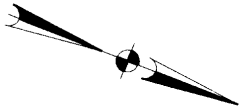
SUN CITY GEORGETOWN

NEIGHBORHOOD ONE

CABINET M. SLIDES 95-116

W.C.P.R.

SCALE: 1" = 100'



Cabinet 0 Slide 233

SEE SHEET 6

PLANNED UNIT DEVELOPMENT  
OF SUN CITY GEORGETOWN,  
PHASE 2,  
NEIGHBORHOOD TEN  
SHEET 4 OF 8

PLANNED UNIT DEVELOPMENT  
OF SUN CITY GEORGETOWN  
PHASE 2,  
NEIGHBORHOOD NINE

ABNER SHORT SURVEY, A-598  
R. T. JENKINS SURVEY, A-360

TRACT "E"  
GOLF COURSE  
AND E.P.  
(2000 SQ. FT.)

TRACT "E"

(45)

TRACT "M"  
OPEN SPACE

TRACT "O"  
OPEN SPACE

TRACT "R"  
OPEN SPACE

TRACT "A"  
OPEN SPACE  
(LAND PLOT, D.L.  
(TAKEN UP))

RED POPPY TRAIL

THISTLE TRAIL

BLAZING STAR DRIVE

BLUESTEM DRIVE

VINCA DRIVE

LANTANA DRIVE

DAISY PATH

PURPLE SAGE DRIVE

TRAIL OF THE FLOWERS

CONFLOUNDER DRIVE

DEL WEBB BOULEVARD

W.C.P.R.

ABNER SHORT SURVEY, A-598

R. T. JENKINS SURVEY, A-360

TRACT "M" OPEN SPACE

TRACT "O" OPEN SPACE

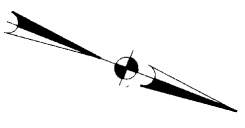
TRACT "R" OPEN SPACE

TRACT "A" OPEN SPACE

TRACT "E" GOLF COURSE AND E.P.

Lot numbers: 14, 15, 16, 17, 18, 19, 20, 21, 22, 23, 24, 25, 26, 27, 28, 29, 30, 31, 32, 33, 34, 35, 36, 37, 38, 39, 40, 41, 42, 43, 44, 45, 46, 47, 48, 49, 50, 51, 52, 53, 54, 55, 56, 57, 58, 59, 60, 61, 62, 63, 64, 65, 66, 67, 68, 69, 70, 71, 72, 73, 74, 75, 76, 77, 78, 79, 80, 81, 82, 83, 84, 85, 86, 87, 88, 89, 90, 91, 92, 93, 94, 95, 96, 97, 98, 99, 100, 101, 102, 103, 104, 105, 106, 107, 108, 109, 110, 111, 112, 113, 114, 115, 116, 117, 118, 119, 120, 121, 122, 123, 124, 125, 126, 127, 128, 129, 130, 131, 132, 133, 134, 135, 136, 137, 138, 139, 140, 141, 142, 143, 144, 145, 146, 147, 148, 149, 150, 151, 152, 153, 154, 155, 156, 157, 158, 159, 160, 161, 162, 163, 164, 165, 166, 167, 168, 169, 170, 171, 172, 173, 174, 175, 176, 177, 178, 179, 180, 181, 182, 183, 184, 185, 186, 187, 188, 189, 190, 191, 192, 193, 194, 195, 196, 197, 198, 199, 200, 201, 202, 203, 204, 205, 206, 207, 208, 209, 210, 211, 212, 213, 214, 215, 216, 217, 218, 219, 220, 221, 222, 223, 224, 225, 226, 227, 228, 229, 230, 231, 232, 233, 234, 235, 236, 237, 238, 239, 240, 241, 242, 243, 244, 245, 246, 247, 248, 249, 250, 251, 252, 253, 254, 255, 256, 257, 258, 259, 260, 261, 262, 263, 264, 265, 266, 267, 268, 269, 270, 271, 272, 273, 274, 275, 276, 277, 278, 279, 280, 281, 282, 283, 284, 285, 286, 287, 288, 289, 290, 291, 292, 293, 294, 295, 296, 297, 298, 299, 300, 301, 302, 303, 304, 305, 306, 307, 308, 309, 310, 311, 312, 313, 314, 315, 316, 317, 318, 319, 320, 321, 322, 323, 324, 325, 326, 327, 328, 329, 330, 331, 332, 333, 334, 335, 336, 337, 338, 339, 340, 341, 342, 343, 344, 345, 346, 347, 348, 349, 350, 351, 352, 353, 354, 355, 356, 357, 358, 359, 360, 361, 362, 363, 364, 365, 366, 367, 368, 369, 370, 371, 372, 373, 374, 375, 376, 377, 378, 379, 380, 381, 382, 383, 384, 385, 386, 387, 388, 389, 390, 391, 392, 393, 394, 395, 396, 397, 398, 399, 400, 401, 402, 403, 404, 405, 406, 407, 408, 409, 410, 411, 412, 413, 414, 415, 416, 417, 418, 419, 420, 421, 422, 423, 424, 425, 426, 427, 428, 429, 430, 431, 432, 433, 434, 435, 436, 437, 438, 439, 440, 441, 442, 443, 444, 445, 446, 447, 448, 449, 450, 451, 452, 453, 454, 455, 456, 457, 458, 459, 460, 461, 462, 463, 464, 465, 466, 467, 468, 469, 470, 471, 472, 473, 474, 475, 476, 477, 478, 479, 480, 481, 482, 483, 484, 485, 486, 487, 488, 489, 490, 491, 492, 493, 494, 495, 496, 497, 498, 499, 500, 501, 502, 503, 504, 505, 506, 507, 508, 509, 510, 511, 512, 513, 514, 515, 516, 517, 518, 519, 520, 521, 522, 523, 524, 525, 526, 527, 528, 529, 530, 531, 532, 533, 534, 535, 536, 537, 538, 539, 540, 541, 542, 543, 544, 545, 546, 547, 548, 549, 550, 551, 552, 553, 554, 555, 556, 557, 558, 559, 560, 561, 562, 563, 564, 565, 566, 567, 568, 569, 570, 571, 572, 573, 574, 575, 576, 577, 578, 579, 580, 581, 582, 583, 584, 585, 586, 587, 588, 589, 590, 591, 592, 593, 594, 595, 596, 597, 598, 599, 600, 601, 602, 603, 604, 605, 606, 607, 608, 609, 610, 611, 612, 613, 614, 615, 616, 617, 618, 619, 620, 621, 622, 623, 624, 625, 626, 627, 628, 629, 630, 631, 632, 633, 634, 635, 636, 637, 638, 639, 640, 641, 642, 643, 644, 645, 646, 647, 648, 649, 650, 651, 652, 653, 654, 655, 656, 657, 658, 659, 660, 661, 662, 663, 664, 665, 666, 667, 668, 669, 670, 671, 672, 673, 674, 675, 676, 677, 678, 679, 680, 681, 682, 683, 684, 685, 686, 687, 688, 689, 690, 691, 692, 693, 694, 695, 696, 697, 698, 699, 700, 701, 702, 703, 704, 705, 706, 707, 708, 709, 710, 711, 712, 713, 714, 715, 716, 717, 718, 719, 720, 721, 722, 723, 724, 725, 726, 727, 728, 729, 730, 731, 732, 733, 734, 735, 736, 737, 738, 739, 740, 741, 742, 743, 744, 745, 746, 747, 748, 749, 750, 751, 752, 753, 754, 755, 756, 757, 758, 759, 760, 761, 762, 763, 764, 765, 766, 767, 768, 769, 770, 771, 772, 773, 774, 775, 776, 777, 778, 779, 780, 781, 782, 783, 784, 785, 786, 787, 788, 789, 790, 791, 792, 793, 794, 795, 796, 797, 798, 799, 800, 801, 802, 803, 804, 805, 806, 807, 808, 809, 810, 811, 812, 813, 814, 815, 816, 817, 818, 819, 820, 821, 822, 823, 824, 825, 826, 827, 828, 829, 830, 831, 832, 833, 834, 835, 836, 837, 838, 839, 840, 841, 842, 843, 844, 845, 846, 847, 848, 849, 850, 851, 852, 853, 854, 855, 856, 857, 858, 859, 860, 861, 862, 863, 864, 865, 866, 867, 868, 869, 870, 871, 872, 873, 874, 875, 876, 877, 878, 879, 880, 881, 882, 883, 884, 885, 886, 887, 888, 889, 890, 891, 892, 893, 894, 895, 896, 897, 898, 899, 900, 901, 902, 903, 904, 905, 906, 907, 908, 909, 910, 911, 912, 913, 914, 915, 916, 917, 918, 919, 920, 921, 922, 923, 924, 925, 926, 927, 928, 929, 930, 931, 932, 933, 934, 935, 936, 937, 938, 939, 940, 941, 942, 943, 944, 945, 946, 947, 948, 949, 950, 951, 952, 953, 954, 955, 956, 957, 958, 959, 960, 961, 962, 963, 964, 965, 966, 967, 968, 969, 970, 971, 972, 973, 974, 975, 976, 977, 978, 979, 980, 981, 982, 983, 984, 985, 986, 987, 988, 989, 990, 991, 992, 993, 994, 995, 996, 997, 998, 999, 1000

SCALE: 1" = 100'



SEE SHEET 3  
PLANNED

UNIT DEVELOPMENT OF  
SUNCITY GEORGETOWN,  
PHASE 2,

NEIGHBORHOOD TEN-A

CABINET M.,  
SLIDES 225-227

TRACT - D\*  
OPEN SPACE  
AND D.E.  
(ZONED RP)  
8,532 SF

TRACT - B\*  
OPEN SPACE, D.E.  
AND P.U.E.  
(ZONED RP)  
3,524 SF

TRACT - C\*  
OPEN SPACE  
AND D.E.  
(ZONED RP)  
625,345 SF

W.C.P.R.,  
ISSAC JONES SURVEY, A-361

W.C.P.R.,  
ISSAC JONES SURVEY, A-361

W.C.P.R.,  
ISSAC JONES SURVEY, A-361

W.C.P.R.,  
ISSAC JONES SURVEY, A-361

W.C.P.R.,  
ISSAC JONES SURVEY, A-361

W.C.P.R.,  
ISSAC JONES SURVEY, A-361

W.C.P.R.,  
ISSAC JONES SURVEY, A-361

W.C.P.R.,  
ISSAC JONES SURVEY, A-361

W.C.P.R.,  
ISSAC JONES SURVEY, A-361

W.C.P.R.,  
ISSAC JONES SURVEY, A-361

W.C.P.R.,  
ISSAC JONES SURVEY, A-361

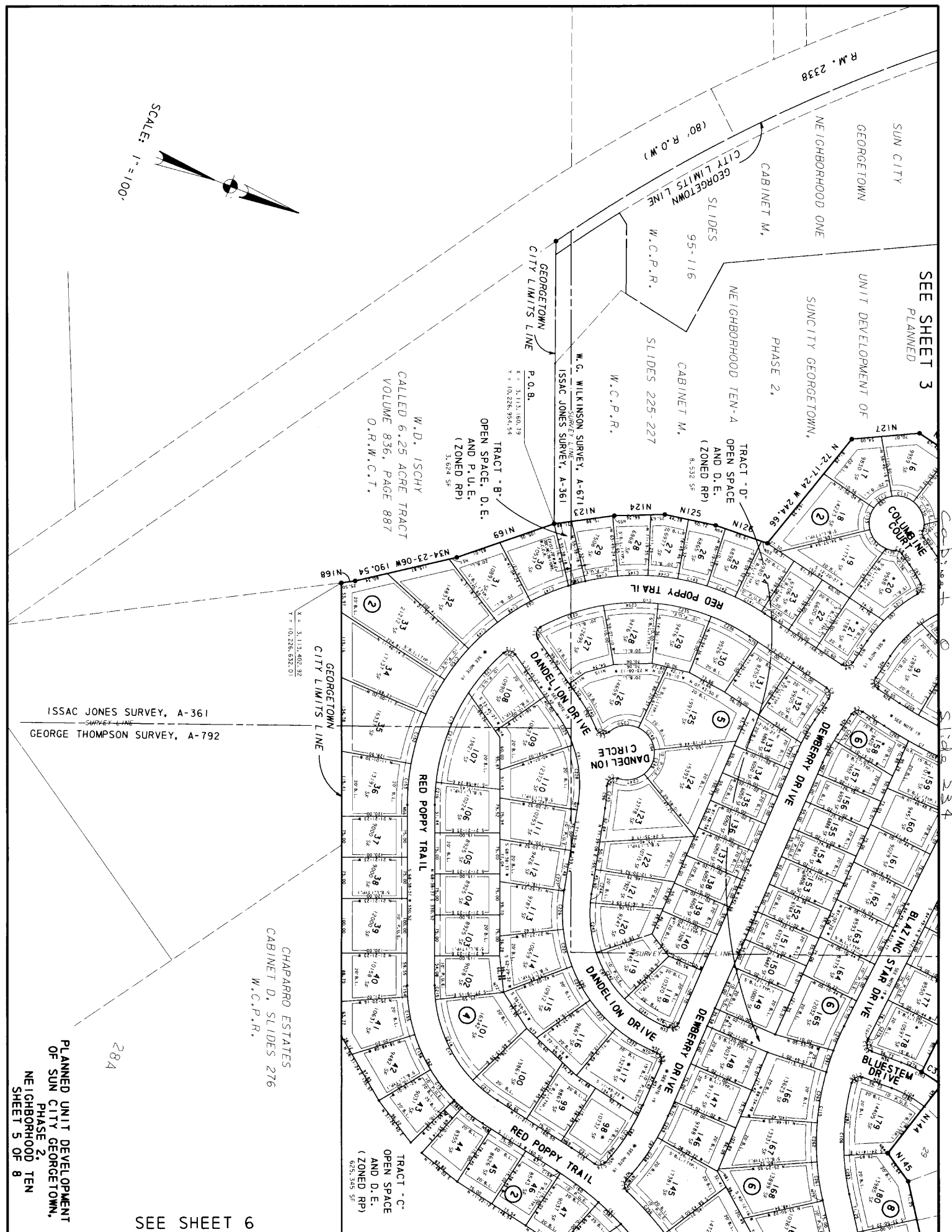
W.C.P.R.,  
ISSAC JONES SURVEY, A-361

ISSAC JONES SURVEY, A-361  
SURVEY LINE  
GEORGE THOMPSON SURVEY, A-792

CHAPARRO ESTATES  
CABINET D, SLIDES 276  
W.C.P.R.

PLANNED UNIT DEVELOPMENT  
OF SUN CITY GEORGETOWN,  
PHASE 2, TEN  
NEIGHBORHOOD  
SHEET 5 OF 8

SEE SHEET 6



SEE SHEET 5

TRACT - C  
OPEN SPACE  
AND D. E.  
(ZONED RP)  
6251, 545 SF

GEORGE THOMPSON  
SURVEY, A-792  
SURVEY LINE  
ABNER SHORT  
SURVEY, A-598

S 68-38-37 W 3500.46

GEORGETOWN  
CITY LIMITS LINE

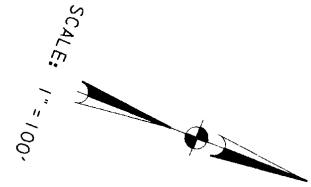
100-YEAR FLOOD PLAIN  
SEE NOTE 9

100-YEAR FLOOD PLAIN  
SEE NOTE 9

TRACT - C  
OPEN SPACE  
AND D. E.  
(ZONED RP)  
6251, 545 SF

CHAPARRO ESTATES  
CABINET D, SLIDES 276  
W.C.P.R.

CHAPARRO ESTATES  
CABINET D, SLIDES 276  
W.C.P.R.



28B

26B

26C

27

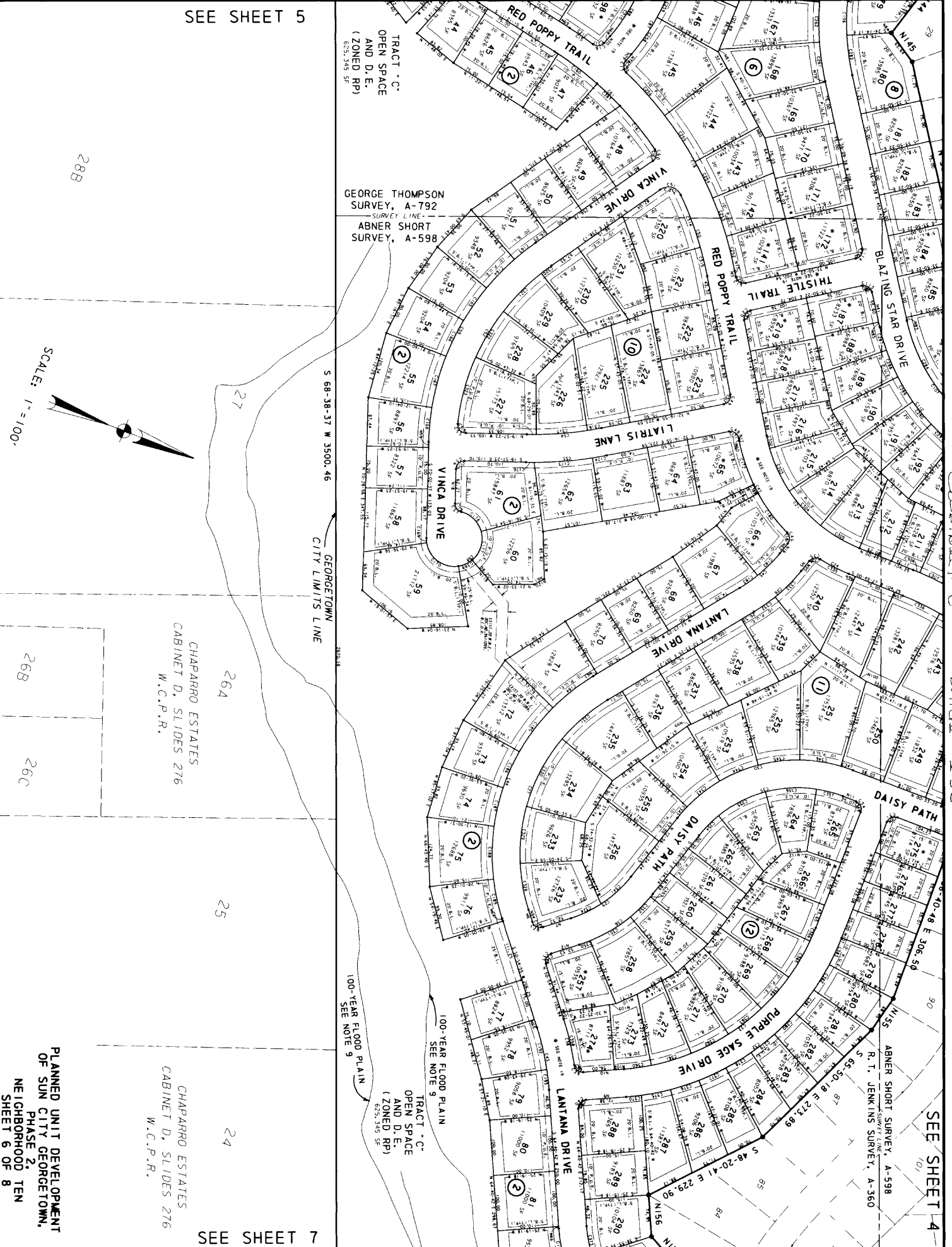
264

25

24

SEE SHEET 7

PLANNED UNIT DEVELOPMENT  
OF SUN CITY GEORGETOWN,  
PHASE 2,  
NEIGHBORHOOD TEN  
SHEET 6 OF 8



SEE SHEET 4

Slide 235

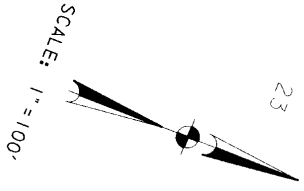
SEE SHEET 6

CHAPARRO ESTATES  
CABINET D. SLIDES 276  
W.C.P.R.

24

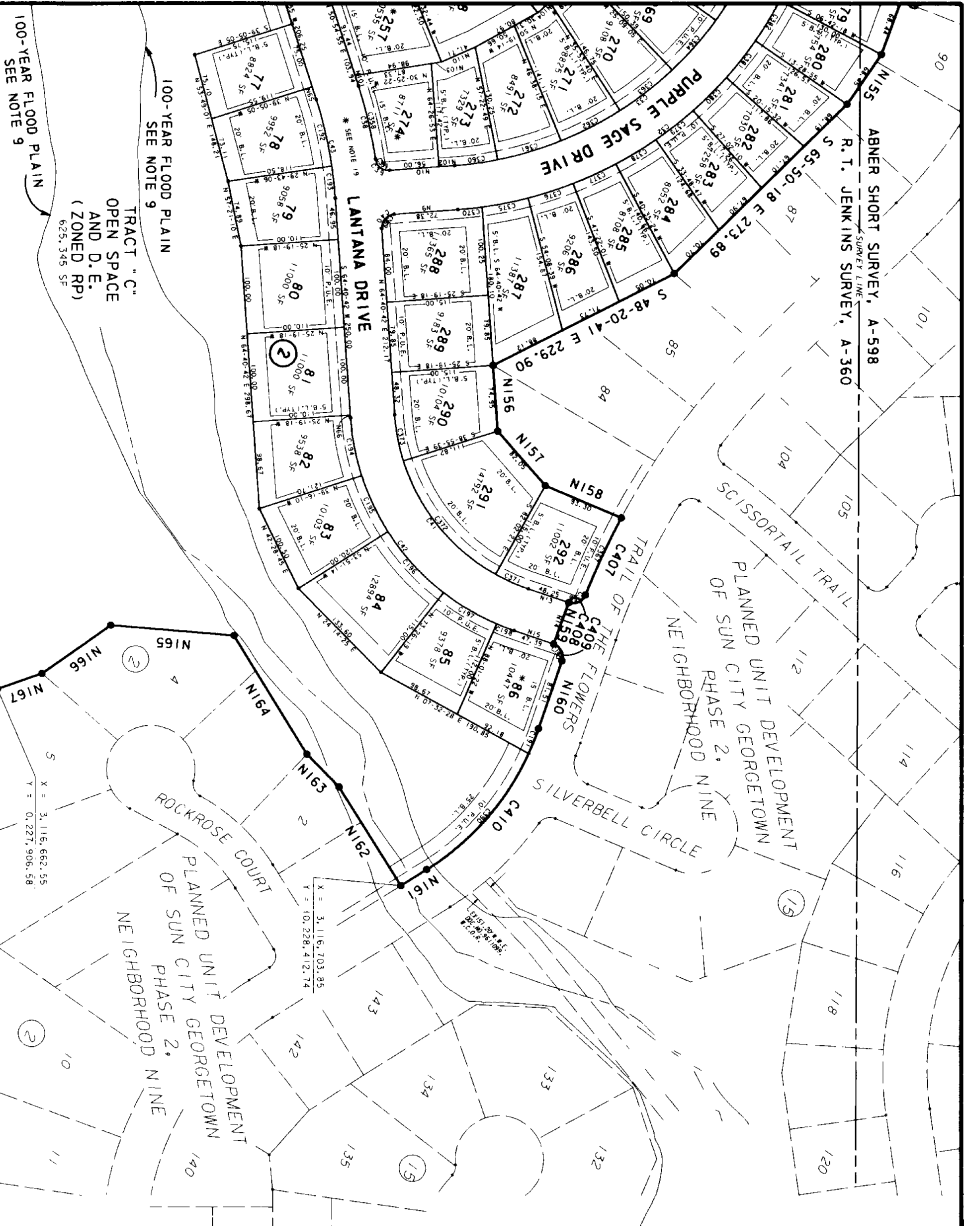
23

22



SCALE: 1" = 100'

GEORGETOWN  
CITY LIMITS LINE



100-YEAR FLOOD PLAIN  
SEE NOTE 9

100-YEAR FLOOD PLAIN  
SEE NOTE 9

TRACT "C"  
OPEN SPACE  
LAND D. E.  
(ZONED RP)  
W.C.P.R.

ROCKROSE COURT  
PLANNED UNIT DEVELOPMENT  
OF SUN CITY GEORGETOWN  
PHASE 2,  
NEIGHBORHOOD NINE

SCISSORTAIL TRAIL  
PLANNED UNIT DEVELOPMENT  
OF SUN CITY GEORGETOWN  
PHASE 2,  
NEIGHBORHOOD NINE

Cabinet 0 Slide 236

| NOTE | NOTE TABLE |               |       | NOTE | NOTE TABLE |               |       |
|------|------------|---------------|-------|------|------------|---------------|-------|
|      | DISTANCE   | BEARING       | DELTA |      | DISTANCE   | BEARING       | DELTA |
| 1    | 60.34      | S 0° 47' 15W  |       | 100  | 13.59      | N 11° 17' 28E |       |
| 2    | 46.55      | S 12° 20' 57W |       | 101  | 12.49      | N 65° 54' 55E |       |
| 3    | 10.02      | N 51° 43' 05E |       | 102  | 17.71      | N 62° 33' 07W |       |
| 4    | 10.02      | S 72° 12' 40E |       | 103  | 18.29      | N 63° 52' 39W |       |
| 5    | 22.87      | N 65° 54' 95E |       | 104  | 10.42      | N 65° 52' 39W |       |
| 6    | 22.31      | N 65° 54' 95E |       | 105  | 18.09      | N 71° 54' 58W |       |
| 7    | 52.53      | N 83° 00' 05W |       | 106  | 18.09      | N 71° 54' 58W |       |
| 8    | 52.53      | S 25° 31' 07E |       | 107  | 44.00      | N 55° 22' 55E |       |
| 9    | 72.38      | S 25° 31' 07E |       | 108  | 44.00      | N 55° 22' 55E |       |
| 10   | 173.71     | N 25° 31' 07E |       | 109  | 29.00      | S 17° 25' 48W |       |
| 11   | 25.07      | S 0° 00' 43E  |       | 110  | 41.71      | N 45° 00' 51W |       |
| 12   | 48.25      | N 57° 07' 05E |       | 111  | 45.14      | N 62° 33' 07E |       |
| 13   | 48.25      | N 68° 31' 28E |       | 112  | 45.14      | N 62° 33' 07E |       |
| 14   | 50.07      | N 68° 31' 28E |       | 113  | 48.33      | N 65° 08' 39W |       |
| 15   | 47.39      | S 2° 27' 16E  |       | 114  | 35.10      | N 55° 28' 02W |       |
| 16   | 22.97      | N 72° 14' 20W |       | 115  | 54.34      | N 58° 52' 42W |       |
| 17   | 62.27      | N 70° 02' 37E |       | 117  | 2.44       | S 0° 24' 15W  |       |
| 18   | 47.33      | N 71° 39' 31W |       | 118  | 2.44       | S 88° 22' 08W |       |
| 19   | 23.89      | S 32° 53' 48W |       | 119  | 58.20      | N 25° 34' 38E |       |
| 20   | 23.89      | S 32° 53' 48W |       | 120  | 58.20      | N 25° 34' 38E |       |
| 21   | 42.00      | N 31° 13' 47W |       | 121  | 60.76      | N 44° 46' 02E |       |
| 22   | 42.00      | N 31° 13' 47W |       | 122  | 60.76      | N 44° 46' 02E |       |
| 23   | 88.14      | N 75° 56' 02E |       | 122  | 41.16      | S 71° 33' 38E |       |
| 24   | 88.14      | S 75° 56' 02W |       | 123  | 110.90     | N 25° 00' 46W |       |
| 25   | 46.35      | S 75° 56' 02W |       | 124  | 91.99      | N 25° 39' 43W |       |
| 26   | 46.35      | S 75° 56' 02W |       | 125  | 91.99      | N 25° 39' 43W |       |
| 27   | 64.35      | N 0° 47' 15E  |       | 126  | 100.00     | N 2° 11' 35W  |       |
| 28   | 49.80      | S 77° 39' 31E |       | 127  | 124.16     | N 25° 17' 30W |       |
| 29   | 15.58      | S 70° 56' 40E |       | 128  | 189.21     | N 12° 26' 55E |       |
| 30   | 82.62      | N 87° 48' 58W |       | 130  | 36.53      | S 55° 22' 58W |       |
| 31   | 7.95       | S 2° 11' 02W  |       | 131  | 186.55     | N 33° 13' 48W |       |
| 32   | 7.95       | S 2° 11' 02W  |       | 132  | 71.37      | N 55° 03' 13E |       |
| 33   | 7.95       | N 2° 11' 02E  |       | 133  | 81.56      | N 65° 25' 46E |       |
| 34   | 49.80      | N 81° 58' 39E |       | 134  | 85.71      | N 44° 58' 39E |       |
| 35   | 56.73      | N 0° 51' 55W  |       | 135  | 85.71      | N 44° 58' 39E |       |
| 36   | 50.00      | S 73° 26' 40E |       | 136  | 99.59      | N 51° 18' 38E |       |
| 37   | 50.00      | S 73° 26' 40E |       | 137  | 99.59      | N 51° 18' 38E |       |
| 38   | 56.73      | S 0° 51' 55E  |       | 137  | 181.15     | N 5° 04' 48W  |       |
| 39   | 56.73      | S 0° 51' 55E  |       | 138  | 181.15     | N 5° 04' 48W  |       |
| 40   | 50.00      | S 54° 55' 35E |       | 139  | 32.69      | N 5° 04' 48W  |       |
| 41   | 50.00      | S 54° 55' 35E |       | 140  | 26.53      | N 50° 04' 47W |       |
| 42   | 64.24      | S 56° 09' 38W |       | 141  | 91.12      | S 86° 56' 40E |       |
| 43   | 54.58      | S 51° 58' 07E |       | 142  | 91.12      | S 86° 56' 40E |       |
| 44   | 14.38      | S 37° 13' 48E |       | 143  | 181.07     | S 8° 55' 15W  |       |
| 45   | 74.50      | N 54° 22' 55E |       | 144  | 158.55     | S 71° 26' 40E |       |
| 46   | 10.00      | N 41° 58' 39E |       | 145  | 63.68      | N 33° 46' 02E |       |
| 47   | 10.00      | N 41° 58' 39E |       | 146  | 112.37     | N 8° 05' 34E  |       |
| 48   | 12.16      | N 64° 18' 38E |       | 148  | 105.76     | N 35° 04' 25E |       |
| 49   | 2.81       | N 67° 29' 17E |       | 149  | 105.76     | N 35° 04' 25E |       |
| 50   | 27.89      | S 32° 53' 48W |       | 150  | 150.00     | N 5° 55' 35E  |       |
| 51   | 27.89      | S 32° 53' 48W |       | 151  | 150.00     | N 5° 55' 35E  |       |
| 52   | 18.77      | S 2° 11' 35E  |       | 152  | 50.00      | S 54° 54' 7E  |       |
| 53   | 18.77      | S 2° 11' 35E  |       | 153  | 50.00      | S 54° 54' 7E  |       |
| 54   | 18.77      | S 2° 11' 35E  |       | 154  | 152.58     | S 88° 24' 32E |       |
| 55   | 3.15       | S 29° 00' 46E |       | 155  | 112.58     | S 0° 00' 43E  |       |
| 56   | 20.34      | N 68° 31' 28E |       | 156  | 58.45      | S 71° 33' 38E |       |
| 57   | 20.34      | N 68° 31' 28E |       | 157  | 58.45      | S 71° 33' 38E |       |
| 58   | 18.38      | N 11° 21' 16E |       | 158  | 50.01      | N 88° 31' 29E |       |
| 59   | 9.86       | N 70° 02' 37E |       | 159  | 50.01      | N 88° 31' 29E |       |
| 60   | 5.72       | N 57° 07' 05E |       | 160  | 82.09      | N 27° 21' 3E  |       |
| 61   | 5.72       | N 57° 07' 05E |       | 161  | 82.09      | N 27° 21' 3E  |       |
| 62   | 8.03       | S 52° 23' 29E |       | 162  | 132.00     | S 52° 23' 29E |       |
| 63   | 8.03       | S 52° 23' 29E |       | 163  | 132.00     | S 52° 23' 29E |       |
| 64   | 5.00       | N 65° 54' 95E |       | 164  | 51.94      | S 52° 09' 40W |       |
| 65   | 5.00       | N 65° 54' 95E |       | 165  | 51.94      | S 52° 09' 40W |       |
| 66   | 15.00      | N 65° 03' 38E |       | 166  | 196.00     | S 51° 31' 02W |       |
| 67   | 12.80      | N 75° 56' 02E |       | 167  | 95.00      | S 58° 51' 46E |       |
| 68   | 15.58      | S 70° 56' 40E |       | 168  | 25.50      | S 46° 46' 32E |       |
| 69   | 22.25      | S 1° 21' 05W  |       | 169  | 25.50      | S 46° 46' 32E |       |
| 70   | 11.66      | S 77° 39' 31W |       | 170  | 195.06     | N 62° 40' 41W |       |
| 71   | 11.66      | S 77° 39' 31W |       | 171  | 195.06     | N 62° 40' 41W |       |
| 72   | 1.58       | S 55° 59' 04W |       | 172  | 195.06     | N 62° 40' 41W |       |
| 73   | 724.97     | S 27° 18' 19W |       | 173  | 724.97     | S 27° 18' 19W |       |
| 74   | 18.25      | N 17° 20' 27E |       | 174  | 18.25      | N 17° 20' 27E |       |
| 75   | 7.85       | S 2° 11' 02W  |       | 175  | 7.85       | S 2° 11' 02W  |       |
| 76   | 10.42      | S 51° 43' 05W |       | 176  | 10.42      | S 51° 43' 05W |       |
| 77   | 10.42      | S 51° 43' 05W |       | 177  | 10.42      | S 51° 43' 05W |       |
| 78   | 15.58      | N 65° 03' 38E |       | 178  | 15.58      | N 65° 03' 38E |       |
| 79   | 23.22      | S 46° 12' 16W |       | 179  | 23.22      | S 46° 12' 16W |       |
| 80   | 60.00      | S 46° 12' 16W |       | 180  | 60.00      | S 46° 12' 16W |       |
| 81   | 4.76       | N 88° 34' 48W |       | 181  | 4.76       | N 88° 34' 48W |       |
| 82   | 23.00      | N 87° 48' 58W |       | 182  | 23.00      | N 87° 48' 58W |       |
| 83   | 5.04       | N 32° 46' 02E |       | 183  | 5.04       | N 32° 46' 02E |       |
| 84   | 8.64       | N 65° 03' 38E |       | 184  | 8.64       | N 65° 03' 38E |       |
| 85   | 18.07      | N 25° 05' 43E |       | 185  | 18.07      | N 25° 05' 43E |       |
| 86   | 18.07      | N 25° 05' 43E |       | 186  | 18.07      | N 25° 05' 43E |       |
| 87   | 18.96      | N 65° 03' 38E |       | 187  | 18.96      | N 65° 03' 38E |       |
| 88   | 18.96      | N 65° 03' 38E |       | 188  | 18.96      | N 65° 03' 38E |       |
| 89   | 18.96      | N 65° 03' 38E |       | 189  | 18.96      | N 65° 03' 38E |       |
| 90   | 14.31      | N 5° 02' 00E  |       | 190  | 14.31      | N 5° 02' 00E  |       |
| 91   | 5.88       | N 14° 20' 48E |       | 191  | 5.88       | N 14° 20' 48E |       |
| 92   | 5.88       | N 14° 20' 48E |       | 192  | 5.88       | N 14° 20' 48E |       |
| 93   | 14.32      | S 50° 54' 55W |       | 193  | 14.32      | S 50° 54' 55W |       |
| 94   | 22.31      | N 72° 12' 20W |       | 194  | 22.31      | N 72° 12' 20W |       |
| 95   | 12.45      | N 0° 45' 27E  |       | 195  | 12.45      | N 0° 45' 27E  |       |
| 96   | 12.45      | N 0° 45' 27E  |       | 196  | 12.45      | N 0° 45' 27E  |       |
| 97   | 10.42      | N 65° 05' 43E |       | 197  | 10.42      | N 65° 05' 43E |       |
| 98   | 10.42      | N 65° 05' 43E |       | 198  | 10.42      | N 65° 05' 43E |       |
| 99   | 7.82       | N 47° 19' 48W |       | 199  | 7.82       | N 47° 19' 48W |       |

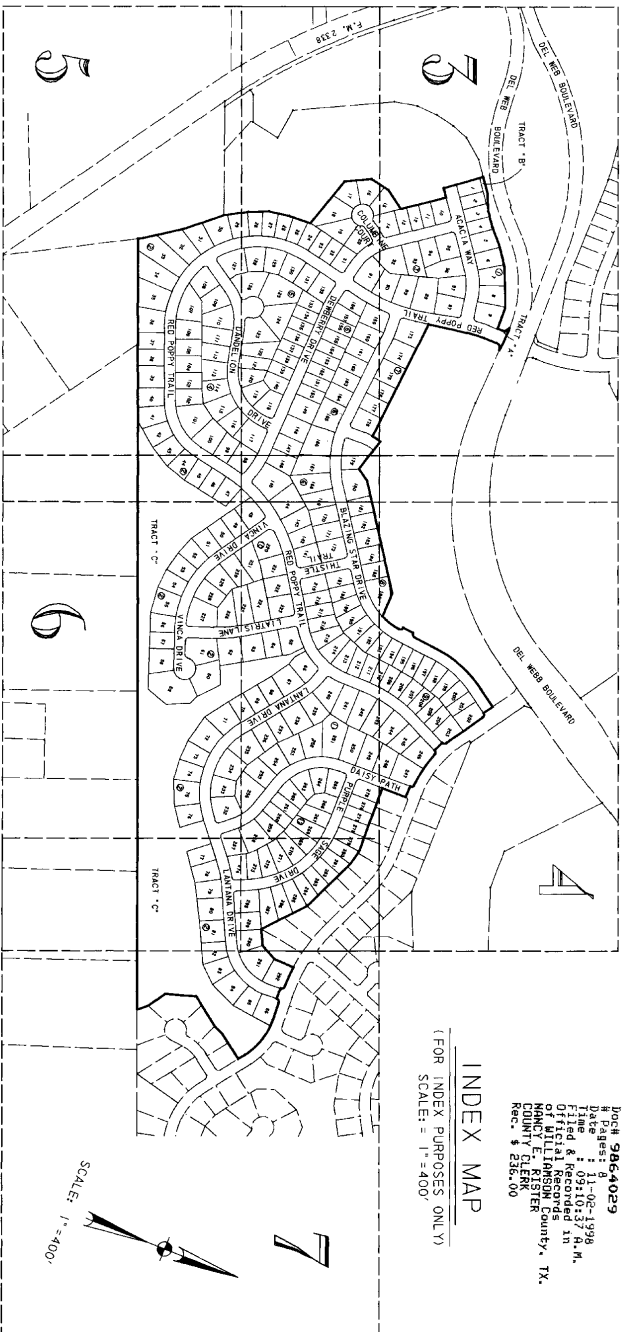
PLANNED UNIT DEVELOPMENT  
OF SUN CITY GEORGETOWN,  
PHASE 2,  
NEIGHBORHOOD  
SHEET 7 OF 8

Main data table with columns: NOTE, ARC LENGTH, DELTA, CURVE TABLE (RADIUS, CHORD, DISTANCE), CHORD BEARING, CHORD DISTANCE, NOTE, ARC LENGTH, DELTA, CURVE TABLE (RADIUS, CHORD, DISTANCE), CHORD BEARING, CHORD DISTANCE, NOTE, ARC LENGTH, DELTA, CURVE TABLE (RADIUS, CHORD, DISTANCE), CHORD BEARING, CHORD DISTANCE.

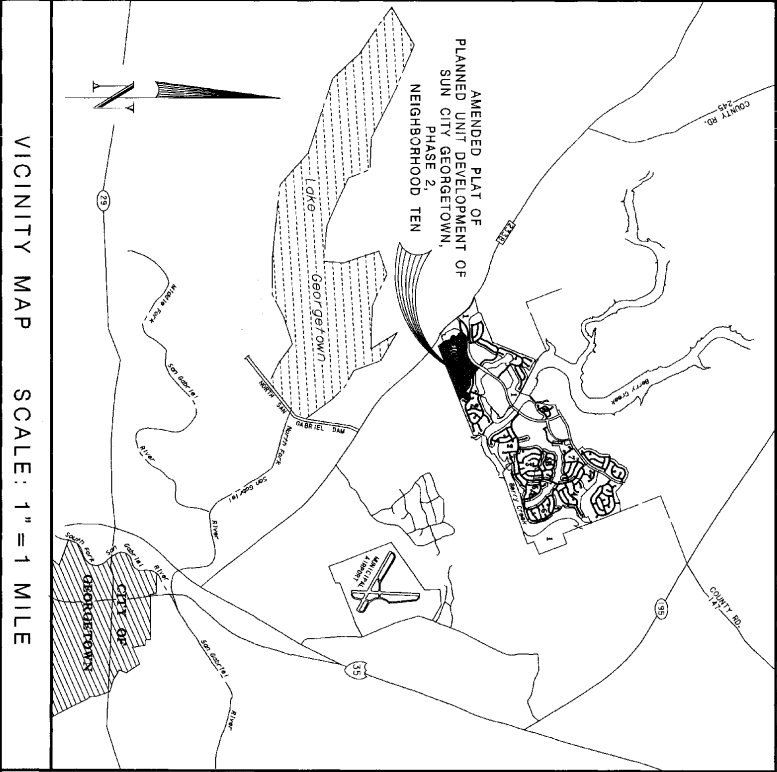
Station 237

PLANNED UNIT DEVELOPMENT OF SUN CITY DEVELOPMENT, PHASE 2, NEIGHBORHOOD TEN SHEET 8 OF 8

Book 9864029  
 Date: 91-02-1998  
 Filed: 09:10:37 A.M.  
 Office: Recorded in  
 County: Tarrant  
 County Clerk: Kristie  
 Rec. # 235100



1. R.L. INDICATES BUILDING SETBACK LINE.
2. D.E. INDICATES DRAINAGE EASEMENT.
3. M.E. INDICATES WATER, WIRE, EASEMENT.
4. W.E. INDICATES WATERWAY EASEMENT.
5. F.E. INDICATES FIRE C. UTILITY EASEMENT.
6. GAS SERVICE WILL BE PROVIDED BY ONE STAR GAS COMPANY.
7. WATER, WASTEWATER AND SEWERAGE SERVICE WILL BE PROVIDED BY THE CITY OF GEORGETOWN.
8. ALL EASEMENTS AND COVENANTS ARE REFERENCED TO THE TERMS GOVERNING SYSTEMS CONTROL ZONE AND EASEMENTS AND COVENANTS AGREEMENT FOR THE DEVELOPMENT OF THE CITY OF GEORGETOWN, TEXAS, DATED 08/10/91.
9. CONDOMINIUMS ARE BASED ON 15000 SQUARED FEET PER UNIT. THE BOUNDARIES OF THE 100-YEAR FLOOD PLAIN OF A WATERWAY ARE SHOWN ON THE FLOOD MAP. THE FLOOD PLAIN BOUNDARIES ARE ESTABLISHED BY A FLOOD INSURANCE RATE MAP (FIRM) NUMBER 17080C0100, DATED 02/19/83, ELEVATION = 233.87' ABOVE MEAN SEA LEVEL. THE FLOOD PLAIN BOUNDARIES ARE SHOWN ON THE FLOOD MAP.
10. ALL LOTS WITHIN THE BOUNDARIES OF THIS PLAN SHALL BE ZONED R-1 (RESIDENTIAL SINGLE-FAMILY) BY THE CITY OF GEORGETOWN.
11. SETBACKS WILL BE PROVIDED ON BOTH SIDES FOR A FOOT OR MORE FROM THE SIDEWAYS, FRONT, REAR, AND OTHER SPINE ROADS. NO SIDEWAYS ARE REQUIRED FOR COLLECTION OR RESIDENTIAL.
12. THE ALLOWABLE IMPERVIOUS COVER IS AS FOLLOWS:  
 70% MAXIMUM IMPERVIOUS COVER FOR THE DEVELOPMENT TRACTS (NON-RESIDENTIAL);  
 70% FOR MULTIFAMILY LOTS;  
 40% FOR SINGLE-FAMILY LOTS.
13. THE PROVISIONS OF THE ZENITH PLAN - DEVELOPMENT PLAN SHALL ALSO GOVERN THIS PROJECT. THIS PLAN SHALL BE SUBJECT TO THE CITY OF GEORGETOWN DEVELOPMENT PLAN.
14. THIS PROPERTY IS ZONED R-1 (RESIDENTIAL SINGLE-FAMILY) WITH THE EXCEPTION OF THE TRACTS WHICH ARE LABELED, SHOWN AND SPECIFIED AS OPEN SPACE (ZONED A1).
15. ALL RIGHTS-OF-WAY ARE 50-FOOT WIDE UNLESS OTHERWISE NOTED.
16. ALL UTILITIES SHALL BE 50-FOOT WIDE UNLESS OTHERWISE NOTED.
17. DIRECTIONAL BEINGS SHALL BE CONSIDERED SHIP WHEEL BEINGS UNLESS OTHERWISE SPECIFIED.
18. WITH RESPECT TO ANY RECORDING INSTRUMENTS WITHIN THIS PLAN, SURVEYOR HELD UPON TITLE GEORGETOWN TITLE COMPANY, DATED 8-1-98, C.T. NUMBER 980331844.
19. PRIVATE ACCESS IS HEREBY PROVIDED FROM STREET FRONTAGE WITH LESS THAN 20 FOOT SETBACKS.
20. NO DEVELOPMENT EXCEPT FOR TRAILS FOR TRACTS WHICH ARE LABELED OPEN SPACE.
21. O.R.M.C.T. INDICATES OFFICIAL RECORDS OF WILLIAMSON COUNTY, TEXAS.
22. W.C.P.M. INDICATES WILLIAMSON COUNTY PLAT RECORDS.
23. P.O.B. INDICATES POINT OF BEGINNING.



# AMENDED PLAT OF PLANNED UNIT DEVELOPMENT OF SUN CITY GEORGETOWN PHASE 2, NEIGHBORHOOD TEN

| SO. FT.   | ACRES  | DESCRIPTION        | PROPOSED ACREAGE AND USAGE |
|-----------|--------|--------------------|----------------------------|
| 288       | 0.006  | TRACT A            | OPEN SPACE AND D.E.        |
| 1,900     | 0.044  | TRACT B            | OPEN SPACE AND D.E.        |
| 817,160   | 14,168 | TRACT C            | OPEN SPACE AND D.E.        |
| 619,328   | 14,218 | SUBTOTAL TRACTS    |                            |
| 775,558   | 17,804 | STREET R.O.W.      |                            |
| 2,922,074 | 67,082 | SINGLE FAMILY LOTS |                            |
| 4,316,950 | 99,104 | TOTAL AREA         |                            |

RESIDENTIAL DENSITY IS 2.9 UNITS PER ACRE.

BEING A SUBDIVISION OF 99.104 ACRES IN THE  
 R. T. JENKINS SURVEY, ABSTRACT 360,  
 ISAAC JONES SURVEY, ABSTRACT 361,  
 ABNER SHORT SURVEY, ABSTRACT 598,  
 W. G. WILKINSON SURVEY, ABSTRACT 671  
 AND GEORGE THOMPSON SURVEY, ABSTRACT 792  
 WILLIAMSON COUNTY, TEXAS

292 LOTS    3 TRACTS    13 BLOCKS  
 OWNER:

DEL WEBB TEXAS LIMITED PARTNERSHIP  
 BY: DEL WEBB SOUTHWEST CO.  
 LARRY MICHELS, VICE PRESIDENT AND GENERAL MANAGER  
 5353 WILLIAMS DRIVE  
 GEORGETOWN, TEXAS 78628

**TurnerCollie & Braden Inc.**  
 ENGINEERS • PLANNERS • PROJECT MANAGERS

400 WEST 15TH STREET, SUITE 500  
 AUSTIN, TEXAS 78701  
 (512) - 472-4519  
 FAX (512) - 472-7519

JOB NO. 22-217558-128    SEPTEMBER, 1998    SHEET 1 OF 8

OWNER'S CERTIFICATION

STATE OF TEXAS
COUNTY OF WILLIAMSON
KNOW ALL BY THESE PRESENTS:
I, JERRY L. CONNELL, REGISTERED PROFESSIONAL LAND SURVEYOR...

STATE OF TEXAS

COUNTY OF WILLIAMSON

ENGINEER'S CERTIFICATION

I, SCOTT A. SWILEY, REGISTERED PROFESSIONAL ENGINEER IN THE STATE OF TEXAS...
DATE 10/20/98

COUNTY CLERK'S CERTIFICATION

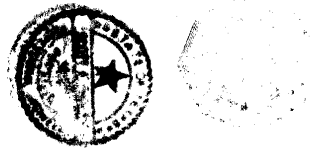
STATE OF TEXAS
COUNTY OF WILLIAMSON
KNOW ALL BY THESE PRESENTS:
I, NANCY RISTEN, CLERK OF THE COUNTY COURT OF SAID COUNTY...

TO CERTIFY WHICH, WITNESS MY HAND AND SEAL AT THE COUNTY COURT OF SAID COUNTY...

NANCY RISTEN, COUNTY CLERK
COUNTY OF WILLIAMSON COUNTY, TEXAS

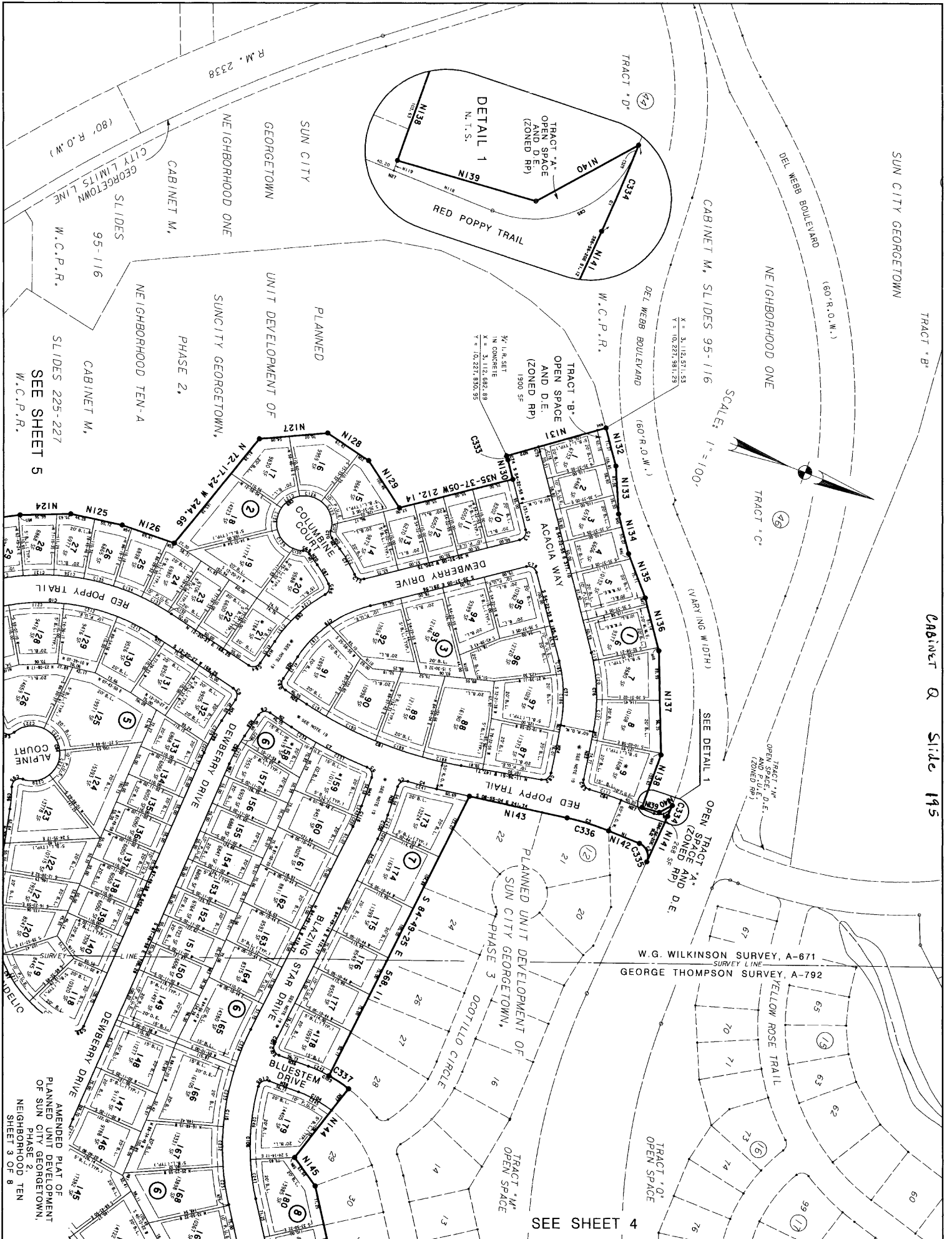


JAMES RUSSELL
Notary Public, State of Texas
Commission Expires March 16, 2001



THE STATE OF TEXAS, COUNTY OF WILLIAMSON, BEING PART OF THE 1998 AMENDED PLAT OF PLANNED UNIT DEVELOPMENT OF SUN CITY GEORGETOWN, PHASE 2, NEIGHBORHOOD TEN, THE FOLLOWING DESCRIBES THE BOUNDARY LINE OF SAID PLAT...

THE 30.00' x 100.00' AREA OF THE 1998 AMENDED PLAT OF PLANNED UNIT DEVELOPMENT OF SUN CITY GEORGETOWN, PHASE 2, NEIGHBORHOOD TEN, THE FOLLOWING DESCRIBES THE BOUNDARY LINE OF SAID PLAT...



SEE SHEET 5  
 SLIDES 225-227  
 CABINET M,  
 W.C.P.R.

SEE SHEET 4

W.G. WILKINSON SURVEY, A-671  
 SURVEY LINE  
 GEORGE THOMPSON SURVEY, A-792

AMENDED PLAT OF  
 PLANNED UNIT DEVELOPMENT  
 OF SUN CITY GEORGETOWN,  
 PHASE 2,  
 NEIGHBORHOOD TEN  
 SHEET 3 OF 8

SEE SHEET 3

TRACT "O"  
OPEN SPACE

GEORGE THOMPSON SURVEY, A-792  
SURVEY LINE  
ABNER SHORT SURVEY, A-598

PLANNED UNIT DEVELOPMENT OF  
SUN CITY GEORGETOWN,  
PHASE 3  
TRACT "R"  
OPEN SPACE

CABINET Q Slide 196

SUN CITY GEORGETOWN

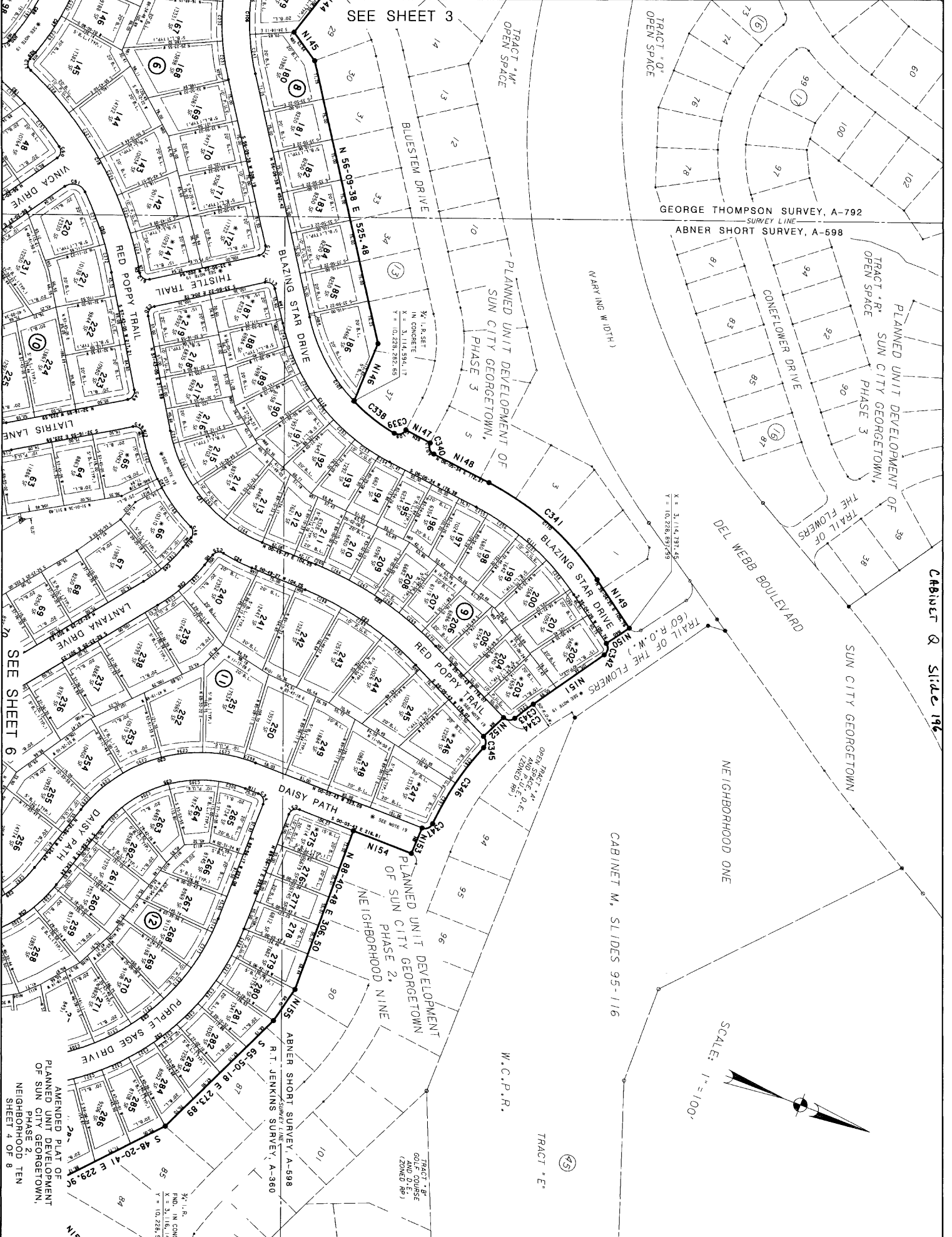
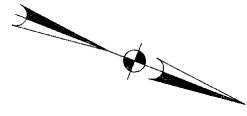
NEIGHBORHOOD ONE

CABINET M, SLIDES 95-116

W.C.P.R.

TRACT "E"

SCALE: 1" = 100'



SEE SHEET 6

AMENDED PLAT OF  
PLANNED UNIT DEVELOPMENT  
OF SUN CITY GEORGETOWN,  
NEIGHBORHOOD TWO  
SHEET 4 OF 8

ABNER SHORT SURVEY, A-598  
SUN CITY GEORGETOWN

TRACT "M"  
OPEN SPACE

TRACT "O"  
OPEN SPACE

TRACT "R"  
OPEN SPACE

TRACT "E"

TRACT "M"  
OPEN SPACE

TRACT "O"  
OPEN SPACE

TRACT "R"  
OPEN SPACE

TRACT "E"

TRACT "M"  
OPEN SPACE

TRACT "O"  
OPEN SPACE

TRACT "R"  
OPEN SPACE

TRACT "E"

TRACT "M"  
OPEN SPACE

TRACT "O"  
OPEN SPACE

TRACT "R"  
OPEN SPACE

TRACT "E"

TRACT "M"  
OPEN SPACE

TRACT "O"  
OPEN SPACE

TRACT "R"  
OPEN SPACE

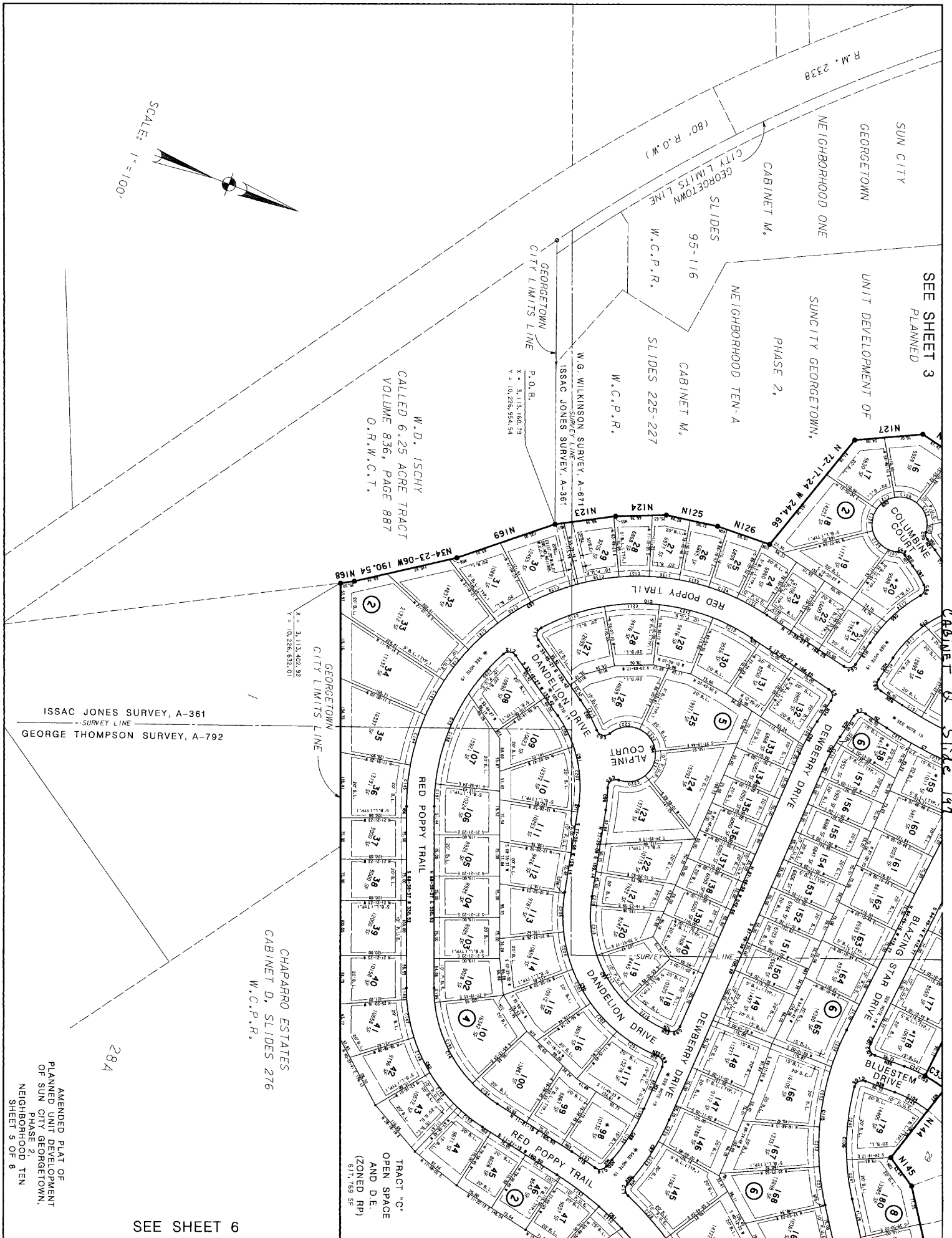
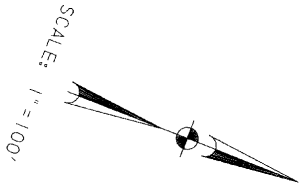
TRACT "E"

TRACT "M"  
OPEN SPACE

TRACT "O"  
OPEN SPACE

TRACT "R"  
OPEN SPACE

TRACT "E"



SEE SHEET 3  
PLANNED

UNIT DEVELOPMENT OF  
SUN CITY GEORGETOWN,  
PHASE 2,

NEIGHBORHOOD TEN-A

CABINET M,  
SLIDES 225-227

W.C.P.R.,  
SLIDES 95-116

W.C.P.R.,  
SLIDES 225-227

W.C.P.R.,  
SLIDES 225-227

W.G. WILKINSON SURVEY, A-67113  
ISSAC JONES SURVEY, A-361

P.O.B.  
SURVEY LINE  
X = 3, 113, 160, 79  
Y = 10, 228, 954, 54

W.D. ISCHY  
CALLED 6.25 ACRE TRACT  
VOLUME 836, PAGE 887  
O.R.W.C.T.

W.D. ISCHY  
CALLED 6.25 ACRE TRACT  
VOLUME 836, PAGE 887  
O.R.W.C.T.

W.D. ISCHY  
CALLED 6.25 ACRE TRACT  
VOLUME 836, PAGE 887  
O.R.W.C.T.

W.D. ISCHY  
CALLED 6.25 ACRE TRACT  
VOLUME 836, PAGE 887  
O.R.W.C.T.

W.D. ISCHY  
CALLED 6.25 ACRE TRACT  
VOLUME 836, PAGE 887  
O.R.W.C.T.

W.D. ISCHY  
CALLED 6.25 ACRE TRACT  
VOLUME 836, PAGE 887  
O.R.W.C.T.

W.D. ISCHY  
CALLED 6.25 ACRE TRACT  
VOLUME 836, PAGE 887  
O.R.W.C.T.

W.D. ISCHY  
CALLED 6.25 ACRE TRACT  
VOLUME 836, PAGE 887  
O.R.W.C.T.

W.D. ISCHY  
CALLED 6.25 ACRE TRACT  
VOLUME 836, PAGE 887  
O.R.W.C.T.

W.D. ISCHY  
CALLED 6.25 ACRE TRACT  
VOLUME 836, PAGE 887  
O.R.W.C.T.

CABINET M  
Slide 147

BLAZING STAR DRIVE

BLUESTEM DRIVE

DEMERRY DRIVE

DEMERRY DRIVE

DEMERRY DRIVE

DEMERRY DRIVE

DEMERRY DRIVE

DEMERRY DRIVE

DEMERRY DRIVE

DEMERRY DRIVE

DEMERRY DRIVE

DEMERRY DRIVE

DEMERRY DRIVE

DEMERRY DRIVE

DEMERRY DRIVE

DEMERRY DRIVE

DEMERRY DRIVE

DEMERRY DRIVE

DEMERRY DRIVE

CHAPARRO ESTATES  
CABINET D, SLIDES 276  
W.C.P.R.

CHAPARRO ESTATES  
CABINET D, SLIDES 276  
W.C.P.R.

CHAPARRO ESTATES  
CABINET D, SLIDES 276  
W.C.P.R.

CHAPARRO ESTATES  
CABINET D, SLIDES 276  
W.C.P.R.

CHAPARRO ESTATES  
CABINET D, SLIDES 276  
W.C.P.R.

CHAPARRO ESTATES  
CABINET D, SLIDES 276  
W.C.P.R.

CHAPARRO ESTATES  
CABINET D, SLIDES 276  
W.C.P.R.

CHAPARRO ESTATES  
CABINET D, SLIDES 276  
W.C.P.R.

CHAPARRO ESTATES  
CABINET D, SLIDES 276  
W.C.P.R.

CHAPARRO ESTATES  
CABINET D, SLIDES 276  
W.C.P.R.

CHAPARRO ESTATES  
CABINET D, SLIDES 276  
W.C.P.R.

CHAPARRO ESTATES  
CABINET D, SLIDES 276  
W.C.P.R.

CHAPARRO ESTATES  
CABINET D, SLIDES 276  
W.C.P.R.

CHAPARRO ESTATES  
CABINET D, SLIDES 276  
W.C.P.R.

CHAPARRO ESTATES  
CABINET D, SLIDES 276  
W.C.P.R.

CHAPARRO ESTATES  
CABINET D, SLIDES 276  
W.C.P.R.

CHAPARRO ESTATES  
CABINET D, SLIDES 276  
W.C.P.R.

CHAPARRO ESTATES  
CABINET D, SLIDES 276  
W.C.P.R.

CHAPARRO ESTATES  
CABINET D, SLIDES 276  
W.C.P.R.

TRACT "C"  
OPEN SPACE  
AND D.E.  
(ZONED RP)  
617,769 SF

TRACT "C"  
OPEN SPACE  
AND D.E.  
(ZONED RP)  
617,769 SF

TRACT "C"  
OPEN SPACE  
AND D.E.  
(ZONED RP)  
617,769 SF

TRACT "C"  
OPEN SPACE  
AND D.E.  
(ZONED RP)  
617,769 SF

TRACT "C"  
OPEN SPACE  
AND D.E.  
(ZONED RP)  
617,769 SF

TRACT "C"  
OPEN SPACE  
AND D.E.  
(ZONED RP)  
617,769 SF

TRACT "C"  
OPEN SPACE  
AND D.E.  
(ZONED RP)  
617,769 SF

TRACT "C"  
OPEN SPACE  
AND D.E.  
(ZONED RP)  
617,769 SF

TRACT "C"  
OPEN SPACE  
AND D.E.  
(ZONED RP)  
617,769 SF

TRACT "C"  
OPEN SPACE  
AND D.E.  
(ZONED RP)  
617,769 SF

TRACT "C"  
OPEN SPACE  
AND D.E.  
(ZONED RP)  
617,769 SF

TRACT "C"  
OPEN SPACE  
AND D.E.  
(ZONED RP)  
617,769 SF

TRACT "C"  
OPEN SPACE  
AND D.E.  
(ZONED RP)  
617,769 SF

TRACT "C"  
OPEN SPACE  
AND D.E.  
(ZONED RP)  
617,769 SF

TRACT "C"  
OPEN SPACE  
AND D.E.  
(ZONED RP)  
617,769 SF

TRACT "C"  
OPEN SPACE  
AND D.E.  
(ZONED RP)  
617,769 SF

TRACT "C"  
OPEN SPACE  
AND D.E.  
(ZONED RP)  
617,769 SF

TRACT "C"  
OPEN SPACE  
AND D.E.  
(ZONED RP)  
617,769 SF

TRACT "C"  
OPEN SPACE  
AND D.E.  
(ZONED RP)  
617,769 SF

SEE SHEET 6

284

AMENDED PLAT OF  
PLANNED UNIT DEVELOPMENT  
OF SUN CITY GEORGETOWN,  
PHASE 2,  
NEIGHBORHOOD TEN  
SHEET 5 OF 8

ISSAC JONES SURVEY, A-361  
SURVEY LINE  
GEORGE THOMPSON SURVEY, A-792

SEE SHEET 5

28B

TRACT "C"  
OPEN SPACE  
AND D.E.  
(ZONED RP)  
617,769 SF

GEORGE THOMPSON  
SURVEY, A-792  
SURVEY LINE  
ABNER SHORT  
SURVEY, A-598

S 68-38-37 W 3500.46

GEORGETOWN  
CITY LIMITS LINE

CHAPARRO ESTATES  
CABINET D, SLIDES 276  
W.C.P.R.

27

26A

25

24

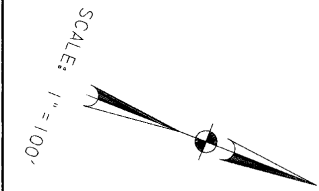
CHAPARRO ESTATES  
CABINET D, SLIDES 276  
W.C.P.R.

SEE SHEET 7

100-YEAR FLOOD PLAIN  
SEE NOTE 9

TRACT "C"  
OPEN SPACE  
AND D.E.  
(ZONED RP)  
617,769 SF

100-YEAR FLOOD PLAIN  
SEE NOTE 9



26B

26C

AMENDED PLAT OF  
PLANNED UNIT DEVELOPMENT  
OF SUN CITY GEORGETOWN,  
PHASE 2,  
NEIGHBORHOOD TEN  
SHEET 6 OF 8



SEE SHEET 4



