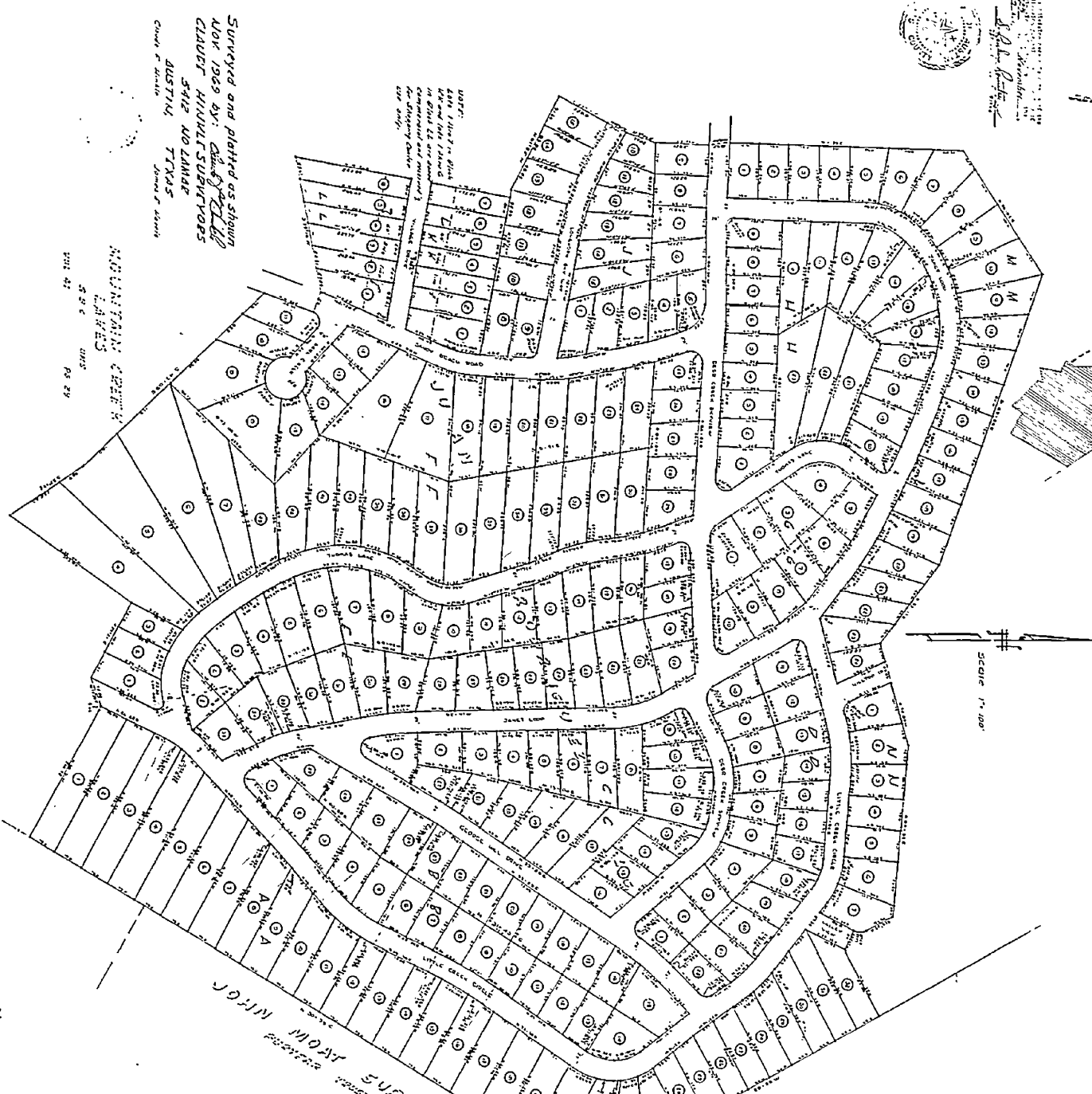
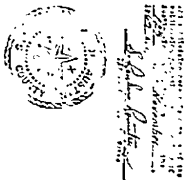


Nov. 12-69 Re-CA. B 4323 7.50

VALLEY LAKE HILLS SECTION ONE



Surveyed and platted as shown NOV 1969 by *Charles W. ...* CLAUD H. HULL, SUPERVISOR 5412 MO LAMAR AUSTIN, TEXAS



SCALE 1" = 200'

THE STATE OF TEXAS | FRED KEE, JR., CLERK OF TRAVIS COUNTY, TEXAS
I, *Charles W. ...* Surveyor, do hereby certify that the within and foregoing plat of Valley Lake Hills, Section One, Travis County, Texas, was duly laid out and platted in accordance with the laws of this State, and that the same is a true and correct copy of the original plat on file in the office of the County Clerk of Travis County, Texas, and that the same is a true and correct copy of the original plat on file in the office of the County Clerk of Travis County, Texas, and that the same is a true and correct copy of the original plat on file in the office of the County Clerk of Travis County, Texas.

IN WITNESS WHEREOF, I have hereunto set my hand and seal of office at Austin, Texas, this 12th day of November, 1969.
Charles W. ...
Surveyor

THE STATE OF TEXAS
COUNTY OF TRAVIS
I, *Charles W. ...* Surveyor, do hereby certify that the within and foregoing plat of Valley Lake Hills, Section One, Travis County, Texas, was duly laid out and platted in accordance with the laws of this State, and that the same is a true and correct copy of the original plat on file in the office of the County Clerk of Travis County, Texas, and that the same is a true and correct copy of the original plat on file in the office of the County Clerk of Travis County, Texas, and that the same is a true and correct copy of the original plat on file in the office of the County Clerk of Travis County, Texas.