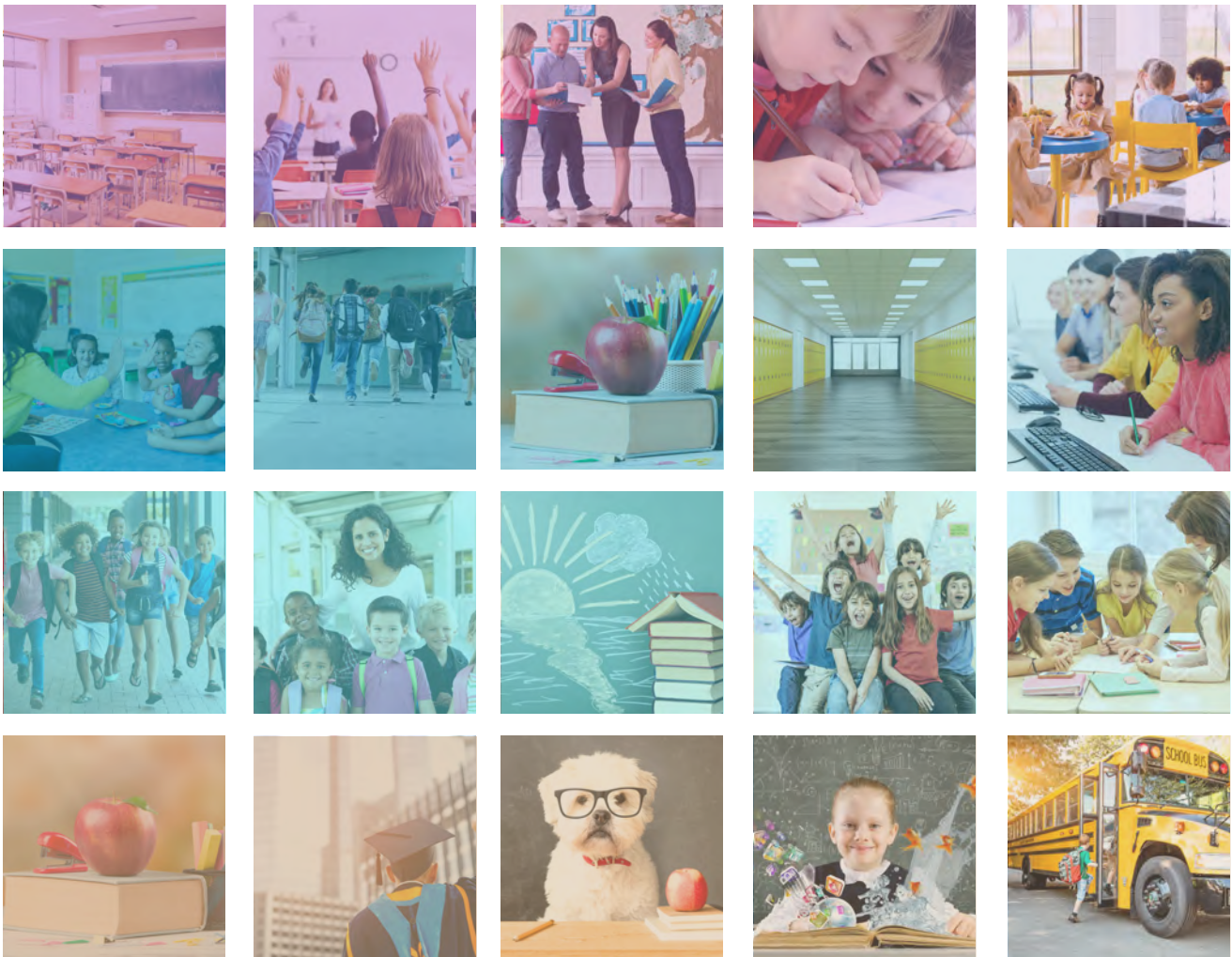




# School Guide

PUBLIC SCHOOLS & PRIVATE SCHOOLS



**Information contained herein is based on the 2023 Preliminary Ratings Release from the TEA website in April 2025.**

Texas' 15th Court of Appeals ruled that TEA can release 2023 Accountability Ratings reflecting performance data from the 2022-2023 school year in April 2025. Additional adjustments will be made to these ratings in August of 2025 after the appeals process has closed. Please refer to the Texas Education Agency website <https://tea.texas.gov/> for more information on the additional changes and framework for the future.

WWW.AUSTINTITLE.COM

This product is being provided as a general service to the community at large without the condition of the referral of title insurance business. Austin Title makes no express or implied warranty with respect to the information contained herein and accepts no liability for the consequences of any actions taken on the basis of said information.

# 2023 A-F Accountability Ratings Appeals Process and Timeline



The commissioner of education is required to provide a process for school districts (districts) and open enrollment charter schools (charter schools) to challenge an agency decision relating to an academic rating that affects the district or school, including a determination of consecutive school years of unacceptable performance ratings (Texas Education Code [TEC], §39.151).

District and charter schools' responsibility for data quality is the cornerstone of a fair and uniform rating determination. District and charter school appeals that challenge the agency's determination of the accountability rating and/or determination of consecutive school years of unacceptable performance ratings are carefully reviewed by an external panel. District superintendents and chief operating officers of charter schools may appeal accountability ratings by following the guidelines in this figure found in Chapter 97, Subchapter AA.

"Chapter 8 - Appealing the Ratings" of the Accountability Manual also provides additional details about the appeals process. The following is the timeline for 2023 A-F Accountability rating appeals. This has been announced in conjunction with the release of preliminary accountability ratings in TEA Login (TEAL).

Timeline	Appeals Process
----------	-----------------

**4/17/2025**  
Appeals Window Opens

**2023 Preliminary Ratings Release on TEA Login.** Appeals may be submitted by the superintendent or chief operating officer once ratings and year counts are released.

**4/17/2025 - 5/19/25**  
**(30 Days)**  
Appeals Window

Districts and charter schools register their intent to appeal using the TEAL Accountability application. Districts upload their appeal letter and supporting documentation in the TEAL Accountability application, send by mail, or hand-deliver. Appeals not signed by the district superintendent or chief operating officer of the charter school are denied.

**5/19/2025 at 5:00pm**  
**(Day 30)**  
Appeals Deadline

Appeals must be uploaded in the TEAL Accountability Appeals system, postmarked, or hand-delivered by 5pm no later than the date shared by TEA in conjunction with the preliminary ratings release into the TEAL Accountability application.

**8/19/2025**  
Decisions Released  
**(Day 90)**

Commissioner's decisions are provided in the form of response letters to each district and charter school that filed an appeal by the submission deadline. Letters are posted to the TEAL Accountability application.

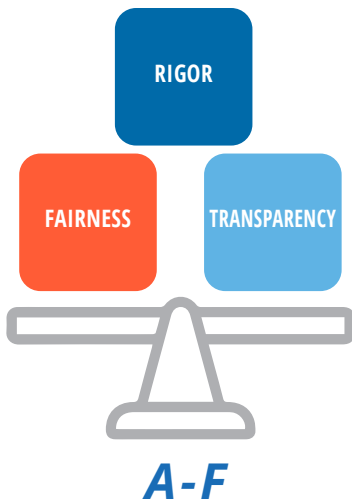
**8/19/2025**  
Performance Release  
**(Day 90)**

**2023 Final Ratings & Count of Consecutive Years of Unacceptable.** The outcomes of all appeals are reflected in the final ratings and year counts update. The TEAL and public websites are updated. Ratings and year counts are subject to change due to the results of an audit, compliance review, or investigation.

# Texas A-F Accountability

## A-F Refresh

In Fall 2023, Texas will complete the refresh of the A-F academic accountability ratings system that measures the performance of public school systems, including traditional ISDs and charters, along with individual campuses.



### A-F is Important for Texas Students

The A-F system was established by House Bill (HB) 22 in 2017 for the purpose of continuously improving student performance toward the goals of eliminating achievement gaps based on race, ethnicity, and socioeconomic status and ensuring the state is a national leader in preparing students for postsecondary success.

**RATINGS MATTER:** *You can't improve what you can't see.* A-F ratings provide parents, community members, and business leaders a window into how well a school is preparing students for the next grade level and success after high school. The refreshed A-F system will make adjustments to better reflect the three objectives of the system: rigor for students, fairness for districts and campuses, and transparency for parents and the public.

### RIGOR for students

39.053 (f) "eliminating achievement gaps... and to ensure this state is a national leader in preparing students for postsecondary success"

### TRANSPARENCY for the public

39.309 "website.. for the public to access school district and campus accountability information"

### FAIRNESS for schools

39.054 (b ) "The mathematical possibility that all districts and campuses receive an A rating"

*State law requires updates to standards to continuously improve student performance and ensure Texas is a national leader in preparing students for postsecondary success.*

**WHY MAKE CHANGES NOW:** After five years of the same criteria and a global pandemic, it is necessary to *refresh the A-F system to ensure Texas remains a national leader in preparing students for success after graduation.*

**HOW THE CHANGES ARE BEING DEVELOPED:** *TEA has engaged and sought input from thousands of interested individual Texans including parents, teachers, superintendents, school board members, legislative staff, community advocates, and business leaders, to inform the refresh and to understand how changes will affect school systems and better reflect growth for students.*

**2023 Ratings Will Be Different** Prior to 2017, accountability standards and cut points were raised each year. A-F maintained the same criteria which enabled apples-to-apples comparisons by updating the system less frequently. In the fall, TEA will release A-F accountability ratings and alongside the new 2023 ratings, will publicly release the 2022 "What If" ratings for easier comparisons to support continuous improvement plans moving forward.

### How we communicate results to the community

## How Assessment & Accountability Work Together

### EXPECTATIONS FOR STUDENTS

In order for students to be prepared for success after graduation, they must develop an increasingly complex set of knowledge and skills as they progress through school. In Texas, these are defined as the Texas Essential Knowledge and Skills (TEKS) and are approved by the State Board of Education. The State of Texas Assessment of Academic Readiness (STAAR) is designed to help parents, teachers and administrators know what knowledge and skill students have mastered and where they still have gaps.

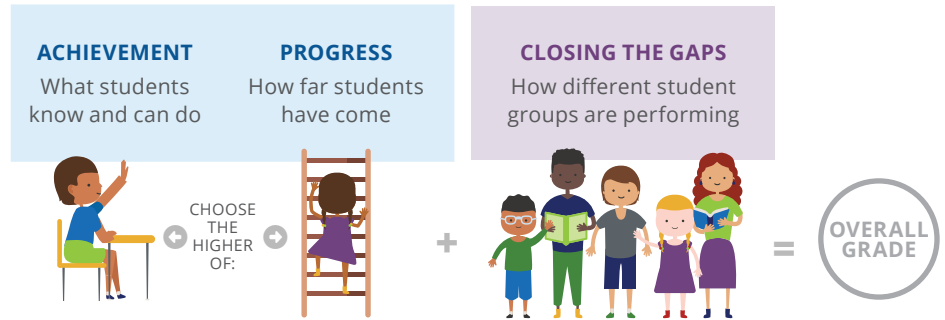


The TEKS include highly specific building blocks of knowledge and skills for each grade and subject.

### EXPECTATIONS FOR DISTRICTS AND SCHOOLS

School districts and campuses receive an annual performance rating from the Texas Education Agency, designed to take into account a variety of measures. Together, these measures give a broad picture of a school's or district's overall performance in helping students achieve academically.

## How the A-F System works



➔ **70%** of the grade comes from either their students' achievement within a single year, or their progress / student performance relative to schools with similar economic demographics.

➔ **30%** of the grade is based on their ability to close the gaps for students most in need.

**HOW THE RATINGS WORK: A-F Ratings are based on multiple, valid, objective measures of student achievement**, including state assessments; graduation rates; and college, career, and military readiness (CCMR) outcomes. Ratings are based on defined criteria, not a fixed distribution. The system provides fairness so that every school system and campus can earn an A [39.054 (b) "The mathematical possibility that all districts and campuses receive an A rating"]. In the A-F Refresh, ratings will continue to be fair for school systems allowing for schools to be graded on student achievement or student progress, whichever provides the higher grade.



### A-F Refresh

In 2017, the Legislature established the A-F system.

In 2023, A-F Refresh to ensure Texas remains a national leader in preparing students for success after graduation.

### How we communicate results to the community

➔ [TXschools.gov](https://www.txschools.gov)

### How parents view results for their students

➔ [TexasAssessment.gov](https://www.texasassessment.gov)

# Highlights of the 2023 Accountability System Ratings

## 2023 Ratings Release in April 2025

---

Texas' 15th Court of Appeals has ruled that TEA can release 2023 accountability ratings reflecting performance data from the 2022-2023 school year in April 2025.

## 2023 Accountability Framework

---

The final rule adopting the *2023 Accountability Manual* provides the framework and rules for the refreshed accountability system. The manual is the result of two years of stakeholder feedback, a posted framework in January 2023, and feedback collected from the proposed rule posted in May. The public comment period on the proposed rule opened on May 19, 2023, and closed June 20, 2023. In October 2023, the 2023 Accountability Manual was [announced](#).

### Overview of the 2023 Accountability System

The overall design of the accountability system evaluates performance according to three domains:

**Student Achievement** evaluates performance across all subjects for all students, on both general and alternate assessments, College, Career, and Military Readiness (CCMR) indicators, and graduation rates.

**School Progress** measures outcomes in two areas:

- Part A: Academic Growth
  - Percentage of students who grew at least one year academically as measured by STAAR results (Annual Growth).
  - Percentage of students who earned Did Not Meet Grade Level in the prior year and Approaches Grade Level or above in the current year (Accelerated Learning).
- Part B: Relative Performance
  - The achievement of students relative to campuses with similar economically disadvantaged percentages.
  - For AEA campuses, Part B: Retest Growth is the percentage of students who earned Approaches Grade Level or above on an EOC retest during the 2023 accountability cycle.

**Closing the Gaps** uses disaggregated data to demonstrate differentials in progress to interim and long-term goals among racial/ethnic groups, socioeconomic backgrounds, and other factors. The indicators included in this domain, as well as the domain's construction, align the state accountability system with the Elementary and Secondary Education Act (ESEA), as amended by the Every Student Succeeds Act (ESSA). In February 2023, the ESSA amendment was [announced](#).

## 2023 Accountability Reports (*Released April 2025*)

---

### State of Texas

More than five million students were enrolled in Texas public schools in the 2022–23 school year, and they took nearly nine million STAAR assessments in reading, mathematics, science, and social studies. Of all assessments taken, 76% met the Approaches Grade Level standard or above, 49% met the Meets Grade Level standard or above, and 20% met the Masters Grade Level standard. This represents an increase in Approaches+ (2 percentage points), an increase in Meets+ (1 percentage point), and a small decrease (3 percentage points) in Masters from 2022.

## Highlights of the 2023 Accountability System Ratings

Of the 367,802 2022 annual graduates evaluated for College, Career, and Military Readiness (CCMR) in accountability, 69% percent met the criteria for one or more indicators. This represents nearly 10,000 more evaluated annual graduates, with an increase of 4 percentage points in CCMR. Statewide, the 2022 4-year graduation rate for all students was slightly down from 90.0% to 89.7%.

### School Districts and Open-enrollment Charter schools (School Systems)

Of the 1,209 school systems in Texas, 1,198 were evaluated. 128 (10.4%) earned an A overall rating, 479 (40.2%) earned an B overall rating, 382 (32.8%) earned a C overall rating, 168 (13.9%) earned a D overall rating and 41(2.7%) earned an F overall rating.

2023 District Accountability Rating	Count	Percentage
A	128	10.4%
B	479	40.2%
C	382	32.8%
D	168	13.9%
F	41	2.7%
Not Rated	11	
<b>Totals</b>	<b>1,209</b>	

*2022 and 2023 cannot be compared side-by-side. The 2022 What If ratings were provided to systems to reference alongside 2023.*

### Campuses

Of the 9,044 campuses in Texas (including open-enrollment charter campuses, and including campuses evaluated under Alternative Education Accountability), 8,539 were evaluated. Of the campuses considered for ratings, 1,646 (19.3%) earned an A overall rating, 2,873 (33.6%) campuses earned a B overall rating, 2,107 (24.7%) earned a C overall rating, 1,264 (14.8%) campuses earned a D overall rating, 649 (7.6%) an F overall rating.

2023 Campus Accountability Rating	Count	Percentage
A	1,646	19.3%
B	2,873	33.6%
C	2,107	24.7%
D	1,264	14.8%
F	649	7.6%
Not Rated	505	
<b>Totals</b>	<b>9,044</b>	

*2022 and 2023 cannot be compared side-by-side. The 2022 What If ratings were provided to systems to reference alongside 2023.*



## AUSTIN ISD DISTRICT PROFILE

- **Superintendent:** Matias Segura
- **2022-23 total student enrollment:** 73,198
- **Total number of schools:** 122
- **Number of students per teacher:** 16.5
- **Number of full-time teachers:** 4,433
- **Average teachers salary:** \$58,510
- **Address:** 4000 South IH 35 Frontage Rd.  
Austin, TX 78704
- **Phone number:** 512-414-1700
- **Website:** austinisd.org

### OVERALL RATING

77 out of 100



### Student Achievement



78 out of 100

### Student Performance

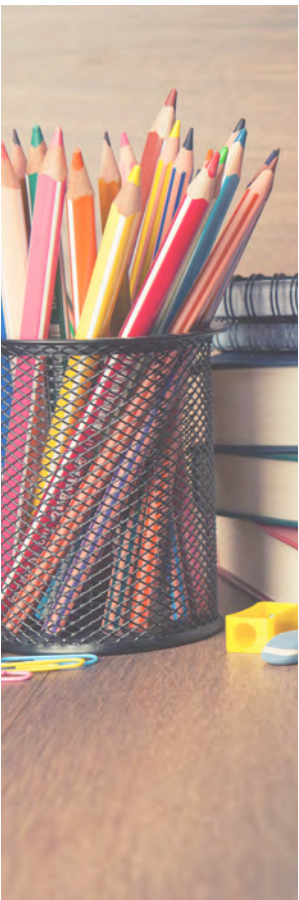


74 out of 100

### Closing the Gaps



73 out of 100



## BASTROP ISD DISTRICT PROFILE

- **Superintendent:** Barry Edwards
- **2022-23 total student enrollment:** 12,449
- **Total number of schools:** 14
- **Number of students per teacher:** 15.9
- **Number of full-time teachers:** 783
- **Average teachers salary:** \$56,432
- **Address:** 906 Farm Street, Bastrop, TX 78602
- **Phone number:** 512-772-7100
- **Website:** bisdtx.org

### OVERALL RATING

65 out of 100



### Student Achievement



67 out of 100

### Student Performance



69 out of 100

### Closing the Gaps



57 out of 100



## DEL VALLE ISD DISTRICT PROFILE

- **Superintendent:** Matthew Gutierrez
- **2022-23 total student enrollment:** 11,059
- **Total number of schools:** 14
- **Number of students per teacher:** 15
- **Number of full-time teachers:** 737
- **Average teachers salary:** \$61,057
- **Address:** 5301 Ross Road, Del Valle, TX 78617
- **Phone number:** 512-386-3010
- **Website:** dvisd.net

### OVERALL RATING

66 out of 100



### Student Achievement



64 out of 100

### Student Performance



67 out of 100

### Closing the Gaps



64 out of 100

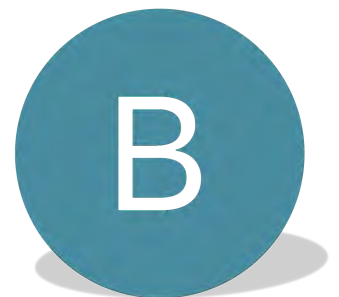


## DRIPPING SPRINGS ISD DISTRICT PROFILE

- **Superintendent:** Dr. Holly Morris-Kuentz
- **2022-23 total student enrollment:** 8,351
- **Total number of schools:** 8
- **Number of students per teacher:** 15.2
- **Number of full-time teachers:** 548
- **Average teachers salary:** \$58,739
- **Address:** 300 Sportsplex Dr.  
Dripping Springs, TX 78620
- **Phone number:** 512-858-3000
- **Website:** dsisdtx.us

### OVERALL RATING

89 out of 100



### Student Achievement



89 out of 100

### Student Performance



84 out of 100

### Closing the Gaps



88 out of 100



## EANES ISD DISTRICT PROFILE

- **Superintendent:** Jeff Arnett
- **2022-23 total student enrollment:** 7,720
- **Total number of schools:** 10
- **Number of students per teacher:** 12.7
- **Number of full-time teachers:** 608
- **Average teachers salary:** \$59,286
- **Address:** 601 Camp Craft Rd., Austin, TX 78746
- **Phone number:** 512-732-9000
- **Website:** eanesisd.net

### OVERALL RATING

94 out of 100



### Student Achievement



94 out of 100

### Student Performance



89 out of 100

### Closing the Gaps



94 out of 100

---

## ELGIN ISD DISTRICT PROFILE

- **Superintendent:** Jana Rueter
- **2022-23 total student enrollment:** 5,389
- **Total number of schools:** 7
- **Number of students per teacher:** 17.6
- **Number of full-time teachers:** 306
- **Average teachers salary:** \$56,673
- **Address:** 1002 N. Avenue C, Elgin, TX 78621
- **Phone number:** 512-281-3434
- **Website:** elginisd.net

### OVERALL RATING

65 out of 100



### Student Achievement



65 out of 100

### Student Performance



68 out of 100

### Closing the Gaps



57 out of 100





## GEORGETOWN ISD DISTRICT PROFILE

- **Superintendent:** Dr. Devin C. Padavil
- **2022-23 total student enrollment:** 13,063
- **Total number of schools:** 21
- **Number of students per teacher:** 13.8
- **Number of full-time teachers:** 949
- **Average teachers salary:** \$56,932
- **Address:** 507 E. University Ave.  
Georgetown, TX 78626
- **Phone number:** 512-943-5000
- **Website:** georgetownisd.org

### OVERALL RATING

75 out of 100



### Student Achievement



75 out of 100

### Student Performance



73 out of 100

### Closing the Gaps



74 out of 100

## HAYS CISD DISTRICT PROFILE

- **Superintendent:** Eric Wright
- **2022-23 total student enrollment:** 22,185
- **Total number of schools:** 26
- **Number of students per teacher:** 14.9
- **Number of full-time teachers:** 1,493
- **Average teachers salary:** \$62,532
- **Address:** 21003 Interstate 35, Kyle, TX 78640
- **Phone number:** 512-268-2141
- **Website:** hayscisd.net

### OVERALL RATING

80 out of 100



### Student Achievement



77 out of 100

### Student Performance



80 out of 100

### Closing the Gaps



79 out of 100





## HUTTO ISD DISTRICT PROFILE

- **Superintendent:** Jeni Neatherlin
- **2022-23 total student enrollment:** 9,598
- **Total number of schools:** 11
- **Number of students per teacher:** 14.8
- **Number of full-time teachers:** 646
- **Average teachers salary:** \$57,363
- **Address:** 200 College Street, Hutto, TX 78634
- **Phone number:** 512-759-3771
- **Website:** [hipponation.org](http://hipponation.org)

### OVERALL RATING

78 out of 100



### Student Achievement



77 out of 100

### Student Performance



76 out of 100

### Closing the Gaps



79 out of 100



## JARRELL ISD DISTRICT PROFILE

- **Superintendent:** Dr. Toni Hicks
- **2022-23 total student enrollment:** 3,350
- **Total number of schools:** 4
- **Number of students per teacher:** 14.4
- **Number of full-time teachers:** 233
- **Average teachers salary:** \$58,060
- **Address:** 504 N. 5<sup>th</sup> Street, Jarrell, TX 76537
- **Phone number:** 512-746-2124
- **Website:** [jarrellisd.org](http://jarrellisd.org)

### OVERALL RATING

74 out of 100



### Student Achievement



69 out of 100

### Student Performance



73 out of 100

### Closing the Gaps



77 out of 100



## LAGO VISTA ISD DISTRICT PROFILE

- **Superintendent:** Darren Webb
- **2022-23 total student enrollment:** 1,788
- **Total number of schools:** 4
- **Number of students per teacher:** 14.3
- **Number of full-time teachers:** 125
- **Average teachers salary:** \$57,653
- **Address:** 8039 Bar K Ranch Road  
Lago Vista, TX 78645
- **Phone number:** 512-267-8300
- **Website:** lagovistaisd.net

### OVERALL RATING

78 out of 100



### Student Achievement



81 out of 100

### Student Performance



69 out of 100

### Closing the Gaps



70 out of 100



## LAKE TRAVIS ISD DISTRICT PROFILE

- **Superintendent:** Paul Norton
- **2022-23 total student enrollment:** 11,358
- **Total number of schools:** 11
- **Number of students per teacher:** 16.6
- **Number of full-time teachers:** 684
- **Average teachers salary:** \$60,752
- **Address:** 3322 Ranch Road 620 S.  
Austin, TX 78738
- **Phone number:** 512-533-6000
- **Website:** ltidschools.org

### OVERALL RATING

89 out of 100



### Student Achievement



89 out of 100

### Student Performance



85 out of 100

### Closing the Gaps



90 out of 100



## LEANDER ISD DISTRICT PROFILE

- **Superintendent:** Bruce Gearing
- **2022-23 total student enrollment:** 42,320
- **Total number of schools:** 50
- **Number of students per teacher:** 14.2
- **Number of full-time teachers:** 2,988
- **Average teachers salary:** \$58,713
- **Address:** 204 W S Street, Leander, TX 78641
- **Phone number:** 512-570-0000
- **Website:** leanderisd.org

### OVERALL RATING

88 out of 100



### Student Achievement



88 out of 100

### Student Performance



82 out of 100

### Closing the Gaps



87 out of 100



## LIBERTY HILL ISD DISTRICT PROFILE

- **Superintendent:** Steven Snell
- **2022-23 total student enrollment:** 7,854
- **Total number of schools:** 10
- **Number of students per teacher:** 14.8
- **Number of full-time teachers:** 532
- **Average teachers salary:** \$56,957
- **Address:** 301 Forrest St., Liberty Hill, TX 78642
- **Phone number:** 512-260-5580
- **Website:** libertyhill.txed.net

### OVERALL RATING

85 out of 100



### Student Achievement



86 out of 100

### Student Performance



82 out of 100

### Closing the Gaps



84 out of 100



# MANOR ISD DISTRICT PROFILE

- **Superintendent:** Dr. Robert Sormani
- **2022-23 total student enrollment:** 9,227
- **Total number of schools:** 15
- **Number of students per teacher:** 14.8
- **Number of full-time teachers:** 621
- **Average teachers salary:** \$58,454
- **Address:** 10335 Hwy. 290 E., Manor, TX 78653
- **Phone number:** 512-278-4000
- **Website:** manorisd.org

## OVERALL RATING

65 out of 100



### Student Achievement



65 out of 100

### Student Performance



65 out of 100

### Closing the Gaps



66 out of 100



# PFLUGERVILLE ISD DISTRICT PROFILE

- **Superintendent:** Dr. Quintin Shepherd
- **2022-23 total student enrollment:** 25,419
- **Total number of schools:** 33
- **Number of students per teacher:** 14.1
- **Number of full-time teachers:** 1,800
- **Average teachers salary:** \$57,953
- **Address:** 1401 W. Pecan St., Pflugerville, TX 78660
- **Phone number:** 512-594-0000
- **Website:** pflugervilleisd.net

## OVERALL RATING

75 out of 100



### Student Achievement



76 out of 100

### Student Performance



75 out of 100

### Closing the Gaps



74 out of 100



## ROUND ROCK ISD DISTRICT PROFILE

- **Superintendent:** Hafedf Azaiez
- **2022-23 total student enrollment:** 46,349
- **Total number of schools:** 59
- **Number of students per teacher:** 14.4
- **Number of full-time teachers:** 3,221
- **Average teachers salary:** \$60,570
- **Address:** 1311 Round Rock Avenue  
Round Rock TX 78681
- **Phone number:** 512-464-5000
- **Website:** roundrockisd.org

### OVERALL RATING

87 out of 100

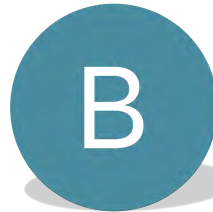


### Student Achievement



87 out of 100

### Student Performance



82 out of 100

### Closing the Gaps



86 out of 100



## SAN MARCOS CISD DISTRICT PROFILE

- **Superintendent:** Dr. Michael Cardona
- **2022-23 total student enrollment:** 8,430
- **Total number of schools:** 11
- **Number of students per teacher:** 14.4
- **Number of full-time teachers:** 584
- **Average teachers salary:** \$56,020
- **Address:** 631 Mill St., San Marcos, TX 78666
- **Phone number:** 512-393-6744
- **Website:** smcisd.net

### OVERALL RATING

64 out of 100



### Student Achievement



61 out of 100

### Student Performance



65 out of 100

### Closing the Gaps



60 out of 100



## SMITHVILLE ISD DISTRICT PROFILE

- **Superintendent:** Cheryl Burns
- **2022-23 total student enrollment:** 1,879
- **Total number of schools:** 4
- **Number of students per teacher:** 14.6
- **Number of full-time teachers:** 128
- **Average teachers salary:** \$53,865
- **Address:** 901 NE 6<sup>th</sup> St., Smithville, TX 78957
- **Phone number:** 512-237-2487
- **Website:** smithvilleisd.org

### OVERALL RATING

67 out of 100



### Student Achievement



71 out of 100

### Student Performance



71 out of 100

### Closing the Gaps



56 out of 100



## TAYLOR ISD DISTRICT PROFILE

- **Superintendent:** Jennifer Garcia Edwardsen
- **2022-23 total student enrollment:** 3,106
- **Total number of schools:** 8
- **Number of students per teacher:** 15.3
- **Number of full-time teachers:** 203
- **Average teachers salary:** \$56,502
- **Address:** 3101 N. Main St., Ste. 104  
Taylor, TX 76574
- **Phone number:** 512-365-1391
- **Website:** taylorisd.net

### OVERALL RATING

64 out of 100



### Student Achievement



64 out of 100

### Student Performance



66 out of 100

### Closing the Gaps



58 out of 100

# A few of the best in the Austin Area

# PRIVATE SCHOOLS



## ACE Academy

- Type: Gifted and Talented
- Grades served: pre-K-8
- Religious orientation: N/A
- Extracurricular activities: robotics, 3D printing, digital photography, athletics
- Enrollment: 60
- Tuition: \$19,250
- 2901 Shoal Creek Blvd., Austin
- [www.austingifted.com](http://www.austingifted.com)

## Austin Classical School

- Type: Classical-Christian hybrid
- Grades served: pre-K-12
- Religious orientation: Christian
- Extracurricular activities: athletics, yearbook
- Enrollment: 315
- Tuition: \$4,100-\$10,750
- 10500 Jollyville Road, Bldg. A, Austin
- [www.austinclassical.org](http://www.austinclassical.org)

## Austin Jewish Academy

- Type: Religious-based
- Grades served: K-8
- Religious orientation: Jewish
- Extracurricular activities: athletics, art, music
- Enrollment: 90
- Tuition: \$18,680
- 7300 Hart Lane, Austin
- [www.austinjewishacademy.org](http://www.austinjewishacademy.org)

## Cathedral School of Saint Mary

- Type: Catholic classical school
- Grades served: pre-K3-8
- Religious orientation: Catholic
- Extracurricular activities: athletics, choir, chess club
- Enrollment: 170
- Tuition: \$7,300 per year for first child, \$6,300 for second child, \$6,000 for each additional child
- 910 San Jacinto Blvd., Austin
- [www.smcschoolaustin.org](http://www.smcschoolaustin.org)

## The Girls' School of Austin

- Type: Traditional
- Grades served: K-8
- Religious orientation: secular/nonsectarian
- Extracurricular activities: N/A
- Enrollment: 150
- Tuition: \$20,000
- 2007 McCall Road, Austin
- [www.thegirlsschool.org](http://www.thegirlsschool.org)

## Griffin School

- Type: college preparatory
- Grades served: 9-12
- Religious orientation: None
- Extracurricular activities: athletics, theatre, music
- Enrollment: 160
- Tuition: \$21,475
- 5001 Evans Ave., Austin
- [www.griffinschool.org](http://www.griffinschool.org)

## Headwaters School

- Type: independent school with Montessori pre-K-5, International Baccalaureate Diploma Program for grades 11-12
- Grades served: pre-K-12
- Religious orientation: N/A
- Extracurricular activities: primary Spanish (for ages 3-6), after-school auxiliary programs, extended care, guided study, drama, Model United Nations, yearbook club, outdoor leadership, National Honor Society, athletics
- Enrollment: 525
- Tuition: \$14,700+
- Springs Campus (Montessori early childhood program for ages 18 months-6 years): 6305 Menchaca Road, Austin
- Creek Campus (Montessori elementary program for grades K-5): 9607 Brodie Lane, Austin
- River Campus (middle and high school programs for grades 6-12): 807 Rio Grande St., Austin
- [www.headwaters.org](http://www.headwaters.org)

## Huntington-Surrey Preparatory School

- Type: college preparatory
- Grades served: 9-12
- Religious orientation: N/A
- Extracurricular activities: after-school clubs, National Honor Society, Beta Club
- Enrollment: 30
- Tuition: \$17,095
- 4700 Grover Ave., Austin
- [www.huntingtonsurrey.org](http://www.huntingtonsurrey.org)



### Hyde Park Schools

- Type: Christian
- Grades served: pre-K-4-12
- Religious orientation: Christian
- Extracurricular activities: athletics, student council
- Enrollment: 770
- Tuition: \$14,799-\$23,191
- 3901 Speedway Blvd., Austin
- [www.hpaustin.org](http://www.hpaustin.org)

### Kirby Hall School

- Type: independent, non-faith-based
- Grades served: Pre-K age 4-grade 8
- Religious orientation: none
- Extracurricular activities: athletics, student council, dance, cooking
- Enrollment: 88
- Tuition: \$9,950-\$18,925
- 306 W. 29th St., Austin
- [www.kirbyhallschool.org](http://www.kirbyhallschool.org)

### Magellan International School

- Type: International Baccalaureate
- Grades served: pre-K age 3-grade 8
- Religious orientation: secular
- Extracurricular activities: after-school clubs, athletics
- Enrollment: 584
- Tuition: \$14,000-\$21,000
- K-8: 7501 N. Capital of Texas Hwy., Austin (starting in October)
- Preprimary: 7130 Chimney Corners, Austin

### Redeemer Lutheran School and Preschool

- Type: religion based
- Grades served: age 15 months-eighth grade
- Religious orientation: Lutheran
- Extracurricular activities: athletics, music, STEM, art, music, performing arts, library
- Enrollment: 550
- Tuition: \$9,500 (KBR-eighth grade); varies (preschool)
- 1500 W. Anderson Lane, Austin
- [www.redeemerschool.net](http://www.redeemerschool.net)

### San Juan Diego Catholic High School

- Type: traditional
- Grades served: 9-12
- Religious orientation: Catholic
- Extracurricular activities: corporate internship program, athletics, clubs
- Enrollment: 140-160
- Tuition: \$6,200
- 2512 S. First St., Austin
- <https://sjdchs.org>

### St. Andrew's Episcopal School

- Type: faith-based independent school
- Grades served: K-12
- Religious orientation: Episcopalian
- Extracurricular activities: athletics, music, student clubs, after-school classes
- Enrollment: 980
- Tuition: \$28,500-\$35,700
- K-8: 1112 W. 31st St., Austin
- 9-12: 5901 Southwest Parkway, Austin
- [www.sasaustin.org](http://www.sasaustin.org)

### St. Austin Catholic School

- Type: religion based
- Grades served: pre-K age 3-grade 8
- Religious orientation: Catholic
- Extracurricular activities: athletics, choir, band, drama
- Enrollment: 200
- Tuition: \$9,560-\$10,560
- 2026 Guadalupe St., Austin
- [www.staustinschool.org](http://www.staustinschool.org)

### St. Ignatius Martyr Catholic School

- Type: religion based
- Grades served: pre-K age 3-grade 8
- Religious orientation: Catholic
- Extracurricular activities: robotics, chess, Legos, dance, athletics, choir, drama, yearbook, altar serving, National Junior Honor Society, Private Schools Interscholastic Association, youth group
- Enrollment: 200
- Tuition: \$8,550-\$8,580
- 120 W. Oltorf St., Austin

### St. Louis King of France Catholic School

- Type: Montessori
- Grades served: pre-K age 4-grade 8
- Religious orientation: Catholic
- Extracurricular activities: music, student council, athletics
- Enrollment: 300
- Tuition: \$8,596
- 2114 St. Joseph Blvd., Austin
- [www.slcsautin.org](http://www.slcsautin.org)

### St. Theresa Catholic School

- Type: Catholic
- Grades served: pre-K age 3-grade 8
- Religious orientation: Catholic
- Extracurricular activities: athletics
- Enrollment: 370
- Tuition: \$5,160-\$12,000
- 4311 Small Drive, Austin
- <https://st-theresa.org/school>







PROUDLY SERVING OUR COMMUNITY

Since 1953 ATX  
\*\*\*

***We Have the Resources  
to Help You  
Stand Out From the Crowd***



**TO SEE A LIST OF  
OUR BRANCH LOCATIONS  
& COMPANY ROSTER**



**TO SEE A LIST OF OUR  
REALTOR/CONSUMER  
RESOURCES PLUS ONLINE  
FLIPBOOKS**



[www.austintitle.com](http://www.austintitle.com)

This product is being provided as a general service to the community at large without the condition of the referral of title insurance business. Austin Title makes no express or implied warranty with respect to the information contained herein and accepts no liability for the consequences of any actions taken on the basis of said information.