



GROW GREEN TO HELP THE ENVIRONMENT & SAVE MONEY

The City of Austin offers a variety of rebates, grants and free landscaping items to help you create your earth-wise garden. Items listed have varying eligibilities, one-time limits, and pre-approvals so be sure to review details to make sure you qualify.

Rebates, Free Stuff & Grants

RESIDENTIAL GRANTS

Urban Forest up to \$58,000 of funding for projects that show a clear benefit to Austin's urban forest. For Austin residential sites, all projects must be within 15 feet of public property which includes streets.

RESIDENTIAL REBATES

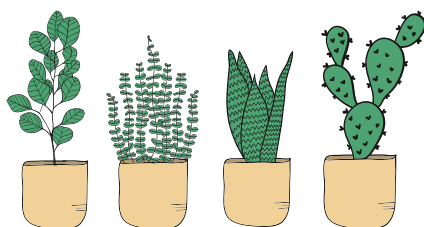
- WaterWise Rainscape up to \$500 per property for landscape features to keep rainwater on the land.
- Rainwater Harvesting, up to \$5,000 to install rainwater harvesting systems to capture rainwater.
- WaterWise Landscape up to \$1750 to help residents convert turf-grass to native and adapted plant beds.
- Landscape Survival Tools up to \$120 for compost, mulch, and core aeration service.
- Home Composting Program up to \$75 rebate on a home composting system OR up to \$75 on a chicken coop through the Chicken Keeping Rebate Program.
- Irrigation Upgrade up to \$400 rebate to help with costs to improve irrigation system efficiency.
- Pressure Regulating Valve (PRV), up to \$100 to help purchase a pressure regulating valve to reduce water pressure in your house.
- Watering Timer - 50% off the before tax purchase price up to \$40 for up to two watering timers to give residential customers more control over hose-end watering.

FREE STUFF

- Mulch pick up free mulch made from curbside yard trimmings.
- Design stencil request a design stencil when you order Grow Green Design Templates.
- Soil Moisture Meter measures the moisture of your soil to help you know when it's time to add water (available in ladybug or frog design) - free and available for pick up Mon. - Fri., 8:00 a.m. - 4:30 p.m., at 625 E. 10th Street, 6th floor. Limit one item per residential customer.
- Irrigation Evaluation Instructions and Template - do it yourself irrigation evaluation.
- Free Irrigation System Evaluations - check your eligibility for a free irrigation system evaluation.
- Irrigation Runtime Calculator

Items available through check-out at the Austin Public Library

- Water Saver Hose Meter monitor and control water use with a digital meter attachment for garden hoses and hose-end sprinklers.
- Sunlight Calculator measure the amount of light each area of your yard receives, then use the plant guide to select plants that best fit the light conditions.



MULTI-FAMILY AND HOMEOWNER ASSOCIATIONS

Rebates

- Irrigation System Improvement Rebate up to \$5000 maximum per property to increase irrigation efficiency.
- Pressure Regulating Valve (PRV) up to \$500 per property for a pressure regulating valve to reduce water pressure in each unit and the irrigation system.
- Rainwater Harvesting up to \$5,000 to install rainwater harvesting systems to capture rainwater
- WaterWise Landscape up to \$5,000 to multi-family homeowner associations to convert turf-grass to native and adapted plant beds.

SCHOOL GRANTS

- Bright Green Futures Grant up to \$3,000 for school-based sustainability projects including, rainscapes, rainwater harvesting, composting systems, habitat gardens, and more.
- Urban Forest up to \$58,000 of funding for projects that show a clear benefit to Austin's urban forest.

SCHOOL REBATE

- WaterWise Rainscape up to \$500 per property for landscape features to keep rainwater on the land.

COMMUNITY GROUPS GRANTS

- Urban Forest up to \$58,000 of funding for projects that show a clear benefit to Austin's urban forest.
- Neighborhood Partnering Program (NPP) provides opportunities for community and neighborhood organizations to affect public improvements by sharing in the costs of those efforts with the City of Austin government. NPP includes cost share, grant assistance and Adopt-a-Median programs.

RAIN GARDENS KEEPING WATER ON THE LAND

A rain garden is a low area that absorbs and filters rain water runoff coming from roofs, sidewalks, and driveways. Rain runs off the hard surfaces, collects in the shallow depression, and slowly soaks into the soil. They are usually planted with colorful native plants and grasses.

Why?

- **Conserves Water** - Rain water helps plants grow and reduces the need for watering.
- **Protects Water Quality** - Plants help filter pollutants like: chemicals from the roofing tile, fertilizer, and litter.
- **Reduce Flooding and Erosion** - Runoff collects in the low area and soaks into the soil instead of rapidly away.

CREATE A RAIN GARDEN IN SIX STEPS

- Find the right location - Observe the flow of water from rooftops, driveways or other hard surfaces and place the rain garden where this water collects. Calculate the slope of your lawn. The slope should be less than 10%. If possible, pick a spot in full to partial sun. Shady locations will still work, but the options for flowering plants are more limited in the shade.
- Test the soil - When soil is saturated (after you've irrigated or it has rained,) dig a hole 6" in diameter and no more than 12" deep in the area you'd like to put the rain garden. (Ideally, you want to be sure there is at least 12" of soil above bedrock). Insert a ruler and fill the hole with water up to the 6" mark. Time how long it takes the water to be absorbed into the ground. The water should absorb in less than 24 hours. If there is still water in the hole after 24 hours, then the site is not suitable for a rain garden. If your soil meets the infiltration test requirements, then you are ready to build the garden!
- Calculate the size and shape of your garden - Locate the roof area or other surfaces that will contribute runoff to your rain garden. Once you have estimated the length and width, multiply the two measurements to get the area in square feet.
- Rain garden construction - Once you feel confident your garden is well-placed, lay out the shape. If the yard is fairly level, dig out the garden to a depth of 6". Slope the sides of the rain garden using a shovel. Level the top border of the basin. You can use the top of the existing lawn, an earthen berm or landscaping material (like stone or timber). Loosen the soil in the bottom of the rain garden to a depth of 3". Cover the soil with compost so the soil is ready for planting.
- Plant Selection and Installation - Select plants that have a well-established root system and are drought resistant. Trees and shrubs are encouraged. Apply mulch to retain moisture.
- Maintenance - Water, weed and fertilize.

For a full set of directions visit growgreen.org